

## Bickerton Road, N19

£425,000

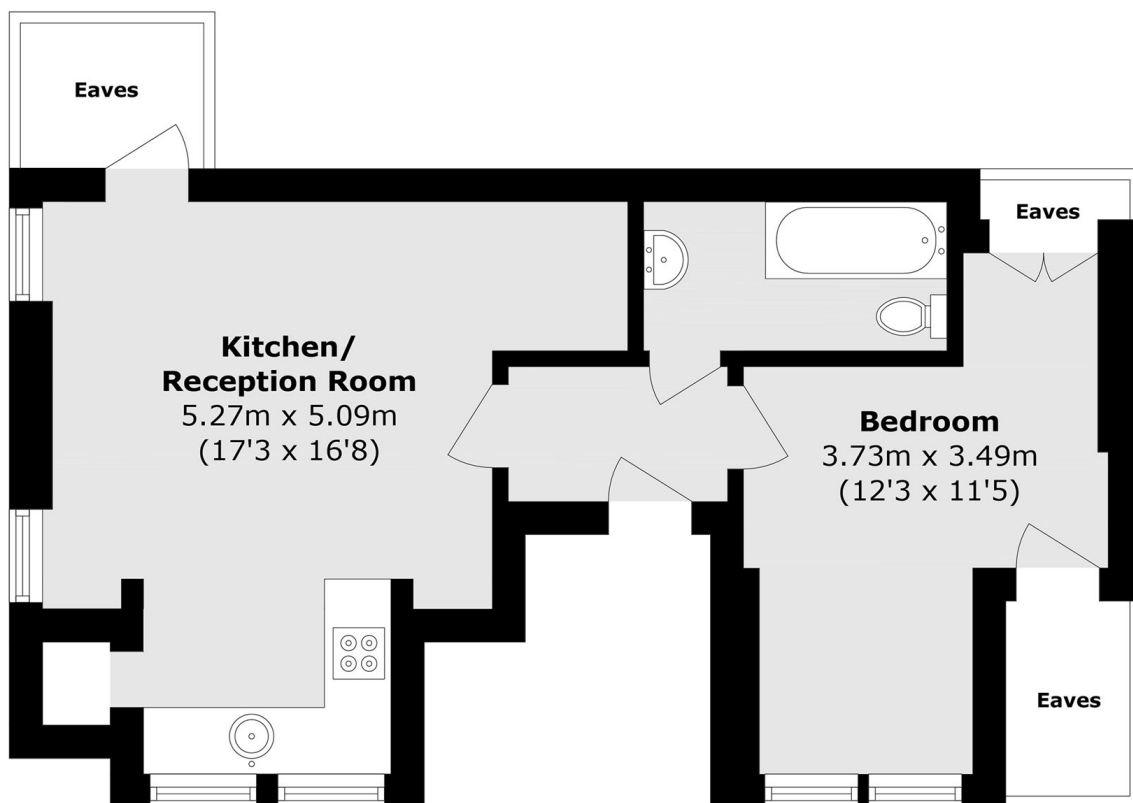
A charming one bedroom flat set on the top floor of a Victorian conversion. This flat features a bright and generous open plan reception room/kitchen, a separate bathroom and is offered chain free.

Bickerton Road is in a key position with a pleasant walk to Waterlow Park and the charming street cafés of Swains Lane just beyond, along with easy access to both Archway and Tufnell Park tube stations.

### Features

- Victorian Conversion
- One Double Bedroom
- Share of Freehold
- Great Transport Links
- Open Plan Kitchen
- Chain Free

# Bickerton Road, London, N19



Total area (approx.): 38.3 sq. m (412.2 sq. ft)  
(Excluding Eaves)