



HOMES BY VICTORIA
ESTATE AGENCY

Stoneleigh Close, Oakenshaw South, Redditch, B98 7YW

Offers Over £250,000

2 1 2



A beautifully presented two-bedroom semi-detached home, ideally positioned in the ever-popular Oakenshaw South. Perfect for first-time buyers, downsizers, or young families, this attractive property enjoys close proximity to local amenities, scenic woodland walks, and well-regarded schools.

homesbyvictoria.co.uk

victoria@homesbyvictoria | 07833 136521

FOR M HOMES MIDLANDS LIMITED trading as Homes By Victoria Company Number: 13688840 VAT no: 470190115



HOMES BY VICTORIA
ESTATE AGENCY

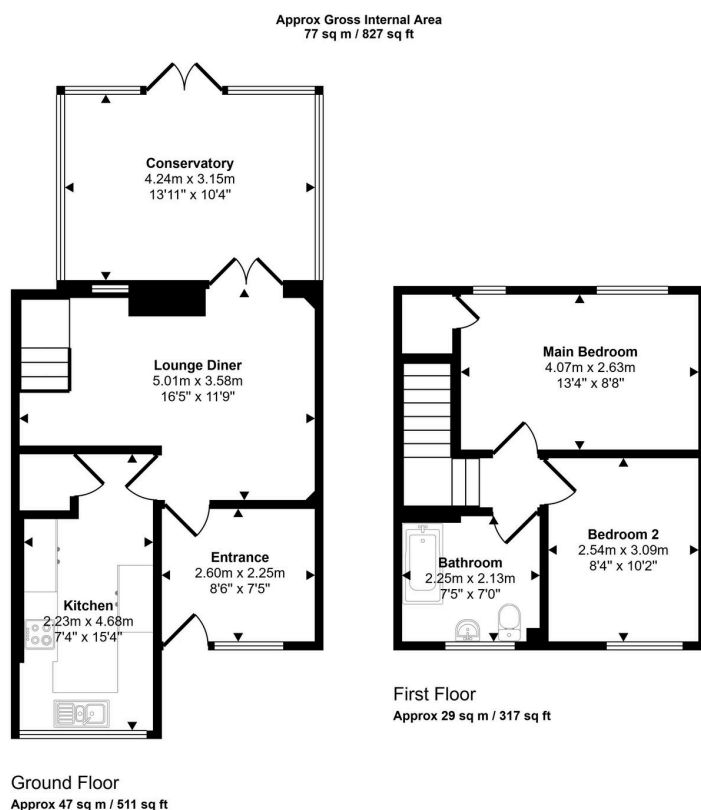


HOMES BY VICTORIA

ESTATE AGENCY

Key Features

- LOCATED IN THE POPULAR OAKENSHAW SOUTH AREA
- UPGRADED AND MODERN THROUGHOUT
- KITCHEN, LOUNGE AND CONSERVATORY
- MODERN FAMILY BATHROOM
- OFF ROAD PARKING AND EV CHARGER
- IDEAL FIRST TIME BUYERS HOME
- ENTRANCE HALLWAY / UTILITY AREA
- TWO DOUBLE BEDROOMS
- GENEROUS SIZED REAR GARDEN
- COUNCIL TAX BAND B & EPC RATING C



This floorplan is only for illustrative purposes and is not to scale. Measurements of rooms, doors, windows, and any items are approximate and no responsibility is taken for any error, omission or mis-statement. Icons of items such as bathroom suites are representations only and may not look like the real items. Made with Made Snappy 360.

