



Connells

Tivdale Road
Tivdale OLDBURY



Property Description

This superbly located three-bedroom detached residence is quietly positioned on Tividale Road in the highly sought-after area of Oldbury. Offering exceptional family living space, the property has been thoughtfully upgraded to combine modern comfort with stylish design. Ideal for families seeking a combination of practicality and elegance, the home is move-in ready with versatile, well-proportioned accommodation

To the ground floor there is a modern fitted kitchen with ample work top space. This then follows through to the dining area, perfect for entertaining. There is also a large reception rooms with doors facing the garden. The stairs in the hall lead to the first floor which comprises of three well-proportioned bedrooms with a family bathroom.

To the front of the property is a driveway for multiple cars along side a garage. There is also a family garden perfect for enjoying those summer months.

Call the sales team TODAY on 0121-552-2671 to arrange your viewing!

Lounge

16' 10" max x 13' 9" (5.13m max x 4.19m)
Double doors to rear and wall mounted radiator.

W.C

Wash hand basin, low level WC and double glazed window.

Dining Room

12' 10" plus bay x 11' 7" max (3.91m plus bay x 3.53m max)
Double glazed bay window to front and wall mounted radiator.

Kitchen

12' 9" plus bay x 12' 10" max (3.89m plus bay x 3.91m max)
Wall and base units, double glazed bay window to front. integrated oven and gas hob, sink/drainer integrated into work surface with doors leading to the garden.

Landing

Airing cupboard and doors leading to various rooms:

Bedroom One

12' 11" max x 11' 9" max (3.94m max x 3.58m max)
Two double glazed window and wall mounted radiator.

Bedroom Two

13' 9" x 9' 11" plus recess (4.19m x 3.02m plus recess)
Double gazed window to side and wall mounted radiator.

Bedroom Three

10' 1" x 7' 7" (3.07m x 2.31m)

Double glazed window to rear and wall mounted radiator.

Bathroom

Bath, shower, wash hand basin, low level WC, Wall mounted radiator, heated towel rail and double glazed window.

Rear Garden

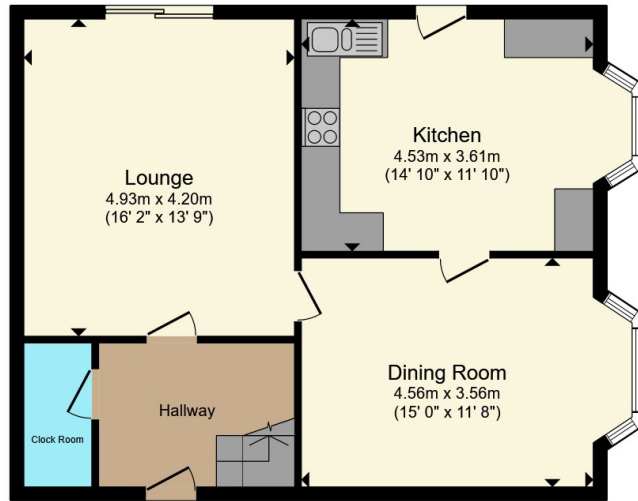
Garage

Electric shuttled with power & lighting.

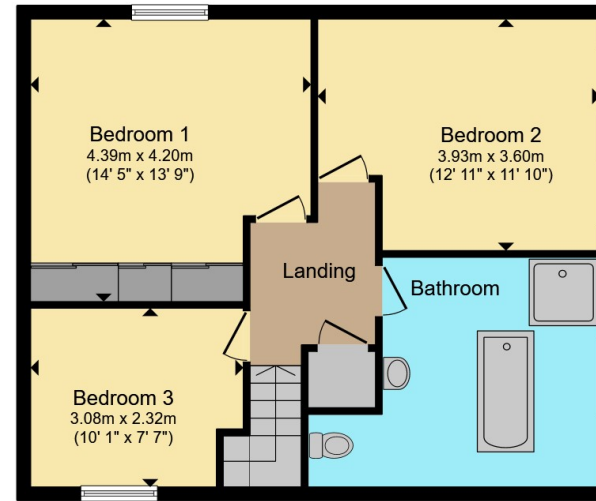








Ground Floor



First Floor

Total floor area 130.3 m² (1,403 sq.ft.) approx

This floor plan is for illustrative purposes only. It is not drawn to scale. Any measurements, floor areas (including any total floor area), openings and orientation are approximate. No details are guaranteed, they cannot be relied upon for any purpose and they do not form part of any agreement. No liability is taken for any error, omission or misstatement. A party must rely upon its own inspection(s). Powered by www.propertybox.io

Connells

To view this property please contact Connells on

T 0121 552 2671
E oldbury@connells.co.uk

70-76 Birmingham Street
OLDBURY B69 4EB

EPC Rating: C Council Tax
Band: B

Tenure: Freehold

view this property online connells.co.uk/Property/OLD313003



1. MONEY LAUNDERING REGULATIONS Intending purchasers will be asked to produce identification documentation at a later stage and we would ask for your co-operation in order that there will be no delay in agreeing the sale. 2. These particulars do not constitute part or all of an offer or contract. 3. The measurements indicated are supplied for guidance only and as such must be considered incorrect. Potential buyers are advised to recheck measurements before committing to any expense. 4. We have not tested any apparatus, equipment, fixtures, fittings or services and it is in the buyers interest to check the working condition of any appliances.

Connells Residential is registered in England and Wales under company number 1489613, Registered Office is Cumbria House, 16-20 Hockliffe Street, Leighton Buzzard, Bedfordshire, LU7 1GN. VAT Registration Number is 500 2481 05.

See all our properties at www.connells.co.uk | www.rightmove.co.uk | www.zoopla.co.uk

Property Ref: OLD313003 - 0005