



Durlston House, Durlston House Old Malthouse,
High Street
Lalington, Wareham | Dorset | BH19 3HA

FINE & COUNTRY



The Old Malthouse is a historic landmark building, being converted into a selection of traditional, new build properties in the heart of Langton Matravers.

DURLSTON HOUSE

Durlston House – Exceptional family living with stunning Purbeck views.

Occupying a prime corner position within The Old Malthouse development, Durlston House combines contemporary interiors with traditional Purbeck Stone exteriors and uninterrupted vistas towards the coastline and Purbeck Cliffs.

The ground floor is designed for practical, stylish living, featuring a large entrance hall, generous storage and a spacious WC. At the heart of the home lies a bright, open-plan kitchen/dining area with sliding patio doors opening onto the corner plot garden, creating an effortless connection between indoor and outdoor spaces. Adjacent, a spacious living room also benefits from patio doors leading directly to the garden, providing a perfect space for entertaining and family life.

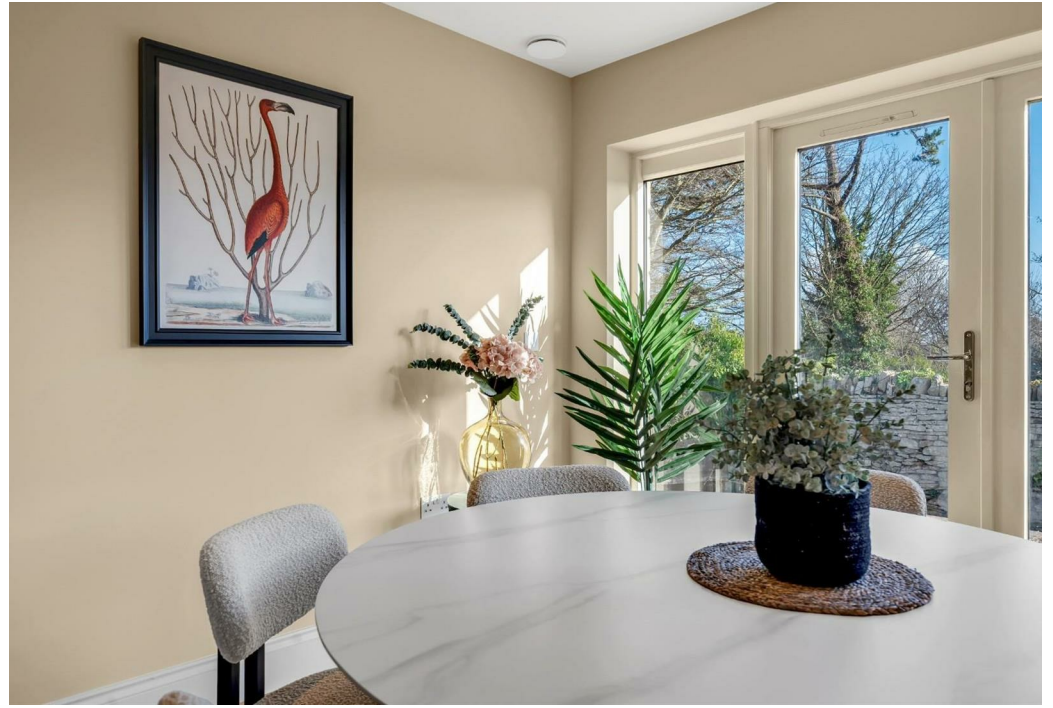
Upstairs, the property offers three generous double bedrooms, including a primary bedroom with ensuite and spectacular views across the Purbeck Cliffs. A contemporary family bathroom and additional storage complete the upper level, providing both practicality and comfort for modern family living.

Externally, Durlston House enjoys a corner plot wrap-around garden, ideal for outdoor entertaining, play, or simply enjoying the coastal surroundings. The property also benefits from allocated off-road parking, adding both convenience and security for residents.

Combining light-filled, well-proportioned rooms, traditional craftsmanship, and modern finishes, Durlston House is an outstanding family home or luxurious holiday retreat in one of Langton Matravers' most sought-after locations.







KEY FEATURES

- Prime Corner Plot with Panoramic Views Towards the Purbeck Cliffs
- Traditional Purbeck Stone Exterior Paired with Contemporary Interiors
- Spacious Open-plan Kitchen/Dining Area with Sliding Patio Doors to Garden
- Generous Living Room with Direct Access to Garden
- Large Entrance Hall With Ample Storage and Ground-Floor WC
- Three Double Bedrooms
- Primary Bedroom with Ensuite and Spectacular Coastal Views
- Contemporary Family Bathroom plus Additional Upstairs Storage
- Generous Garden Ideal For Outdoor Living and Entertaining
- Allocated Off-road Parking Within This Prestigious Village Development

The Old Malthouse, historically 'The Maltings' (a malthouse for local brewing) with its own pub onsite, thereafter becoming the prep school for the village, is now being converted into a selection of converted dwellings blended seamlessly in with new build properties in the traditional style of Purbeck Stone. The development in its entirety comprises a selection of three Cottages, seven new build Apartments/Maisonettes and nine new Detached properties will compliment new building with the existing seamlessly.

Traditional Purbeck stone exteriors, stylish country interiors with eco-friendly credentials and specifications will endure the future of these properties. Spacious, light rooms, elegant kitchens and bathrooms, off-road allocated parking and enclosed rear gardens will provide comfortable family homes in a sought-after location for both residential and holiday use.







Durlston House



GROUND FLOOR



FIRST FLOOR



FINE & COUNTRY





FINE & COUNTRY

Fine & Country South Dorset
173 Bridport Road, Poundbury, Dorset, DT1 3AH
Tel: +44 (0)1305 238839
southdorset@fineandcountry.com | fineandcountry.com

*Hull Gregson Hull Ltd. Registered in England and Wales. Company Reg. No. 10486229.
Registered office address: Leanne House East Wing Ground Avon Close, Granby Industrial Estate, Weymouth, England, DT4 9UX*