



## Fulham Road, SW6

£600,000

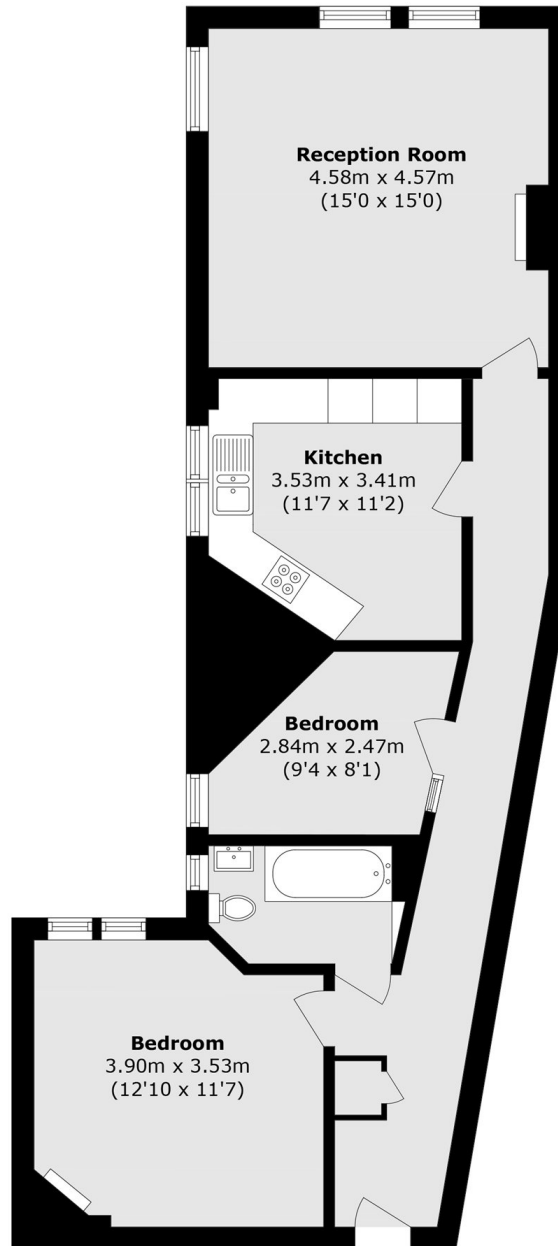
Set within an attractive red-brick mansion block, this bright and spacious first-floor two-bedroom apartment beautifully combines elegant period charm with high-quality modern finishes. The property features a generous front reception room with parquet flooring, high ceilings, and stunning original character features, alongside a separate fully integrated eat-in kitchen. Finished to an exceptional standard throughout, the apartment offers stylish, comfortable living in a timeless setting.

King Edward Mansions is enviably located between Parsons Green and Fulham Broadway, benefitting from an excellent range of amenities and transport links. The property is also ideally positioned to enjoy a variety of shops, restaurants, bars, and boutiques right on its doorstep.

### Features

- Red Brick Mansion Block
- Dual Aspect Reception Room
- Communal Courtyard
- Sold Chain Free
- Two Bedrooms
- Lateral First Floor Apartment

# Fulham Road, London, SW6



Total area (approx.): 76.5 sq. m (823.4 sq. ft)