



Albemarle Street, W1S

£750 Per week

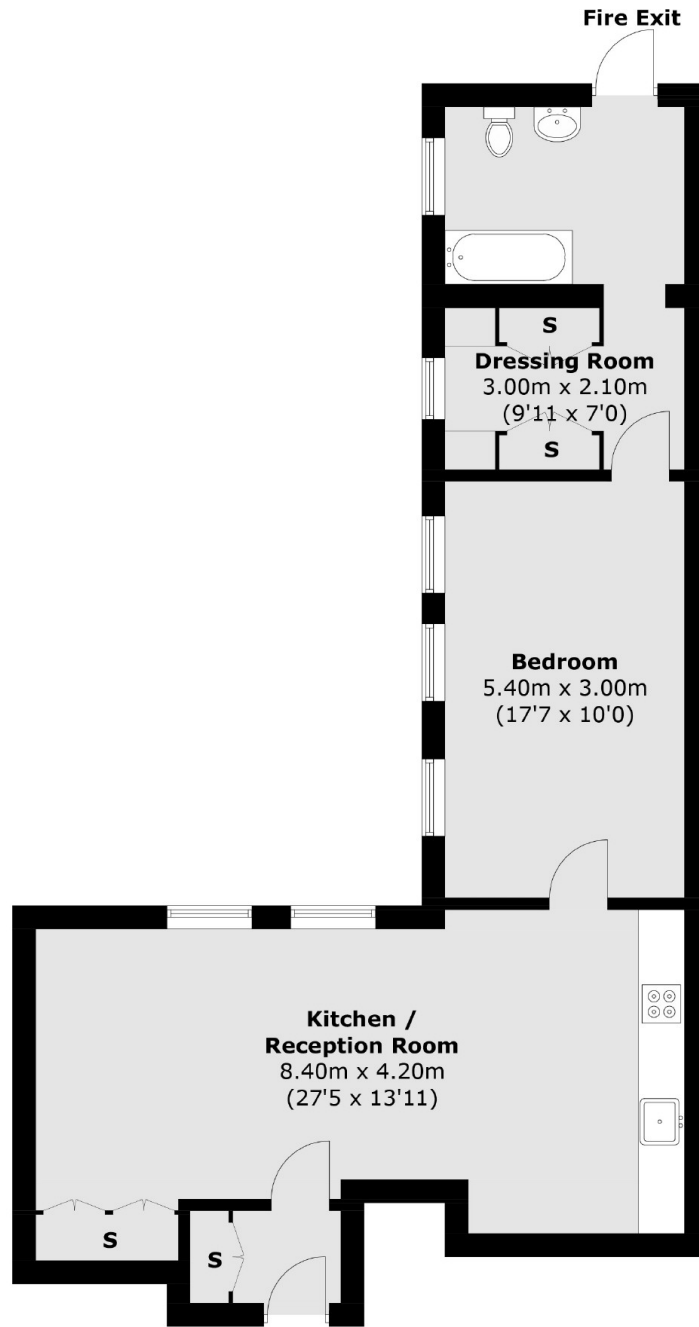
A contemporary apartment situated in an impressive Georgian building in the heart of Mayfair close to Green Park.

Albemarle Street is ideally located for Green Park tube station on the Piccadilly, Victoria and Jubilee lines. Piccadilly Circus and the amenities and attractions of the West End are close by.

Features

- Spacious Double Bedroom
- Lutron Lighting
- Wooden Flooring
- Fully Furnished
- Great Storage
- Excellent Location

Albemarle Street, London, W1S



Fourth Floor