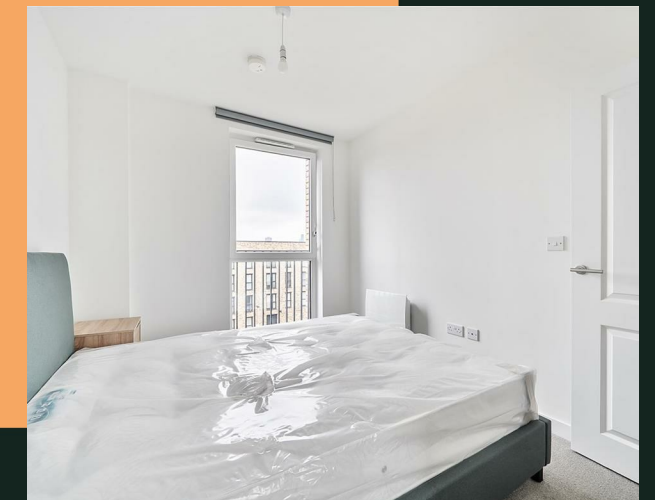
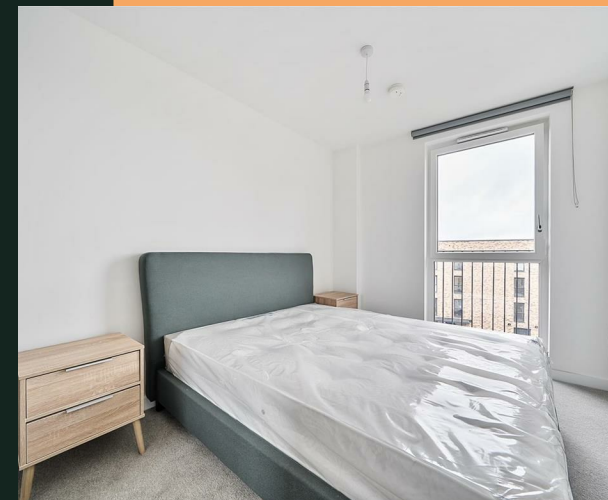


Griffiths Close, B12

PROPERTY ADDRESS

Apartment 315
3 Griffiths Close
Birmingham
B12 9BD

Energy Efficiency Rating		Current	Potential
Very energy efficient - lower running costs			
(92 plus) A			
(81-91) B		83	83
(69-80) C			
(55-68) D			
(39-54) E			
(21-38) F			
(1-20) G			
Not energy efficient - higher running costs			
England & Wales	EU Directive 2002/91/EC		



- Total cost of first month: £2,046.15 (rent & deposit)
- Co-working lounge
- Gym
- Cinema room
- Concierge

The modern apartment briefly comprises of a bright and airy open plan living, kitchen and dining area with a Juliet balcony, a double bedroom with fitted mirrored wardrobe, and a bathroom. The property benefits from high spec fixtures and fittings throughout.

Belgrave Village is the new vibrant neighbourhood located in the heart of Birmingham with access to local amenities such as Edgbaston stadium, Cannon Hill Park, Moseley Village, Broadway Plaza, Brindley Place, Bullring and Grand Central. These are all easily accessible with the excellent local transport system which includes a vast range of bus services and nearby train stations such as New Street, Snow Hill and Five Ways.

The development offers numerous facilities for residents including a concierge service, gym, co-working space and screening room, all set within attractive green surroundings.

Available from 6th August subject to acceptable referencing.

Rent: £950 per calendar month
Holding deposit: £219.23
Deposit: £1,096.15

