



Flutorum Avenue, Thornton
Offers over £74,995

Flutorum Avenue, Thornton

Ideal First-Time Purchase Or Buy-To-Let Investment! - 2 Bed Ground Floor Apartment In Thornton, With 2 Car Driveway & Private Gardens!

Allan England's award winning team at first for homes welcome to the market this bright and spacious 2-Bed Ground Floor Apartment situated within the desirable Village of Thornton. The property forms an ideal first-time purchase or buy-to-let investment. The accommodation comprises: entrance hallway, lounge, kitchen, 2 double bedrooms and family bathroom. Externally, there are private rear gardens as well as a 2 car driveway to the front. The property benefitted from a new roof in June 2024 and new windows 3 years ago. Early viewing essential to ensure you don't miss out!

HOME REPORT VALUE £78,000
EPC RATING - C
COUNCIL TAX BAND- A

Call first for homes - first for trust... first for service... first for aftercare!

Thornton provides local shopping for everyday requirements, primary schooling is also available. For the commuter the A92 allows swift access to Edinburgh and there is a railway station in Thornton itself. Nearby Kirkcaldy and Glenrothes provide a wealth of local amenities including shopping, schooling, sport and leisure.

These particulars are prepared on the basis of information provided by our clients. We have not tested the electrical system or appliances, nor where applicable, any central heating system. All sizes are recorded by electronic tape measurements to give an indicative, approximate size only. Prospective purchasers should make their own enquiries - no warranty is given or implied. This schedule is not intended to, and does not form any contract.





SITUATION - Thornton

ENTRANCE HALLWAY

LOUNGE

15'2" x 11'6" (approx) (4.63m x 3.52m (approx))

KITCHEN

11'3" x 6'2" (approx) (3.44m x 1.90m (approx))

BEDROOM 1

12'11" x 12'0" (approx) (3.95m x 3.68m (approx))

BEDROOM 2

12'11" x 8'6" (approx) (3.94m x 2.60m (approx))

FAMILY BATHROOM

7'8" x 4'10" (approx) (2.34m x 1.48m (approx))

2 CAR DRIVEWAY

PRIVATE GARDEN GROUNDS



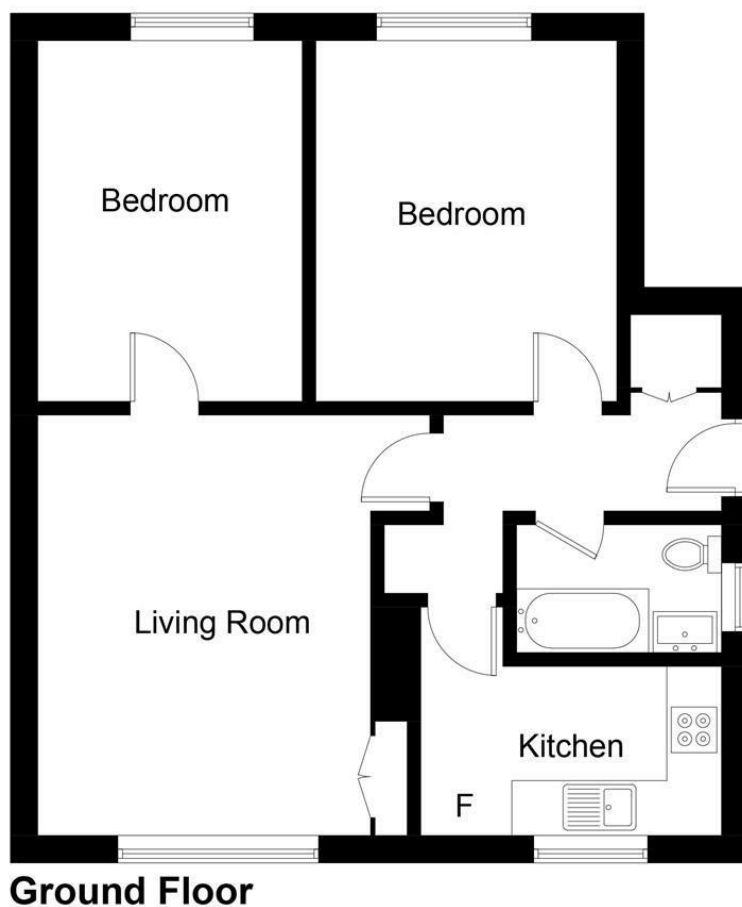


Illustration for identification purposes only, measurements are approximate,
not to scale. Fourlabs.co © (ID1292011)

Information

These particulars are prepared on the basis of information provided by our clients. We have not tested the electrical system or any electrical appliances, nor where applicable, any central heating system. All sizes are recorded by electronic tape measurement to give an indicative, approximate size only. Prospective purchasers should make their own enquiries – no warranty is given or implied. This schedule is not intended to, and does not form any contract.

FREE Valuation

Selling Your Home?

Choose first for homes - a highly experienced estate agency team you can trust to sell your home at the highest possible price. Offering fantastic savings on selling fees, with no compromise on service, free professional photography highlighting your home in its best light, first for homes will be your first choice. Contact us today to arrange your appointment.



first for trust



first for service



first for aftercare

first for homes
first for property in life - firstforhomes.co.uk

Contact Allan England's Team
01592 752 944

32 North Street, Glenrothes, Fife KY7 5NA
Fax: 01592 807947
sales@firstforhomes.co.uk
www.firstforhomes.co.uk