



Millfield House, 9

Gideon Walk



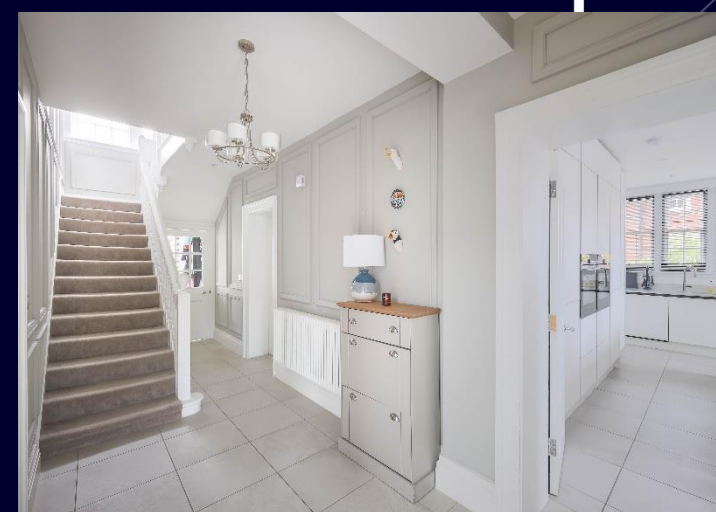
Milfield House, 9 Gideon Walk, Ponteland, NE20 0FT

Milfield House is a characterful four bedroom family home in the sought-after Jameson Manor estate, overlooking the green and set within wraparound gardens. With a detached double garage, parking for several cars and generous living space, it offers a rare combination of original character, outdoor space and a highly convenient location for Ponteland village and Newcastle city centre.

Inside, the house offers generous and versatile family accommodation, including three reception areas and a beautifully refitted kitchen/breakfast room with island and integrated appliances. The front rooms enjoy views across the green, while the rear family space opens onto the garden, making it an easy house to live in day to day as well as a great home for entertaining.

Upstairs there are four bedrooms, including a principal bedroom with ensuite, plus a family bathroom. Two of the bedrooms have fitted wardrobes, and the layout works well for family life as well as guests or home working.





Outside, the gardens are a major feature of the property, wrapping around the house and offering different places to sit and enjoy the sun throughout the day. Mature hedging, lawns, trees and patio terraces create both privacy and a lovely setting.

The house has a real sense of space and community, while remaining within easy reach of Ponteland village, schools, leisure facilities, restaurants, transport links and the airport.

Millfield House combines original character, a strong setting and a highly convenient location, making it a rare opportunity for buyers looking for something more individual than a standard modern family home.

Services: Mains gas, electricity, water & drainage | Tenure: Freehold | Council Tax: Band G | EPC: Rating D

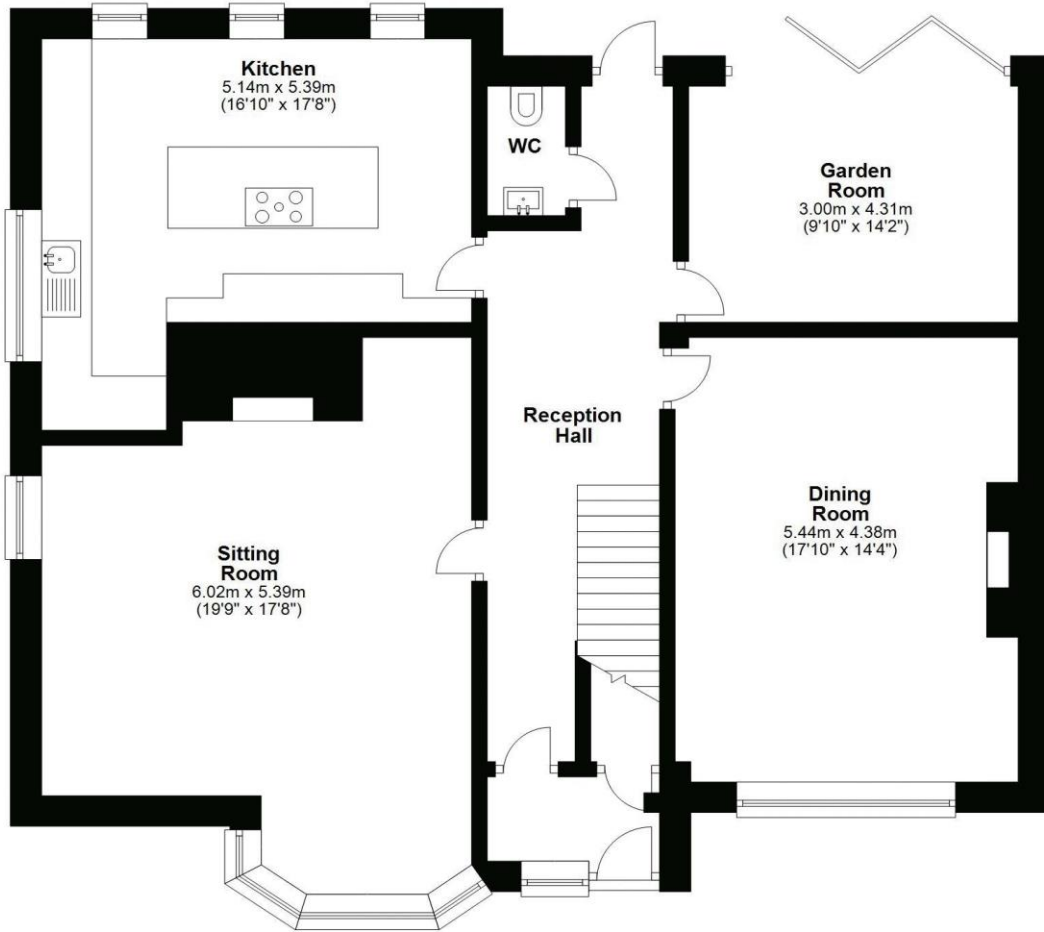
Price Guide: Offers Over £775,000





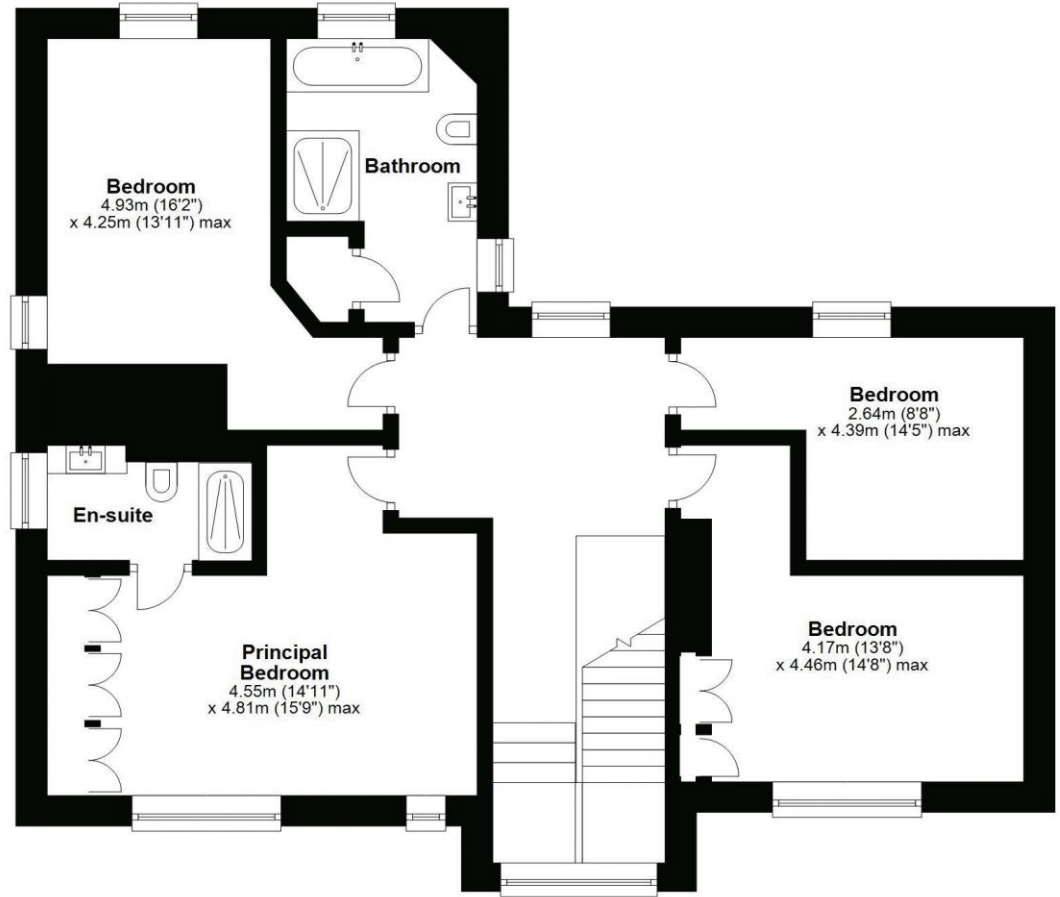
Ground Floor

Approx. 121.7 sq. metres (1309.5 sq. feet)



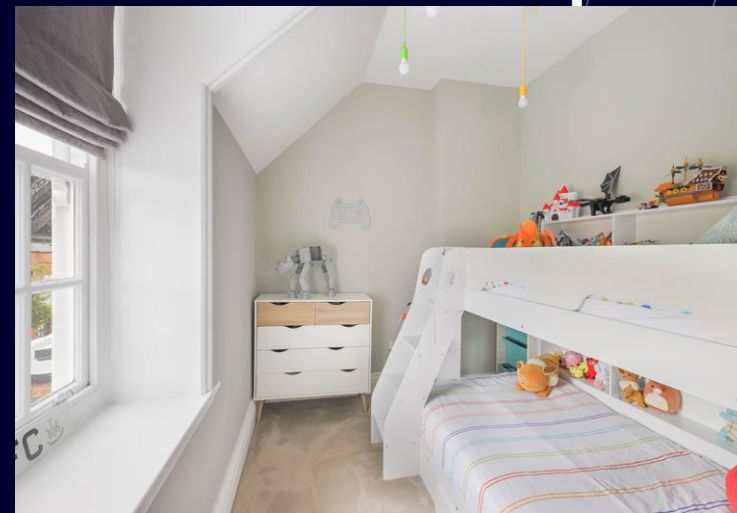
First Floor

Approx. 96.7 sq. metres (1040.3 sq. feet)



Total area: approx. 218.3 sq. metres (2349.8 sq. feet)

9 Gideon Walk, Ponteland









SANDERSON
YOUNG

Regional Gosforth Office
95 High Street | Gosforth
Newcastle upon Tyne | NE3 4AA
gosforth@sandersonyoung.co.uk
0191 213 0033