



NEWINGTON
LONDON

3 Bedrooms

Apartment

Located in London

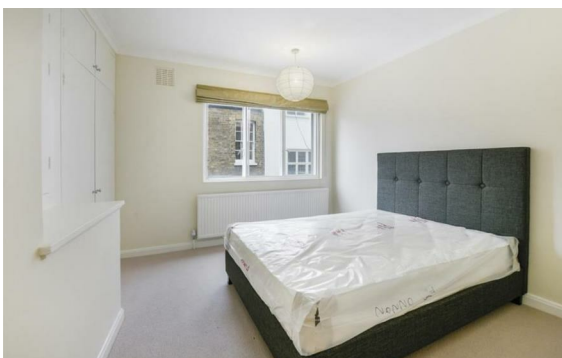
£950 Per Month



info@newingtonstates.com

<http://www.newingtonstates.com>

020 7724 2233



NEWINGTON LONDON

60 Upper Montagu Street

London

W1H 1SN

020 7724 2233

info@newingtonstates.com

Newingtons are delighted to present you this superb 2-3 bedroom flat set within this popular gated development in Marylebone. The property has porter, CCTV, communal gardens, gymnasium, sauna & swimming pool for residents and their guests. The property consists of two double bedrooms and a further SINGLE ROOM.

Broadley Terrace is enviably close to the peaceful, open spaces of Regent's Park and within reach to a wealth of restaurants, bars & shops. Nearest stations include Marylebone 0.2 miles (Bakerloo and British Rail) Zone 1. Baker Street Station 0.3 miles, (Jubilee, Bakerloo, Metropolitan, Hammersmith & City, District & Circle Lines) Zone 1. Edgware Road Station 0.3 miles (District & Circle) Zone 1. EPC RATING: C

Energy Efficiency Rating:

Agents Note: Whilst every care has been taken to prepare these particulars, they are for guidance purposes only. All measurements are approximate and are for general guidance purposes only and whilst every care has been taken to ensure their accuracy, they should not be relied upon and potential buyers/tenants are advised to recheck the measurements.

<http://www.newingtonstates.com>