



## Kensington Gardens Square, Bayswater, W2

**£1,335 Per Week**

This superbly refurbished two bedroom two bathroom apartment situated on the fourth floor (697 sq ft) within this stunning Grade II listed building with access to beautiful communal gardens.

The apartment has been interior designed and finished to the highest of standards with high end modern finishes whilst retaining its original Grade II listed features from the original building.

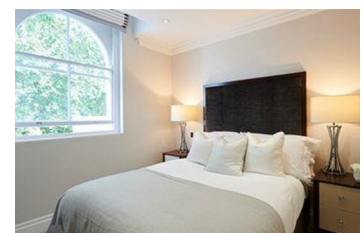
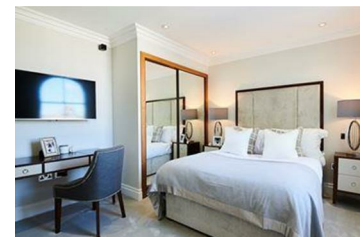
The apartment comprises splendid bedrooms with built in custom wardrobes one with en-suite bathroom, a luxurious reception room with bespoke furniture, an exquisite polished marble bathroom and a fully fitted bespoke Miele kitchen.

The apartment has access to the stunning communal gardens which is one of London's few remaining traditional Garden squares.

The building hosts 24 hour security, lift service, unique private access to Kensington Garden Square gardens and an emergency out of hour's maintenance service.

Garden House is located in a quiet residential part of W2 and close to the amenities of Westbourne Grove, Notting Hill and the beautiful Hyde Park including Whitley shopping mall. It is also perfectly located for easy access to transport links with Bayswater and Queensway tube station just 5 minutes walk away.

- Newly refurbished
- Communal gardens
- Access To Kensington Garden Square
- 24 hours porter
- 24 hour maintenance service
- New bespoke kitchen
- Lift



Energy Efficiency Rating		Environmental Impact (CO <sub>2</sub> ) Rating	
Current	Potential	Current	Potential
<p>Energy Efficiency Rating: Current A, Potential A</p>	<p>Energy Efficiency Rating: Current B, Potential A</p>	<p>Environmental Impact (CO<sub>2</sub>) Rating: Current 73, Potential 85</p>	<p>Environmental Impact (CO<sub>2</sub>) Rating: Current 73, Potential 85</p>