

Frank Harris & Co.



Holcroft Court, W1W

£3,033 pcm

This stylish one-bedroom flat is nestled in a highly desirable location, close to Regent's Park and well-connected transport links. This high-spec property has been renovated throughout and includes; wooden floors, plenty of storage, high-end appliances, and balcony.

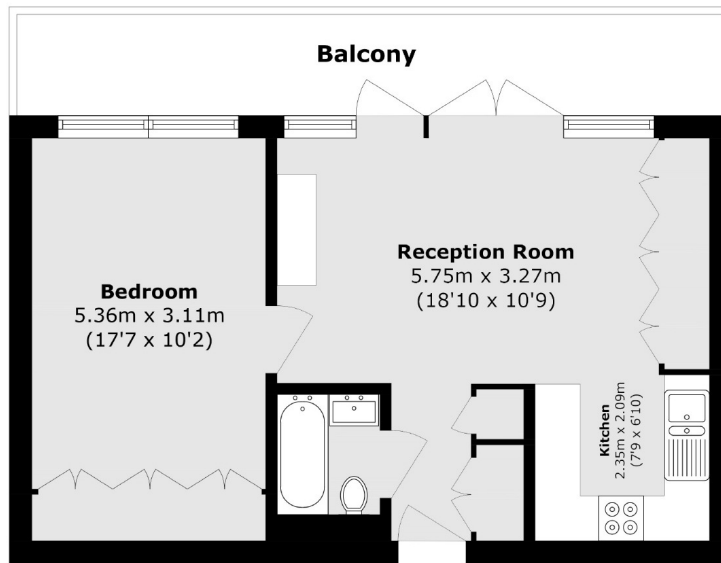


Situated in the vibrant Fitzrovia neighborhood, Holcroft Court offers a wealth of local amenities, including boutique shops and a variety of dining options. With Goodge Street station being 0.5 miles away and Great Portland Street station being 0.2 miles away.

- Recently renovated • Wooden floors • Over 500sq ft •
- Outside space • Furnished • Available immediately •



Frank Harris & Co.



Total area (approx.): 48.2 sq. m (518.8 sq. ft)
(Excluding Balcony)

Frank Harris & Co. Bloomsbury and Kings Cross
81 Marchmont Street, London,
WC1N 1AL
020 7387 0077
bloomsburylettings@frankharris.co.uk

Energy Rating: C. We aim to make our particulars both accurate and reliable. However they are not guaranteed; nor do they form part of an offer or contract. If you require clarification on any points then please contact us, especially if you're traveling some distance to view. Please note that appliances and heating systems have not been tested and therefore no warranties can be given as to their good working order.

