



**43 SOPWITH AVENUE  
CHESSINGTON  
KT9 1QE  
£250,000**

**TOP FLOOR FLAT**

**ONE BEDROOM**

**14'11 X 14'8 LIVING ROOM**

**10'5 X 8' MODERN KITCHEN**

**WHITE BATHROOM SUITE**

**DOUBLE GLAZED WINDOWS**

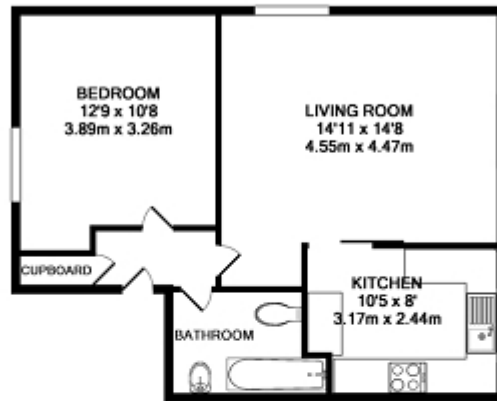
**GAS CENTRAL HEATING**

**COMMUNAL GARDENS**

**ALLOCATED PARKING SPACE**

**WELL PRESENTED**

**AN IDEAL FIRST TIME BUY**



Total Approx. Floor Area 463 Sq.Ft. (43.0 Sq.M.)

Whilst every attempt has been made to ensure the accuracy of the floor plan contained here, measurements of doors, windows, rooms and any other items are approximate and no responsibility is taken for any error, omission, or mis-statement. This plan is for illustrative purposes only and should be used as such by any prospective purchaser. The services, systems and appliances shown have not been tested and no guarantee as to their operability or efficiency can be given.  
Made with Metropix G2014