

Milton Road Sneyd Green Stoke-On-Trent ST1 6HS



Offers In Excess Of £170,000

Milton Road, Sneyd Green, Stoke-On-Trent, ST1 6HS

A STUNNING semi detached house, that's ready to view -
This TWO BEDROOM HOME could be the one for you -
A HIGH SPECIFICATION starts as you enter the door -
a BEAUTIFUL HOME you will adore -
Delightful dining kitchen for you to entertain -
and a LOVELY LARGE REAR GARDEN easy to maintain -
Local shops and amenities not very far -
& main bus routes, for those without a car -
for one lucky buyer this home would be -
contact DEBRA TIMMIS ESTATE AGENTS & book to see

Beautifully presented semi detached house situated on Milton Road, Sneyd Green. This property has been renovated throughout and is ready to move into. The accommodation briefly comprises of entrance hall, lounge with modern fire, dining kitchen, ground floor W.C., small utility area and rear porch. On the first floor there are two double bedrooms and a modern fully tiled bathroom. Gas combi boiler. UPVC double glazed windows and doors. Newly decorated and carpeted throughout. Front and large, landscaped gardens with decked patio area. Ideally situated for the local schools and other local amenities. No upward chain. Early viewing comes strongly recommended to avoid any disappointment.

ENTRANCE HALL

Entrance door. Radiator. Stairs off.

LOUNGE

Attractive modern fire surround housing an electric, remote controlled fire. Radiator. Picture rail. UPVC double glazed window to front elevation.



DINING KITCHEN

Stainless steel single drain sink unit having mixer taps, cupboards below. Range of matching wall and base units. Part tiled walls. Built in four ring gas hob and electric oven. Stainless steel canopy extractor

hood over. Fridge freezer housing cupboard. Radiator. UPVC double glazed window to the rear and side elevations. Radiator.

SMALL UTILITY AREA

Plumbing for washing machine. Glow worm combi boiler.

SEPERATE W.C.

Level level W.C. Radiator.

REAR PORCH

Work surface and rear door. Radiator.

LANDING

UPVC window to side elevation.

BEDROOM ONE

Two UPVC double glazed windows to front elevation. Radiator.



BEDROOM TWO

UPVC double glazed window to rear elevation.



BATHROOM

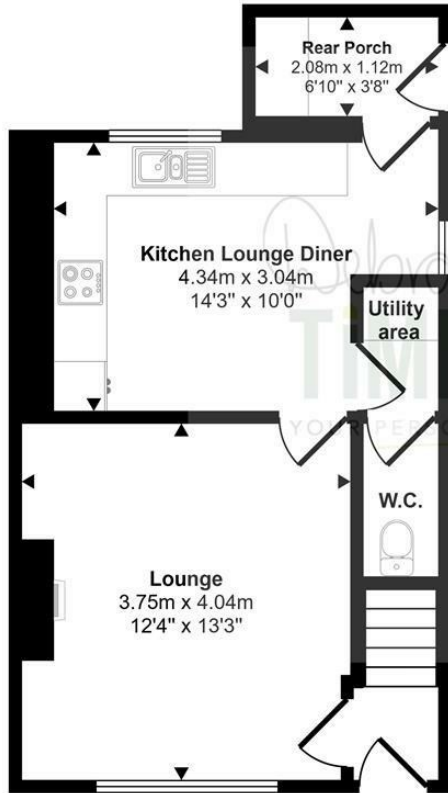
Modern bathroom suit comprising white suite having panelled bath with shower over. Pedestal wash hand basin and low level W.C. Fully tiled walls. Heated towel rail. UPVC double glazed window to rear elevation x 2.

EXTERNAL

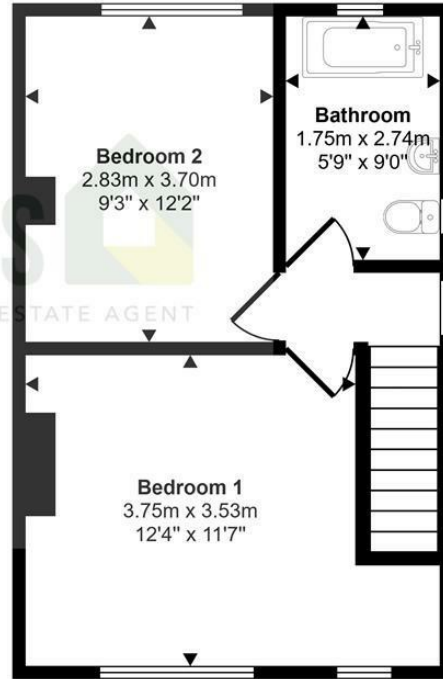
Front garden and large landscaped rear garden having decked patio area, gravel area, laid to lawn, well stocked borders, mature trees and enclosed by fencing.



Approx Gross Internal Area
72 sq m / 775 sq ft

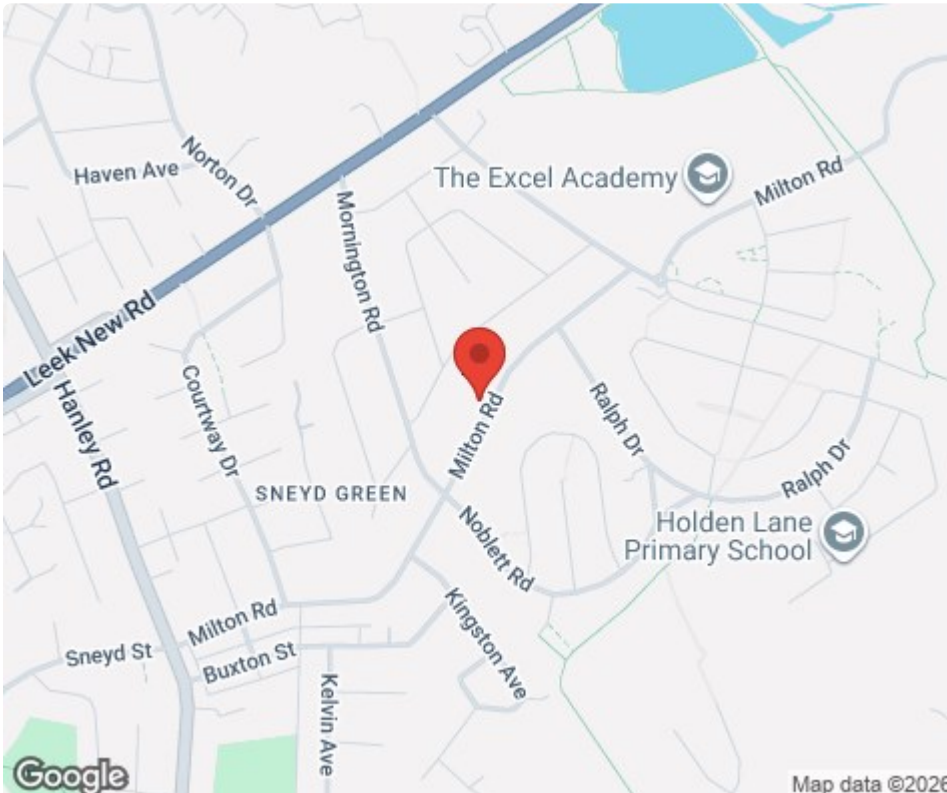


Ground Floor
Approx 37 sq m / 400 sq ft



First Floor
Approx 35 sq m / 375 sq ft

This floorplan is only for illustrative purposes and is not to scale. Measurements of rooms, doors, windows, and any items are approximate and no responsibility is taken for any error, omission or mis-statement. Icons of items such as bathroom suites are representations only and may not look like the real items. Made with Made Snappy 360.



Tenure: Freehold
Council Tax Band: B

Energy Efficiency Rating		
	Current	Potential
Very energy efficient - lower running costs		
(92 plus) A		
(81-91) B		82
(69-80) C		
(55-68) D	65	
(39-54) E		
(21-38) F		
(1-20) G		
Not energy efficient - higher running costs		
England & Wales	EU Directive 2002/91/EC	

Debra Timmis Estate Agents for themselves and for the vendors or lessors of this property whose agents they are give notice that (i) the particulars are set out as a general outline only for the guidance of intending purchasers or lessees, and do not constitute, nor constitute part of an offer or contract; (ii) all descriptions, dimensions, references to condition and necessary permissions for use and occupation, and other details are given without responsibility and intending purchasers or tenants should not rely on them as statements or representations of fact but must satisfy themselves by inspection or otherwise as to the correctness of each of them; (iii) no person in the employment of Debra Timmis Estate Agents has any authority to make or give any representation or warranty whatsoever in relation to this property.