

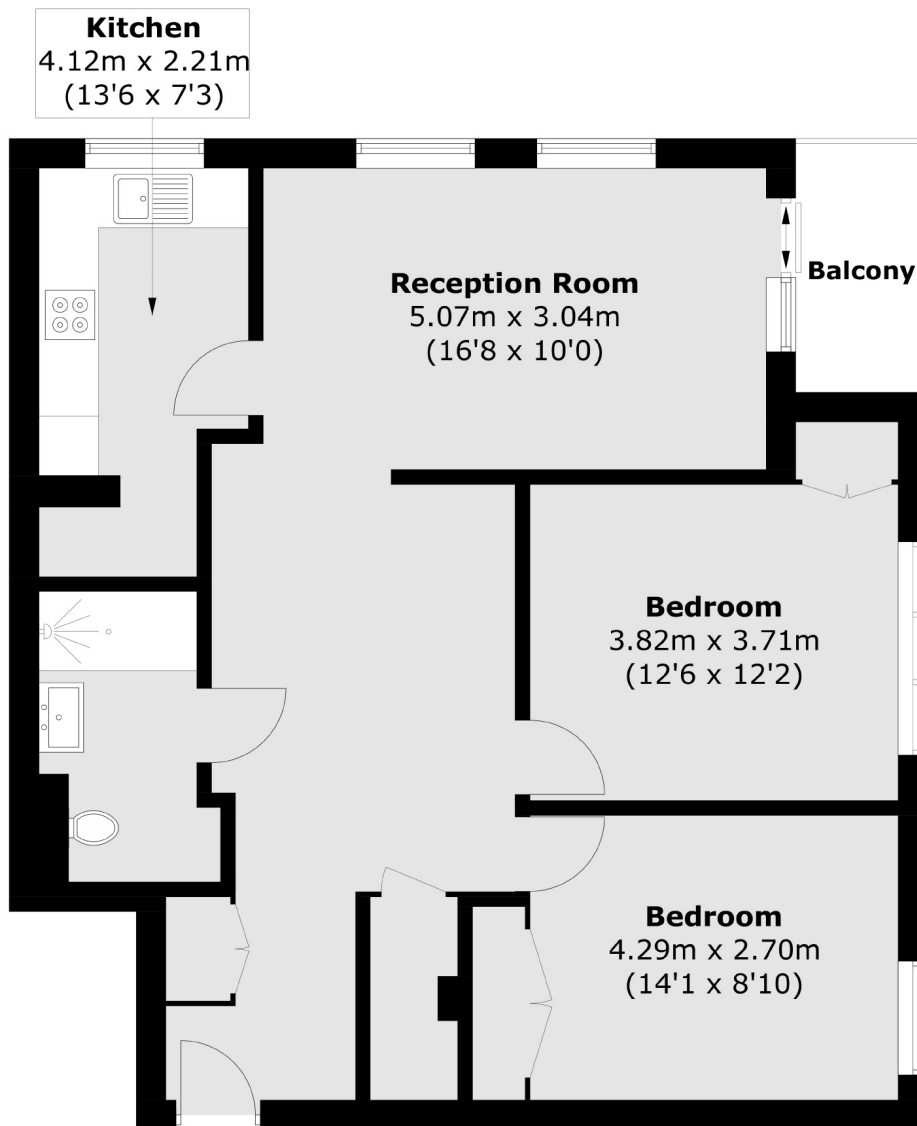


## **Green Vale, W5**

**£600 pw (£2,600 pcm)**

This spacious two bedroom apartment, has been finished to the highest standard. It has an open plan reception, lift access, private balcony, access to parking and panoramic views of central London from the tenth floor.

Gilbert Court is less than half a mile from North Ealing (Piccadilly line) station and the shops and amenities of Ealing Broadway are close by.



Total area (approx.): 75.4 sq. m (811.6 sq. ft)  
Balcony: 3.2 sq. m (34.4 sq. ft)

Robertson Smith & Kempson Ealing Lettings  
1 The Broadway,  
London, W5 2NT  
020 8840 7885  
ealinglettings@robertsonsmithandkempson.co.uk

Energy Rating: E. We aim to make our particulars both accurate and reliable. However they are not guaranteed; nor do they form part of an offer or contract. If you require clarification on any points then please contact us, especially if you're traveling some distance to view. Please note that appliances and heating systems have not been tested and therefore no warranties can be given as to their good working order.