



**Guide Price**  
**£150,000**

**Leasehold**

2x  1x  1x 

**Farm Close, Barns  
Green, Horsham, West  
Sussex, RH13**

**OVER 60?**

Secure this property  
for up to **59% less!**

**cubitt & west**  
Helping you move forwards



## Main features

- 2 Bedroom retirement bungalow
- Over 60's only
- No onward chain
- Popular location with parking and communal gardens
- In a peaceful village setting

## Accommodation

### GROUND FLOOR

Hallway

Lounge/Dining Room: 13'0 x 12'4  
(3.97m x 3.76m)

Kitchen: 12'3 x 5'8 (3.74m x 1.73m)

Shower Room

Bedroom 1: 13'0 x 9'2 (3.97m x 2.80m)

Bedroom 2: 11'7 x 7'5 (3.53m x 2.26m)

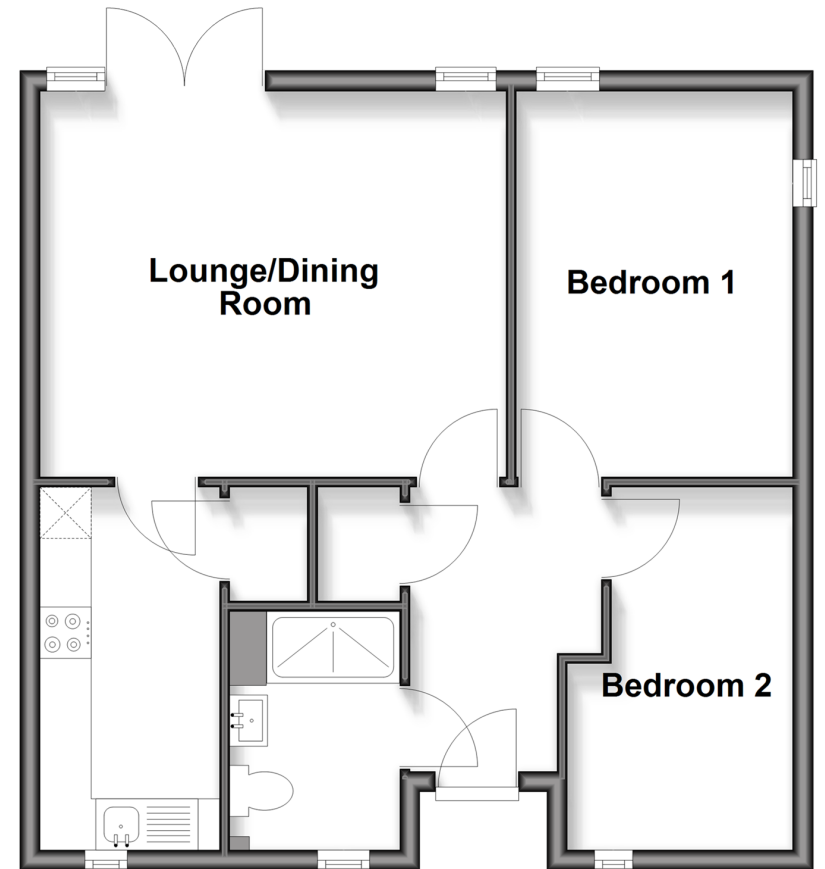
### OUTSIDE

Communal Gardens

Residents Parking

## Ground Floor

Approx. 53.3 sq. metres (573.9 sq. feet)



Call Southwater - 01403 731901 ■ [cubittandwest.co.uk](http://cubittandwest.co.uk)

- If buying to let, the energy rating will need to be improved to at least 'E' rating before you can let the property
- Through a Homewise Home For Life Plan people aged 60+ can secure this property for up to 59% less, by purchasing a Lifetime Lease



21909644/20260507/NJ/NJ