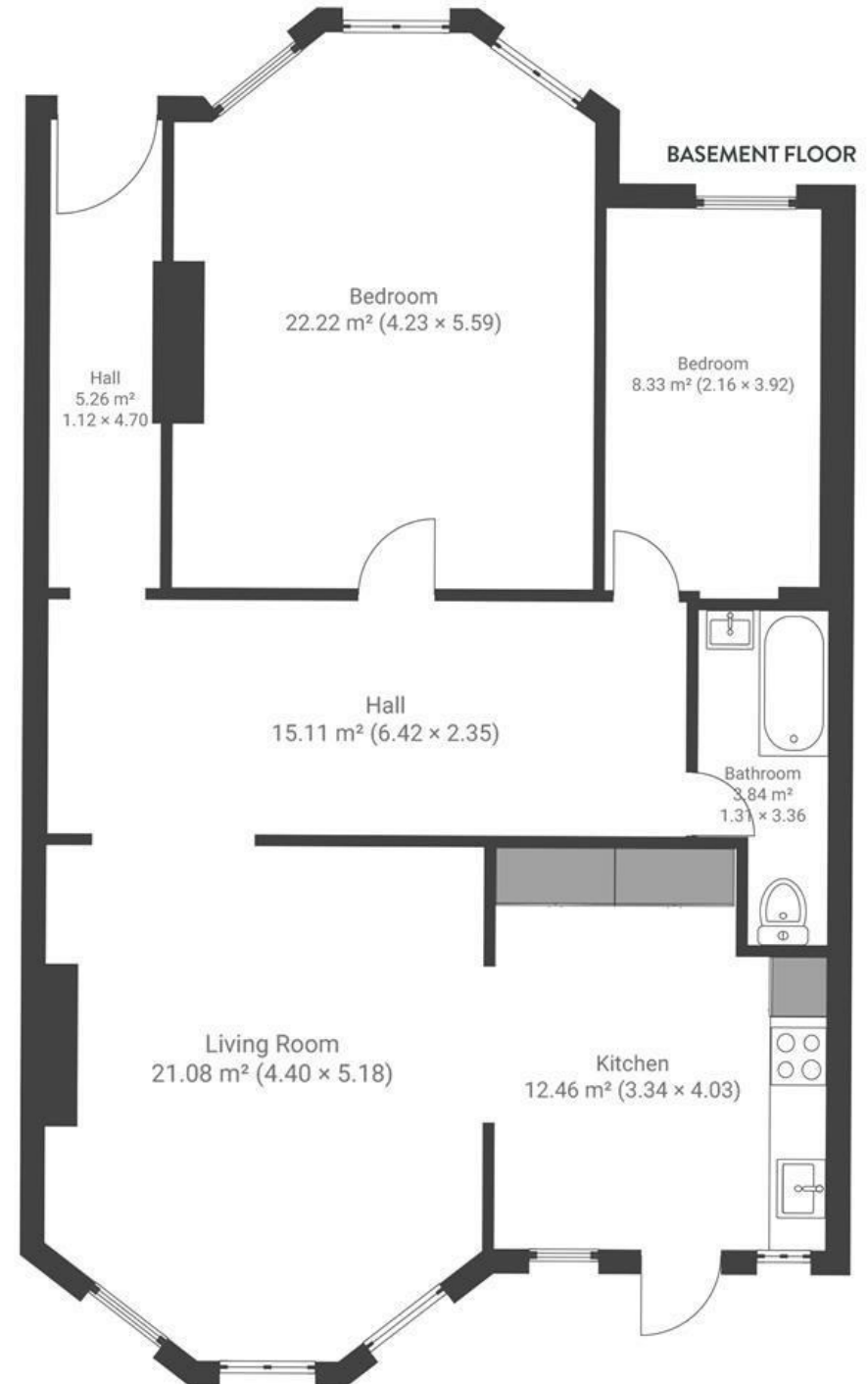


# Hampton Road

## REDLAND

APPROXIMATE FLOOR AREA  
92 SQM / 990 SQFT



Boardwalk

# Hampton Road , BRISTOL

---



£500,000



2 Bedrooms



BS6 6HL



1 Bathrooms

---

*"We have loved being able to sit out in such a peaceful garden, listening to the sound of the birds and enjoying all the greenery, whilst only being a few minutes away from everything that's going on. We've eaten at every restaurant on Cotham Hill, stopped in to every shop, and will miss the local community spirit here very much."*

