



www.kings-group.net

248 Hoe Street
Walthamstow E17 3AX
Tel: 020 8521 1122

Ascham End, London, E17 5EB
Auction Guide £75,000


Nestled in the desirable area of Ascham End, Walthamstow, this freehold land parcel presents a unique opportunity for potential development, subject to planning permission.


Ascham End is known for its vibrant community and convenient access to local amenities, making it an ideal location for those looking to invest in property. Whether you are considering building a residential dwelling or exploring commercial possibilities, this land provides a blank canvas to bring your ideas to life.

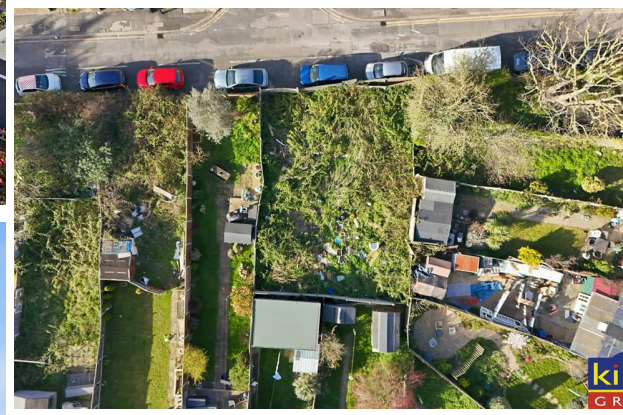
With the right planning permissions, this site could transform into a valuable asset in a sought-after area of Walthamstow. The potential for development here is significant, allowing you to tailor the project to meet the needs of the community or your personal aspirations.

This is a rare chance to secure a piece of land in a prime location, so do not miss out on the opportunity to explore the possibilities that await at Ascham End.



| Energy Efficiency Rating | | |
|--|----------------------------|---|
| | Current | Potential |
| <i>Vary energy efficient - lower running costs</i> | | |
| (92 plus) A | | |
| (81-91) B | | |
| (69-80) C | | |
| (55-68) D | | |
| (39-54) E | | |
| (21-38) F | | |
| (1-20) G | | |
| <i>Not energy efficient - higher running costs</i> | | |
| England & Wales | EU Directive 2002/91/EC |  |

| Environmental Impact (CO ₂) Rating | | |
|---|----------------------------|---|
| | Current | Potential |
| <i>Vary environmentally friendly - lower CO₂ emissions</i> | | |
| (92 plus) A | | |
| (81-91) B | | |
| (69-80) C | | |
| (55-68) D | | |
| (39-54) E | | |
| (21-38) F | | |
| (1-20) G | | |
| <i>Not environmentally friendly - higher CO₂ emissions</i> | | |
| England & Wales | EU Directive 2002/91/EC |  |







Associated Offices in London, Essex and Hertfordshire
Kings Head Office Tudor Lodge, Burton Lane, Goffs Oak, Hertfordshire EN7 6SY Tel: 01707-872000

