



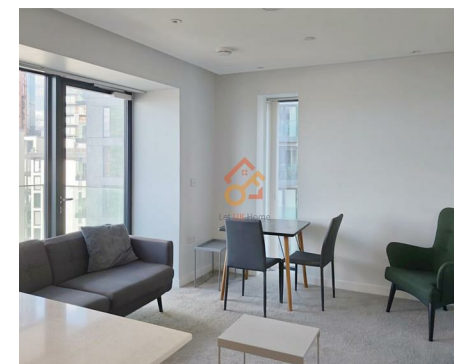
Let **UK** Home

2 Bedrooms

Flat

Located
in Manchester

£1,400 Per Month



padmin@letukhome.co.uk

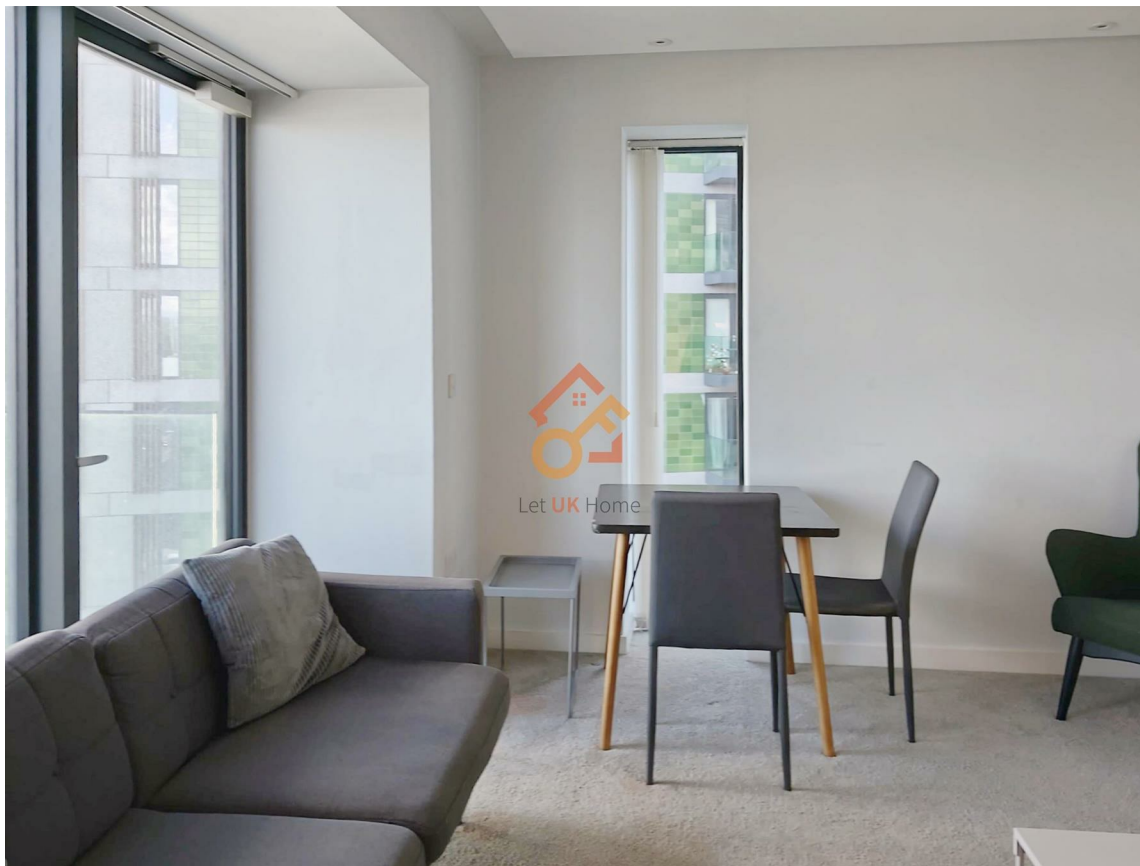
<https://www.letukhome.co.uk/>

01615219812



Bury Street Manchester

M3 7FW



Let UK Home are delighted to offer this two-bedrooms apartment, part of Local Blackfriars development, situated in Manchester.

The flat comprises a spacious open kitchen, a living area with a great-view balcony, one magnificent master bedroom with an ensuite, a bright bedroom and a large bathroom.

The development is fully equipped with premium facilities, including concierge and security service, residents-only gym and yoga studio, private cinema, co-working and meeting spaces, laundry and parcel collection services.

The property is surrounded by renowned educational institutions, situated close to Manchester's educational hub. Manchester Metropolitan University is within walking distance, while The University of Manchester's main campus is just cycle ride away. By car, you can also quickly reach the University of Salford and the Royal Northern College of Music.

Benefiting from unparalleled transport connections, the development offers easy walking access to three major city centre transport hubs: Victoria Station/Tram Stop, Deansgate Station, and Piccadilly Station, enabling seamless travel across Manchester and beyond.

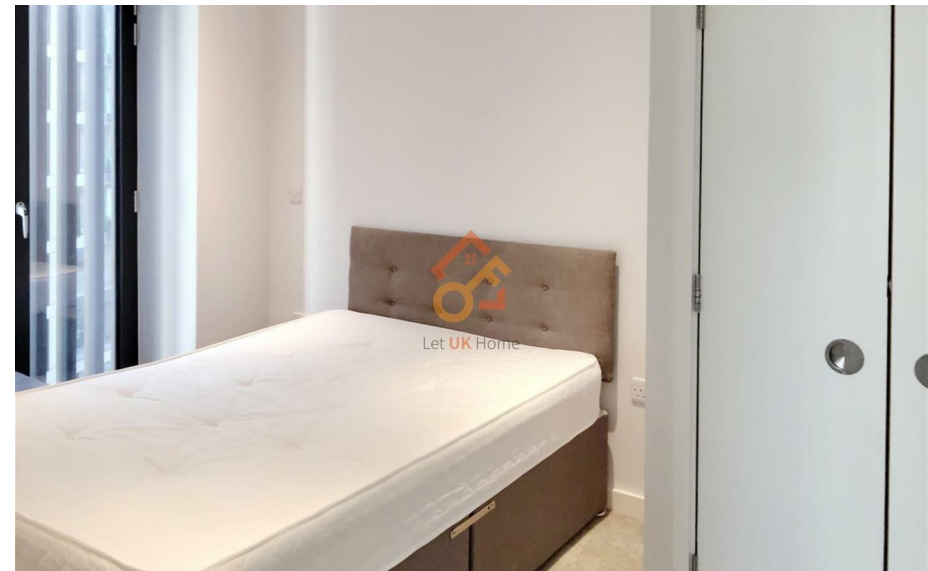
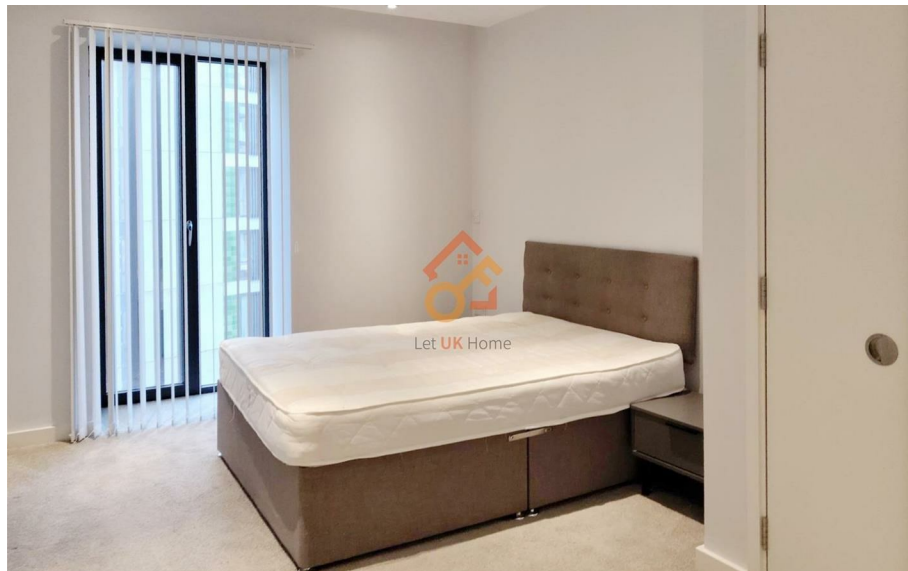
Located in the prime area of Manchester city centre, the development is surrounded by a wealth of commercial and entertainment amenities. Within walking distance, there are numerous acclaimed restaurants, boutique cafes, and themed bars.

Bury Street Manchester

£1,400 Per Month

- 24h Security
- Residents Gym
- Private Cinema
- Yoga Studio

- Concierge Service
- Laundry and Parcel Collection Services
- Co-working and Meeting Spaces
- EPC Rating: B





Let **UK** Home

1/F, St James Tower 7 Charlotte
Street
Manchester
M1 4DZ

01615219812

pmadmin@letukhome.co.uk

Council Tax Band: D

Local Authority:

Agents Note: Whilst every care has been taken to prepare these particulars, they are for guidance purposes only. All measurements are approximate and are for general guidance purposes only and whilst every care has been taken to ensure their accuracy, they should not be relied upon and potential buyers/tenants are advised to recheck the measurements.

Energy Efficiency Rating		Current	Potential
Very energy efficient - lower running costs			
(92 plus) A			
(81-91) B			
(69-80) C			
(55-68) D			
(39-54) E			
(21-38) F			
(1-20) G			
Not energy efficient - higher running costs			
England & Wales	EU Directive 2002/91/EC		

<https://www.letukhome.co.uk/>