

FOR SALE

Grafton Yard, Kentish Town NW5

PRICE £550,000.00



2 Bedroom



Kitchen



1 Reception



2 Bathroom



Parking Permit

Grafton Yard, Kentish Town NW5

PRICE £550,000.00

Situated in the sought-after Grafton Yard in Kentish Town NW5, this modern second-floor apartment offers a fantastic opportunity for those seeking a stylish urban lifestyle. Boasting two bedrooms, two bathrooms, and a bright reception room, this property spans 794 square feet and is newly refurbished to a high standard.

The apartment features an open-plan layout that enhances the sense of space and light, creating a welcoming atmosphere for residents. With a long lease and being chain-free, this property is the epitome of turnkey living, perfect for those looking to move in hassle-free.

Conveniently equipped with a lift for easy access, this apartment is located in a prime area within a desirable school catchment zone, making it an ideal choice for families. Additionally, the property benefits from an energy-efficient EPC rating of B, ensuring lower utility costs for the environmentally conscious buyer.

Offered at the asking price of £550,000, this property presents a rare opportunity to own a contemporary home in a vibrant neighbourhood. Don't miss out on the chance to make this beautifully appointed apartment your own.







550,000.00



Share of Freehold



London Borough of Camden



Council Tax Band



EPC Band



2 Bedroom



2 Bathroom



1 Reception



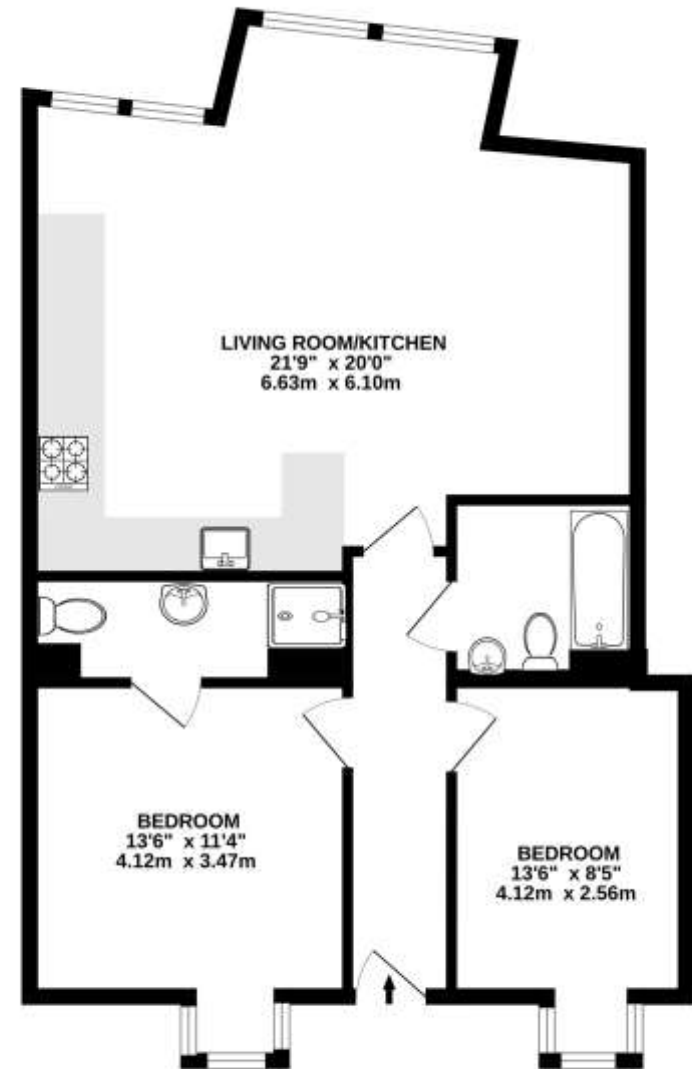
Parking Permit



KENTISH TOWN | 189 Kentish Town Rd | London | NW5 2JU | T: 020 7284 1222 | hello@oliverstown.com

ASSOCIATED MAYFAIR | 121 Park Lane | London | W1K 7AG | T: 020 3368 8602 | hello@oliverstown.com

SECOND FLOOR



TOTAL FLOOR AREA: 770sq ft (71.5 sq m) approx.

Whilst every attempt has been made to ensure the accuracy of the floorplan contained here, measurements of doors, windows, rooms and any other items are approximate and no responsibility is taken for any error, omission or mis-statement. This plan is for illustrative purposes only and should be used as such by any prospective purchaser. The services, systems and appliances shown have not been tested and no guarantee as to their operability or efficiency can be given.
Made with Metropix G2024

