



5, Temple Court, Bengoe

SG14 3LY

Price Guide £399,995



stevenoates.com



5 Temple Court, Bengeo, Herts, SG14 3LY

A spacious and well-presented two-bedroom home, ideally situated within the highly sought-after area of Bengeo, offering over 800 sq ft of versatile accommodation. This attractive property is perfectly suited to first-time buyers, downsizers, or investors, providing well-balanced and generous living space throughout. The ground floor features a welcoming entrance hallway, a well-proportioned separate kitchen, and a bright and spacious living room, ideal for both everyday living and entertaining. To the rear, a conservatory provides valuable additional space, perfectly suited as a dining area with pleasant views over the garden. To the first floor, the property continues to impress with two generous double bedrooms, both offering comfortable and practical accommodation, complemented by refitted shower room. Externally, the property enjoys a private rear garden, ideal for outdoor dining, relaxation, and entertaining. Located within the ever-popular Bengeo area, the property benefits from easy access to a range of local amenities, highly regarded schooling, and convenient transport links into Hertford town centre.

Temple Court is situated within the highly sought-after area of Bengeo, on the outskirts of Hertford town centre. The location offers a strong community feel and is well regarded for its excellent local schooling, including both primary and secondary options. Hertford town centre is within easy reach and provides a wide range of shops, cafes, restaurants, and bars, along with excellent transport links via Hertford North and Hertford East stations, offering direct access into London. The surrounding area also benefits from plenty of green spaces and countryside walks, making it ideal for those seeking a balance of town and country living.



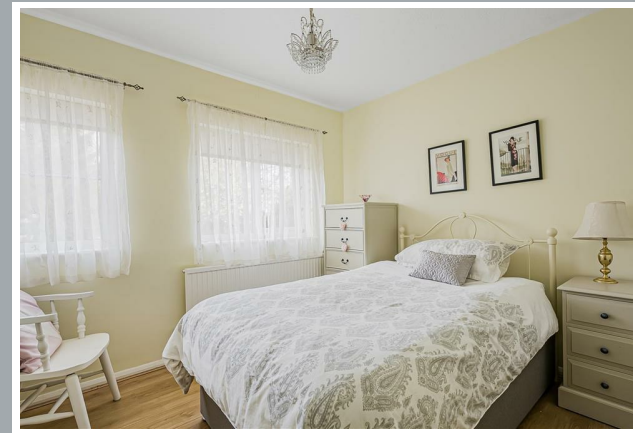
70 Fore Street, Hertford, Hertfordshire, SG14 1BY



70 Fore Street, Hertford, Hertfordshire, SG14 1BY



70 Fore Street, Hertford, Hertfordshire, SG14 1BY



70 Fore Street, Hertford, Hertfordshire, SG14 1BY



70 Fore Street, Hertford, Hertfordshire, SG14 1BY



70 Fore Street, Hertford, Hertfordshire, SG14 1BY

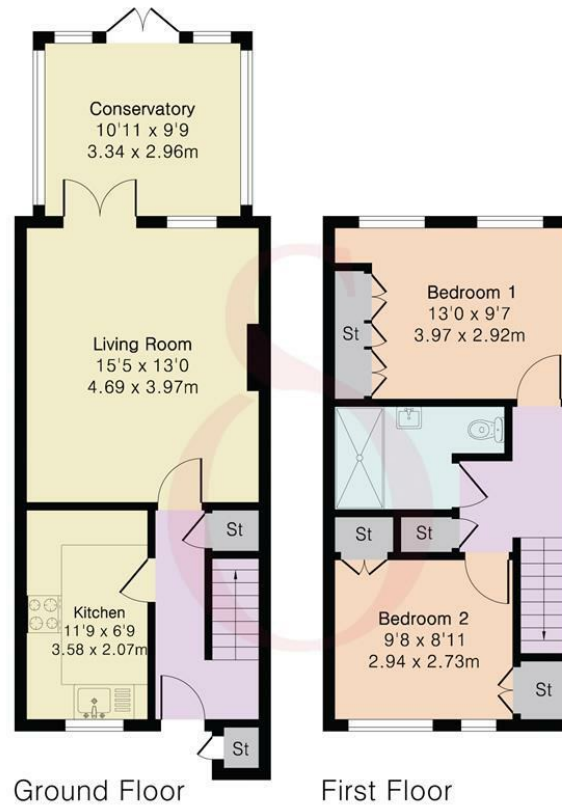


70 Fore Street, Hertford, Hertfordshire, SG14 1BY

Approximate Gross Internal Area 837 sq ft - 77 sq m

Ground Floor Area 478 sq ft - 44 sq m

First Floor Area 359 sq ft - 33 sq m



Floor plan produced in accordance with RICS Property Measurement 2nd Edition. Although Pink Plan Ltd ensures the highest level of accuracy, measurements of doors, windows and rooms are approximate and no responsibility is taken for error, omission or misstatement. These plans are for representation purposes only and no guarantee is given on the total square footage of the property within this plan. The figure icon is for initial guidance only and should not be relied on as a basis of valuation.



These particulars, whilst believed to be accurate are set out as a general outline only for guidance and do not constitute any part of an offer or contract. Intending purchasers should not rely on them as statements of representation of fact, but must satisfy themselves by inspection or otherwise as to their accuracy. No person in this firm's employment has the authority to make or give any representation or warranty in respect of the property.

