



## Sayer Street, SE17

£3,500 Per calendar month

A large Two bedroom apartment spanning 1,000sq ft within this modern development. The apartment is in fantastic condition has an amazing view of the peaceful communal courtyard

The development is a short walk to Elephant & Castle tube/train stations making this an easy commute into The City. The property is also spoilt for choice with cafés, bars and restaurants including the popular Mercato Metropolitano.

### Features

- Two Bedroom Flat
- Private Balcony
- Modern Development
- Resident's Gym
- Concierge
- 1,000sqft



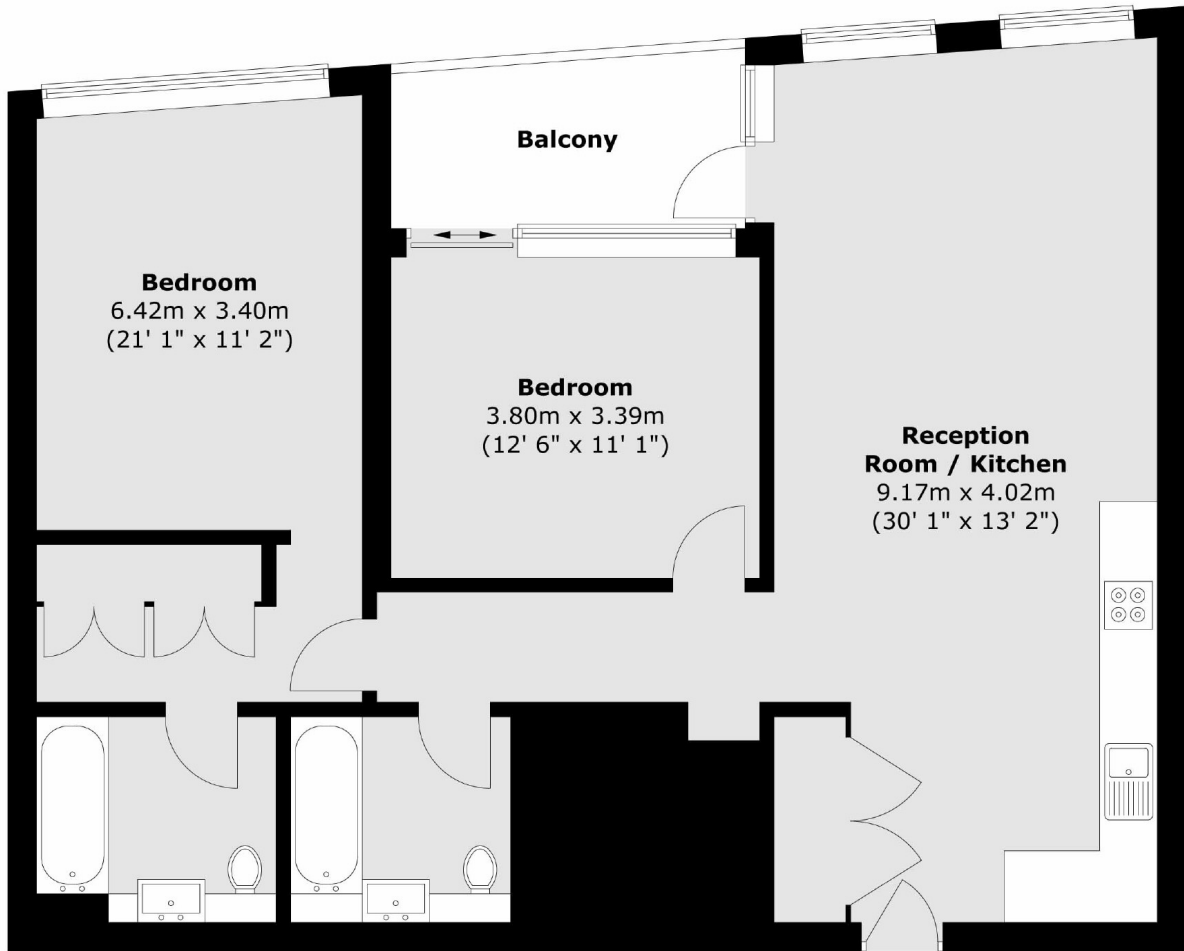
## Sayer Street, SE17

A large Two bedroom apartment spanning 1,000sq ft within this modern development. The apartment is in fantastic condition has an amazing view of the peaceful communal courtyard



# Sayer Street, London, SE17

## Third Floor



Total area (approx.) : 89.9 sq. m (968 sq. ft)  
Total balcony area (approx.) : 7.1 sq. m (76 sq. ft)