



Montpelier Grove, NW5

£2,750 Per calendar month

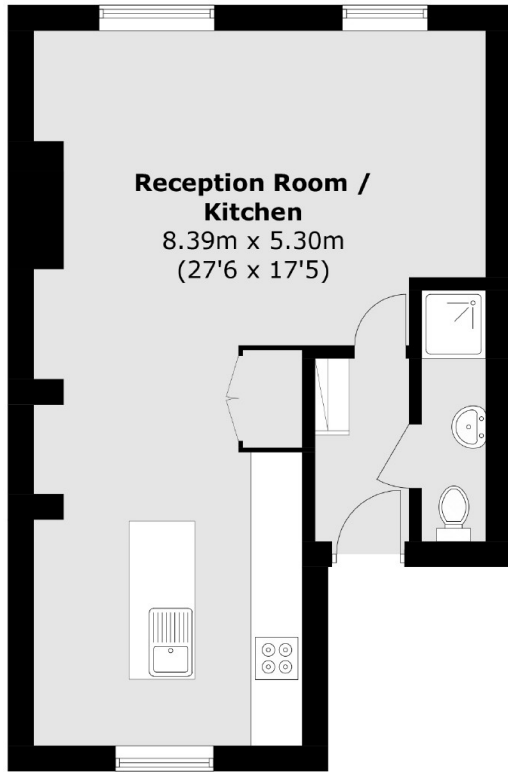
A stunning modern two double bedroom split level apartment on one of Kentish Town's prime residential roads. The property boasts a modern living area, as well as a third bedroom perfect for an office space, wooden floors, fully fitted kitchen with island and contemporary bathroom.

Montpelier Grove is a sought after residential road close to Kentish Town underground and over ground stations.

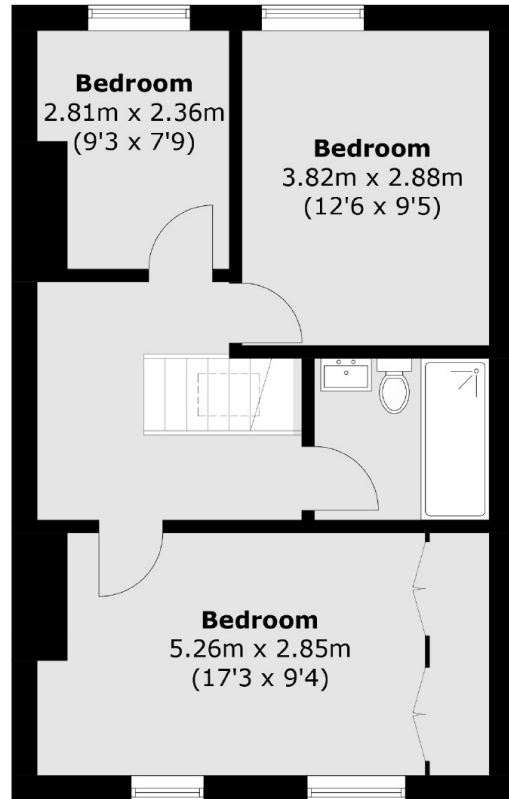
Features

- Newly Refurbished
- Split Level
- Two double bedrooms
- Excellent Location
- Office
- Good Transport

Montpelier Grove, London, NW5



Second Floor



Third Floor

Total area (approx.): 85.9 sq. m (924.6 sq. ft)