



PROPERTY
SERVICES
LIMITED



135 Northfield Road
, Coventry, CV1 2BQ

£750 Per Calendar Month



****ZERO DEPOSIT OPTION AVAILABLE****

SHARED ACCOMODATION - SINGLE OCCUPANCY ONLY

Looking for a little luxury? Look no further than these stunning Lux-Suites (revolutionized version of an en-suite) which are available just a 10 minute stroll to Coventry City Centre & University...the perfect co-living environment, furnished to a high standard & INCLUDING BILLS!

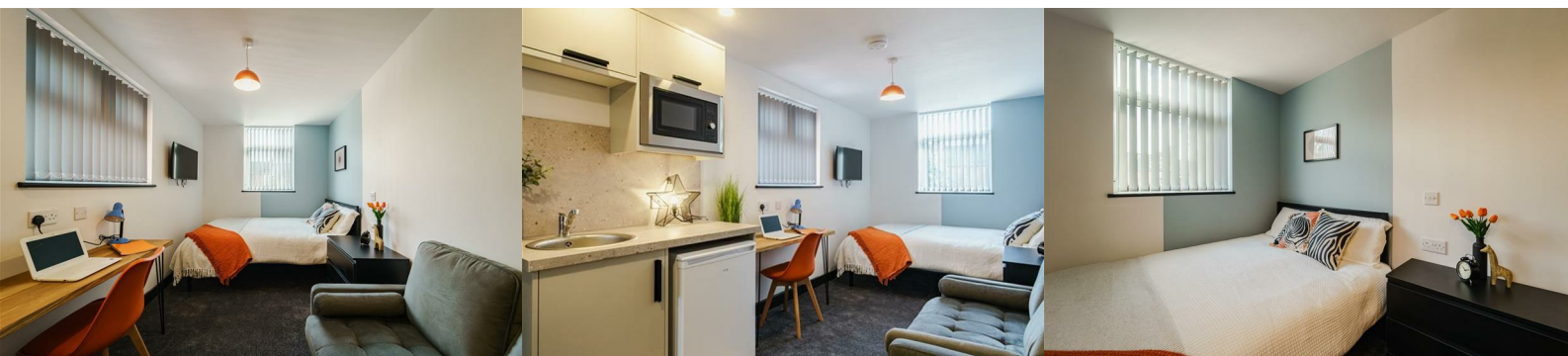
These little gems are available in a building which also contain contain kitchen/dining/living area, perfect for a bit of extra space when entertaining as well as the utility area and access to the garden.

The lux-suites have been designed to really appreciate and utilise the space exceptionally well, cleverly creating a subtle dividing bed/living area space. Main communal kitchen includes a hob and oven as well as a washing machine, tumble dryer, dishwasher, fridge/freezer, a lovely little lounge area with sofa, coffee table and TV, as well as a desk for all your study or work requirements. The shower room has a wonderfully modern tile design with a spacious shower, sink & toilet. The lux-suite comes fully furnished to a high standard throughout.

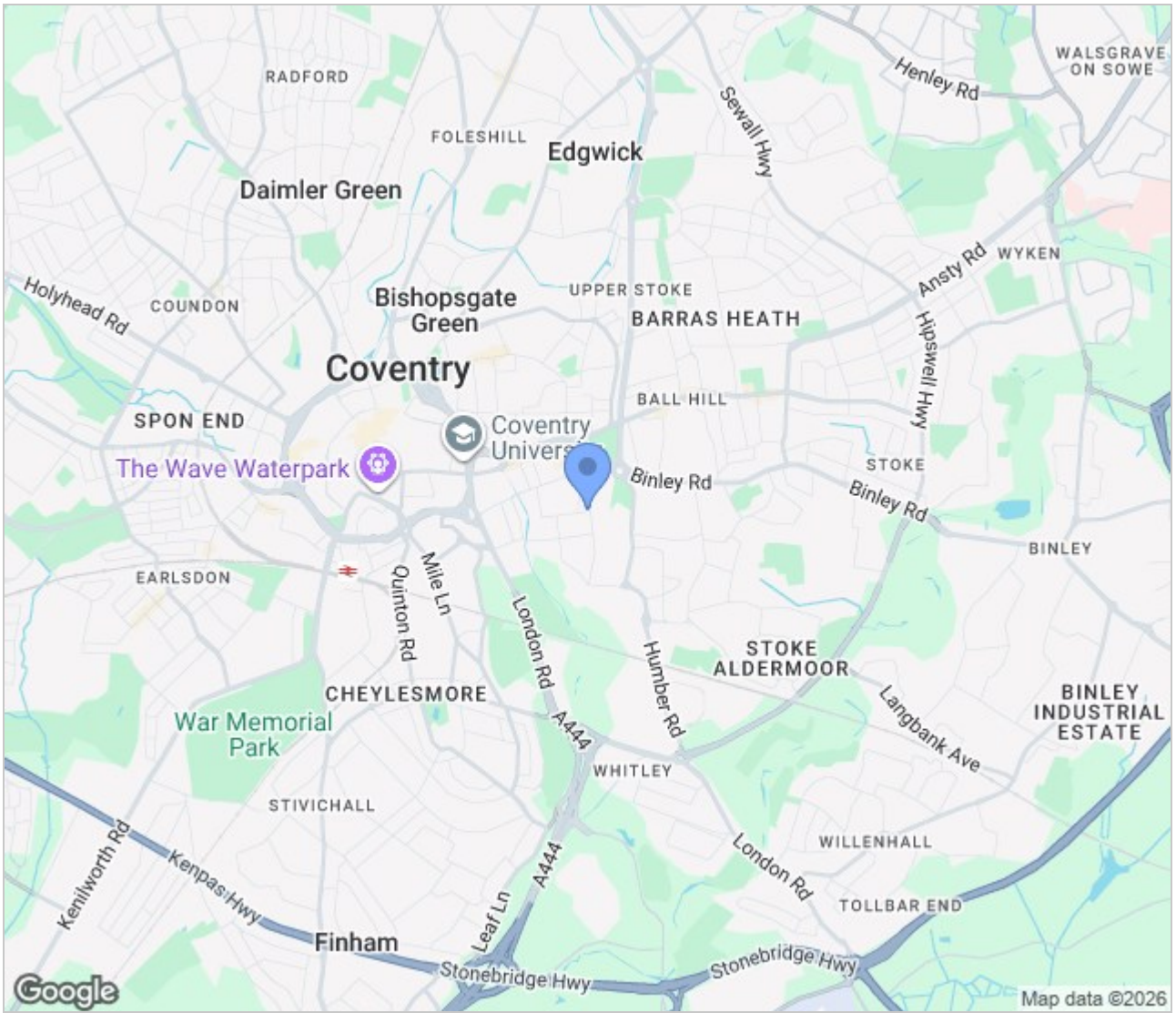
Available NOW

£750.00 per calendar month.

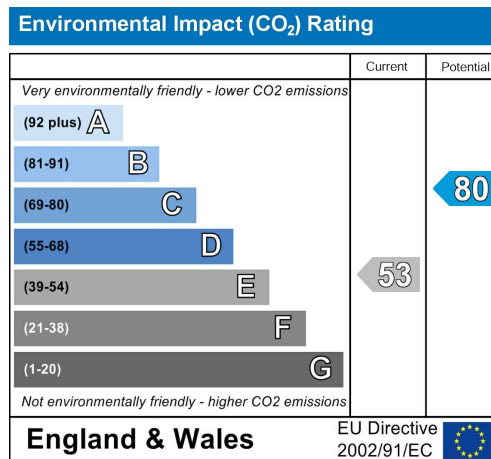
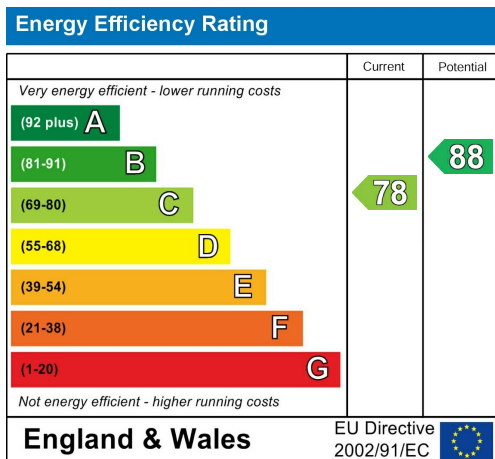
Including Bills (electric, gas, water, TV licence, WIFI & Council tax)



Area Map



Energy Efficiency Graph



These particulars, whilst believed to be accurate are set out as a general outline only for guidance and do not constitute any part of an offer or contract. Intending purchasers should not rely on them as statements of representation of fact, but must satisfy themselves by inspection or otherwise as to their accuracy. No person in this firm's employment has the authority to make or give any representation or warranty in respect of the property.

GLB Property Services Ltd
9 Hay Lane
Coventry, CV1 5RJ

T. 02476 433416

info@glbpropertyservices.com
www.glbpropertyservices.com

