



# Heathway Court

Finchley Road, NW3

£4,000 per month  
(£923.08 per week)

This stunning 3 bedroom property benefits from a south-west facing balcony, porter and parking set on the second floor of a mansion block. This apartment offers great living accommodation on the rear of the building with triple aspect views.

Benefiting from a bright double reception room, a separate kitchen, 2 generous size bedrooms one with en-suite bathroom and a principal suite. Heating included in the rental.

**CHESTERTONS**



# Heathway Court

## Finchley Road, NW3

- 3 Bedroom
- Porter
- South West Facing Balcony
- Lateral Apartment
- Lift In Building





**Minimum Term:** 12 months  
**Deposit Required:** £4,615.38  
**Local Authority:** London Borough of Barnet  
**Council Tax Band:** E  
**EPC Rating:** C  
**Furnished, Part Furnished, Unfurnished**

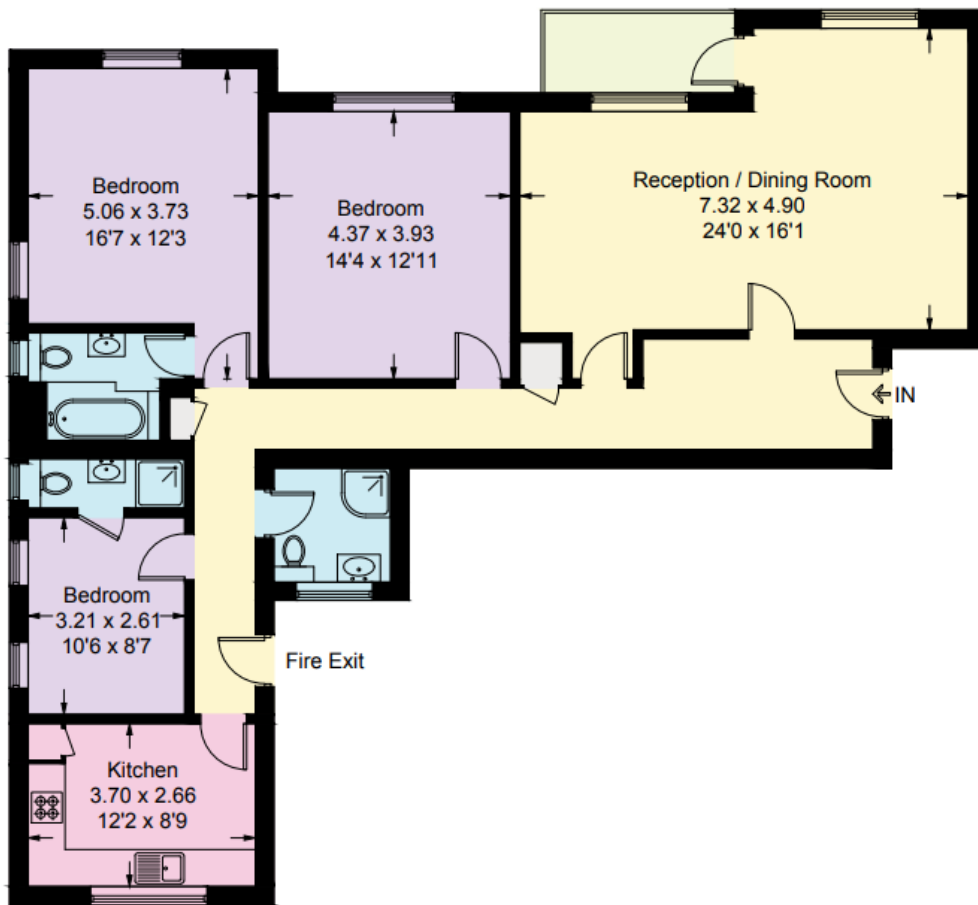
Score	Energy rating	Current	Potential
92+	A		
81-91	B		
69-80	C		
55-68	D		
39-54	E		
21-38	F		
1-20	G		
		70 C	91 B

### *Chestertons Hampstead Lettings*

55-56 Hampstead High Street  
 Hampstead  
 London  
 NW3 1QH  
[hampsteadlettingsusers@chestertons.co.uk](mailto:hampsteadlettingsusers@chestertons.co.uk)  
 02077941125  
[chestertons.co.uk](http://chestertons.co.uk)

Additional tenant charges apply (fees apply to non-AST tenancies only)  
 Tenancy Agreement Fee: £300  
 References per Tenant/Guarantor: £60  
 Inventory check (approx. £100 – £250 inc. VAT)  
[chestertons.co.uk/property-to-rent/applicable-fees](http://chestertons.co.uk/property-to-rent/applicable-fees)

Approximate Gross Internal Area = 119.9 sq m / 1291 sq ft



**Second Floor**

