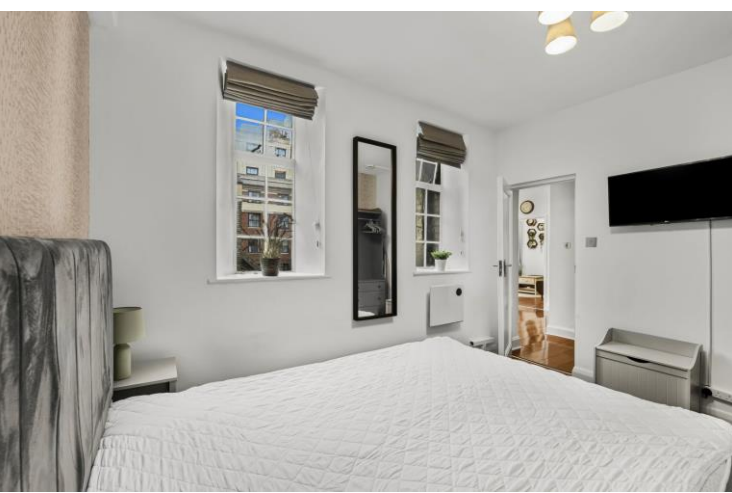




Quebec Court
Seymour Street, W1H





A bright and well-proportioned one-bedroom apartment set on the fifth floor of the sought-after portered building, Quebec Court, W1.

Offering approximately 545 sq ft of thoughtfully arranged living space, this elegant apartment benefits from excellent natural light and generous room proportions throughout.

The accommodation comprises a spacious reception and dining room, a separate fully fitted kitchen, two well-sized double bedrooms, and a contemporary bathroom. The property further features wooden flooring to the principal living areas, lift access, and is offered furnished and available immediately.

Residents of Quebec Court enjoy the convenience of a daytime porter and a secure, well-maintained building environment. Perfectly positioned moments from Oxford Street, Marble Arch, and Hyde Park, the apartment also benefits from easy access to the boutique shops and cafés of Marylebone and Connaught Village. Excellent transport connections are available via Marble Arch and Edgware Road Underground Stations.

- Two bedrooms and one bathroom
- Large reception and dining room
- Hot water and heating included in the rent
- Separate fully fitted kitchen
- Wooden flooring
- Fifth-floor lift access

£3,250 pcm

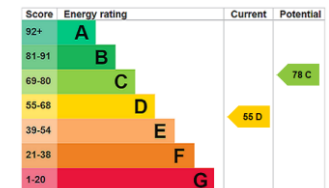
Additional tenant charges apply (fees apply to non-AST tenancies only)

Tenancy Agreement Fee: £300

References per Tenant/Guarantor: £60

Inventory check (approx. £100 – £250 inc. VAT)

chestertons.co.uk/property-to-rent/applicable-fees



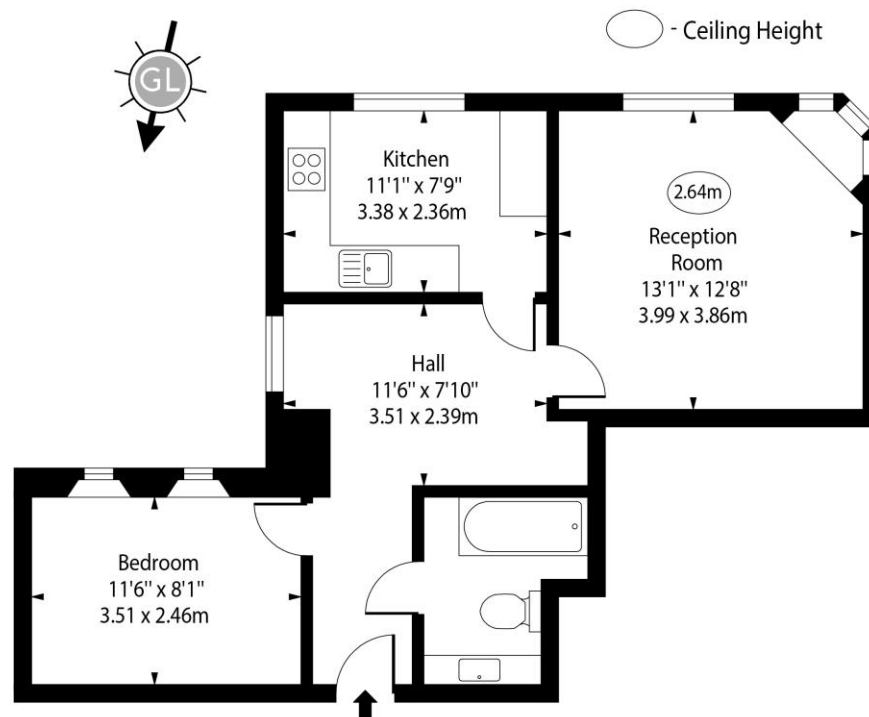
Minimum Term: 12 months
Deposit Required: Five weeks
Local Authority: City of Westminster
Council Tax Band: E
EPC Rating: D
Furnished

Chestertons Hyde Park & Marylebone Lettings

40 Connaught Street
 Hyde Park & Marylebone
 London
 W2 2AB

hydeparklettingsusers@chestertons.co.uk
 02072985950

Quebec Court,
Seymour Street, W1H



Fifth Floor

Approx Gross Internal Area 537 Sq Ft - 49.89 Sq M

Every attempt has been made to ensure the accuracy of the floor plan shown.
However, all measurements, fixtures, fittings, and data shown are approximate interpretations and
for illustrative purposes only. Measured according to the RICS. Not To Scale.

www.goldlens.co.uk

Ref. No. 030079E

Chesterton UK Services Limited trading as Chestertons for themselves and for the vendor of this property whose agents they are, give notice that (i) these particulars do not constitute any part of an offer or contract, (ii) all statements contained within these particulars are made without responsibility on the part of Chestertons or the vendor, (iii) whilst made in good faith, none of the statements contained within these particulars are to be relied upon as a statement or representation of fact, (iv) any intending purchasers must satisfy themselves by inspection or otherwise as to the correctness of each of the statements contained within these particulars, (v) the vendor does not make or give either Chestertons or any person in their employment any authority to make or give representation or warranty whatsoever in relation to this property. Wide angle lenses may be used. ©Copyright Chestertons | Chesterton Global Ltd | Registered Office 40 Connaught Street, Hyde Park, London W2 2AB Registered Company Number 05334580.



This paper is
100% recyclable