





# Courtland Crescent, Plympton

Guide Price £325,000

3 1 1



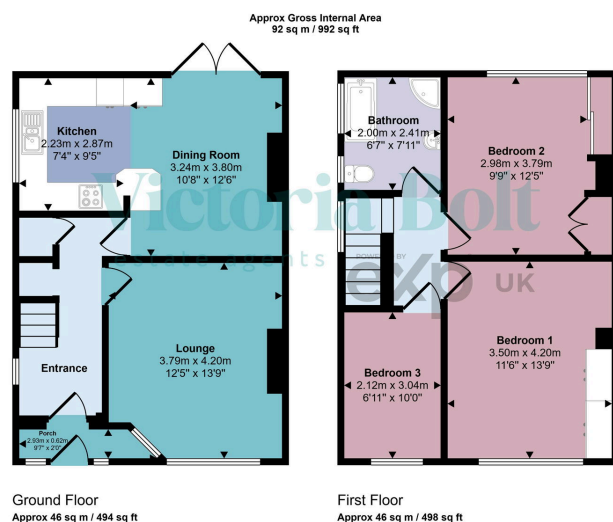
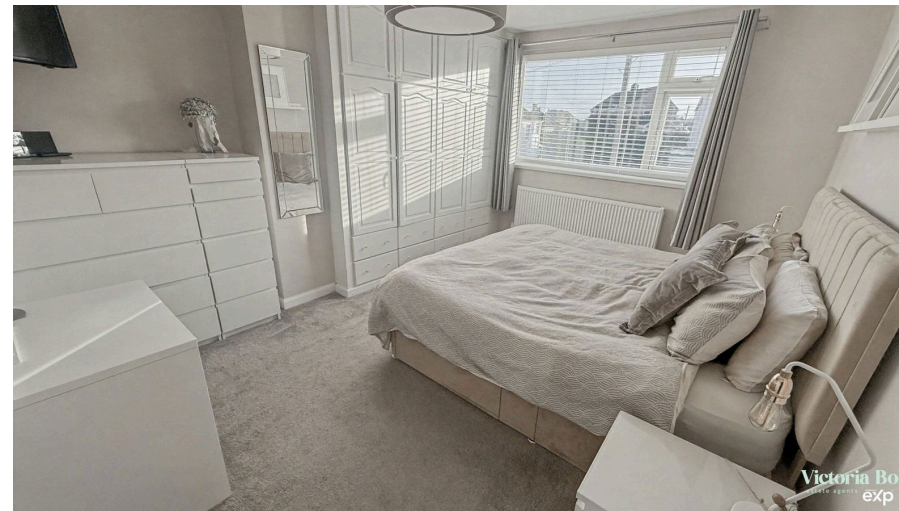
- Three-bedroom semi-detached family home
- Modern open-plan kitchen/diner to the rear
- French doors opening to the garden
- Driveway parking & garage
- Sought-after Plympton location near amenities & schools
- Separate lounge to the front
- Gloss kitchen with integrated appliances
- Contemporary four-piece bathroom (bath + separate shower)
- Enclosed rear garden with patio & lawn
- Turnkey, stylish and beautifully maintained throughout







A beautifully presented three-bedroom semi-detached home in a popular Plympton location, featuring a separate lounge, modern open-plan kitchen/diner, contemporary bathroom, enclosed garden and driveway with garage/store. Close to Ridgeway, schools and transport links — a superb turnkey family home.



This floorplan is only for illustrative purposes and is not to scale. Measurements of rooms, doors, windows, and any items are approximate and no responsibility is taken for any error, omission or mis-statement. Icons of items such as bathroom suites are representations only and may not look like the real items. Made with Made Snappy 360.

