

Flat 7, Langhurstwood Road, Horsham, RH12 4QD

Asking Price £315,000

Council Tax Band: B

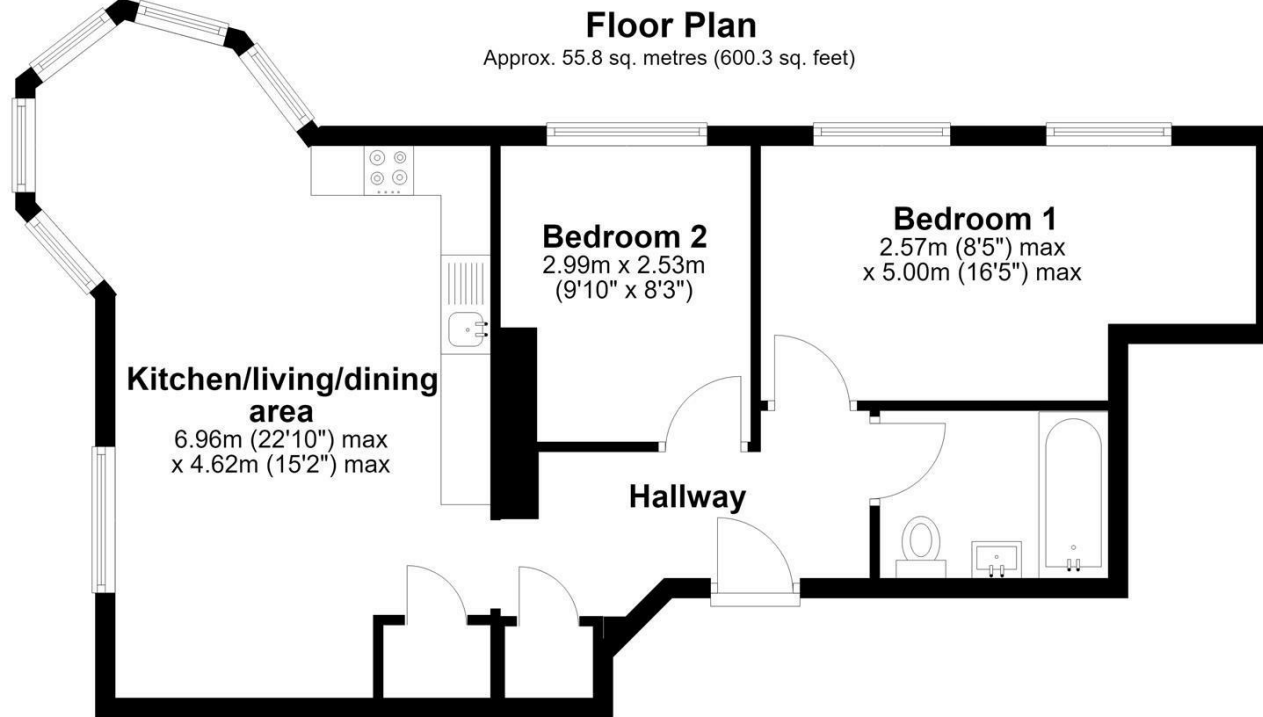


LOCATION

We are delighted to bring to the market this immaculate, stylish two-bedroom apartment in Graylands Manor. The location of the Graylands estate is perfect for those who want to enjoy the countryside and the convenience of Horsham town, with its wealth of cafes, shops and restaurants. Horsham mainline station is a 10 minute drive and you can walk to Warnham station (17 minutes) and change at Horsham, for the regular trains to London Victoria and London Bridge.



Open House Horsham



Total area: approx. 55.8 sq. metres (600.3 sq. feet)

Graylands Estate



Energy Efficiency Rating		
	Current	Potential
Very energy efficient - lower running costs		
(92 plus) A		
(81-91) B		
(69-80) C		
(55-68) D		
(39-54) E		
(21-38) F		
(1-20) G		
Not energy efficient - higher running costs		
England & Wales	69	69
	EU Directive 2002/91/EC	