



96A Parsonage Manorway, Belvedere

Offers Over £160,000



WILLIAM CHARLES

PROPERTY SERVICES LIMITED



This well-presented two-bedroom flat offers an excellent opportunity for cash buyers seeking a promising buy to let investment. Situated above a commercial premises, the property features a practical layout with two generously sized bedrooms, a bright living area, and a modern fitted kitchen. The flat benefits from a contemporary bathroom and neutral décor throughout, creating a comfortable and inviting atmosphere. With a 63 year lease remaining, this property is ideally suited to investors looking for a high-yield asset or those wishing to expand their portfolio. The location provides convenient access to local amenities, transport links, and a variety of shops and services (all within easy reach), making it attractive to potential tenants. The property is offered with no onward chain, ensuring a straightforward purchase process for cash buyers. This flat represents a rare opportunity to acquire a well-maintained home in a sought-after area, with strong rental demand and potential for long-term growth. Early viewing is highly recommended to appreciate the value and potential this property presents. Please note, due to the lease length and position above a commercial premises, the property is available to cash buyers only. Contact us today to arrange a viewing or for further information.

- Cash Buyers Only
- 45 Year Lease
- Situated above a commercial premises
- Roof Terrace





## 96A Parsonage Manorway

Belvedere, Belvedere

Council Tax band: B

Tenure: Leasehold

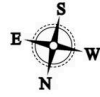
EPC Energy Efficiency Rating: F

EPC Environmental Impact Rating: G

- Cash Buyers Only
- 45 Year Lease
- Situated above a commercial premises
- Roof Terrace

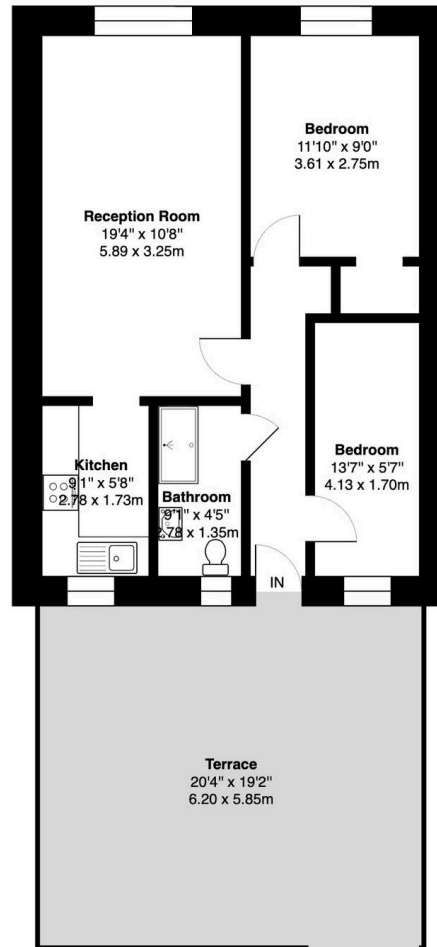






# Parsonage Manorway, DA17

Approximate Gross Internal Area = 585 sq ft / 54.4 sq m



First Floor

This floor plan was produced using RICS measurements standards 2nd edition.  
This plan is for layout guidance only and not drawn to scale unless stated. Window and door openings are approximate.  
Whilst every care is taken in the preparation of this plan, we would advise interested parties to check all dimensions, shapes and compass bearings prior to making any decisions reliant upon them. No liability is accepted for any errors.  
By Prime Square Photography / Copyright 2026





## William Charles Property Services

William Charles Property Services, 1 Bromley Road, Chislehurst - BR7 6LH

02082648264

[info@williamcharlesgroup.com](mailto:info@williamcharlesgroup.com)

<http://williamcharlesgroup.com>

