



TERRACE GARDENS, SW13

£850,000

End of terrace cottage
Two bedrooms
Private garden
Well presented
Extension potential (STPP)
Barnes Village

@marshandparsons
marshandparsons.co.uk

MARSH &
PARSONS



ABOUT THE PROPERTY

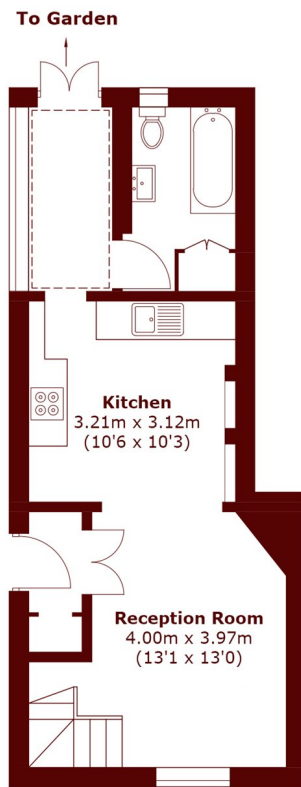
OFFERS IN EXCESS OF -

Marsh & Parsons is delighted to bring to the market this end-of-terrace cottage, neatly situated just moments from Barnes High Street, Barnes Bridge Station and the River Thames.

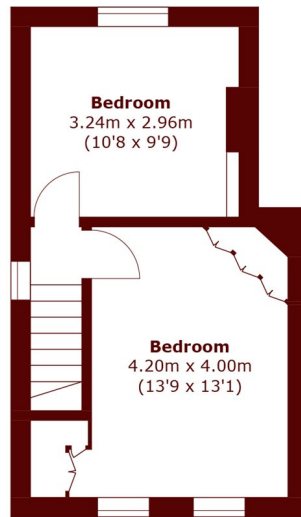
The property is very charming, with accommodation arranged over two floors, which is arranged to provide two double bedrooms, one of which has fitted wardrobes, a light and airy sitting room, modern kitchen/breakfast room, and a modern bathroom on the ground floor that leads from a small conservatory. There is a southerly facing rear garden which is enclosed and mainly laid with decking, with a further garden at the front.



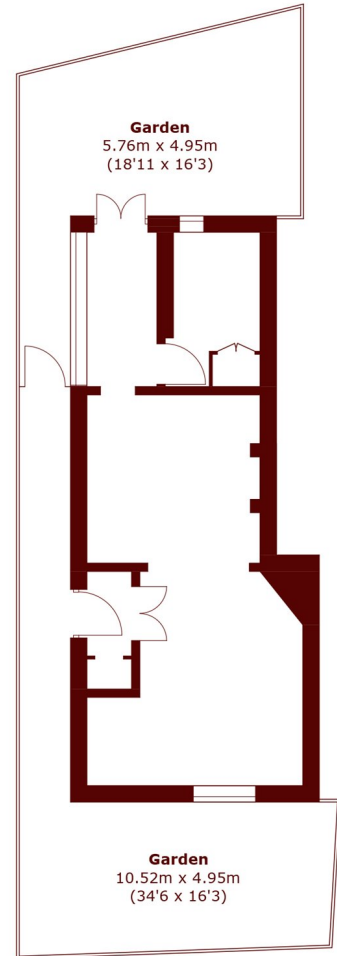
STEP INSIDE TERRACE GARDENS



Ground Floor



First Floor



SITE PLAN

(Not To Scale)

Total area (approx.): 62.6 sq. m (673.8 sq. ft)

Barnes & East Sheen
020 8563 8333

Energy Rating: E We aim to make our particulars both accurate and reliable. However, they are not guaranteed; nor do they form part of an offer or contract. If you require clarification on any points then please contact us, especially if you're traveling some distance to view. Please note that appliances and heating systems have not been tested and therefore no warranties can be given as to their good working order

**MARSH &
PARSONS**