



Price
£425,000

Freehold

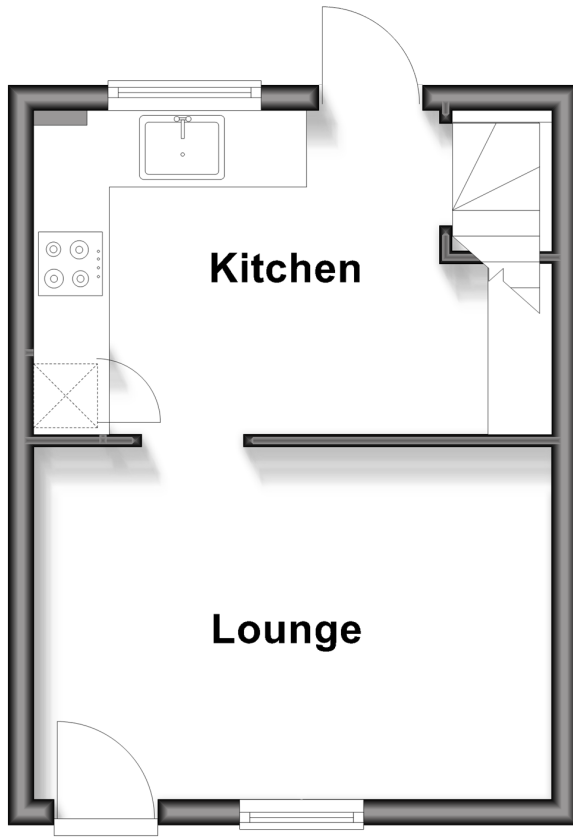
2x  1x  1x 

**Carters Cottages,
Redhill, Surrey, RH1**

cubitt & west
Helping you move forwards

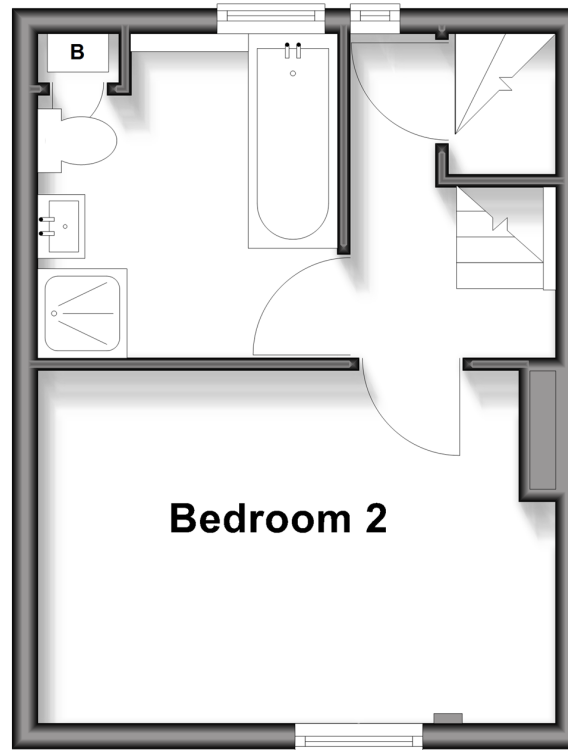
Ground Floor

Approx. 21.9 sq. metres (236.0 sq. feet)



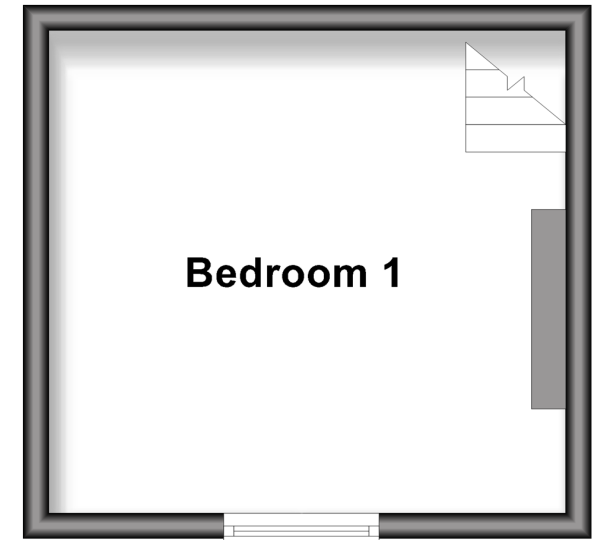
First Floor

Approx. 22.8 sq. metres (245.9 sq. feet)



Second Floor

Approx. 15.7 sq. metres (169.0 sq. feet)



Accommodation

GROUND FLOOR

Entrance Hall

Living Room: 12'5 x 9'0 (3.79m x 2.75m)

Kitchen: 12'5 x 10'0 (3.79m x 3.05m)

FIRST FLOOR

Landing

Bedroom 2: 13'7 x 9'4 (4.14m x 2.85m)

Bathroom: 8'6 x 7'2 (2.59m x 2.19m)

SECOND FLOOR

Landing

Bedroom 1: 13'7 x 12'3 (4.14m x 3.74m)

OUTSIDE

Rear Garden

Off Road Parking



Main features

- Charming end-of-terrace cottage full of character
- Set within stunning, well-maintained communal grounds in a highly sought-after location
- Fitted kitchen with modern integrated appliances
- Spacious and cosy living area featuring beautiful exposed beams
- Four-piece bathroom suite including both a bath and separate shower



Nearest Schools

Primary Schools: St John's Primary 0.1 miles, Earlswood Junior School 1.1 miles, St Joseph's Catholic Primary, Redhill 1.3 miles
Secondary Schools: Reigate School 1.1 miles, Carrington School 1.4 miles, St Bede's School 1.4 miles

Transport Information

Train Stations: Earlswood 0.6 miles, Redhill 1.1 miles, Nutfield 2.0 miles

Address

Carters Cottages, Redhill, Surrey, RH1

Directions

For directions to this property please contact us.





cubitt&west
Helping you move forwards

Call Redhill Branch 01737 778866 ■ cubittandwest.co.uk



Unable to display material information. Please check with the branch for material information details for this property



23411775/20260418/AB/JB2