



5 Tewkesbury Road Golborne, Warrington, WA3 3LZ £925 PCM

JonesPottsTaylor are delighted to present TO LET this well presented, two-bedroom semi-detached true bungalow. Situated in a popular residential location in Golborne, close to transport and network links, schools, shops and amenities. The property briefly comprises of; entrance hallway, living room and fitted kitchen with a door leading to the rear garden. There are two double bedrooms and a wet room to include shower. Outside to the front of the property is an enclosed garden area which leads around to the side and rear. To the rear of the property is an enclosed low maintenance garden area, with access to a detached garage. Access to the garage is also available from the side street with a driveway providing off road parking, Viewings will be required and under a block viewing schedule.

Viewing

Please contact our Jones Potts Taylor Office on 01942 368600 if you wish to arrange a viewing appointment for this property or require further information.



2



1



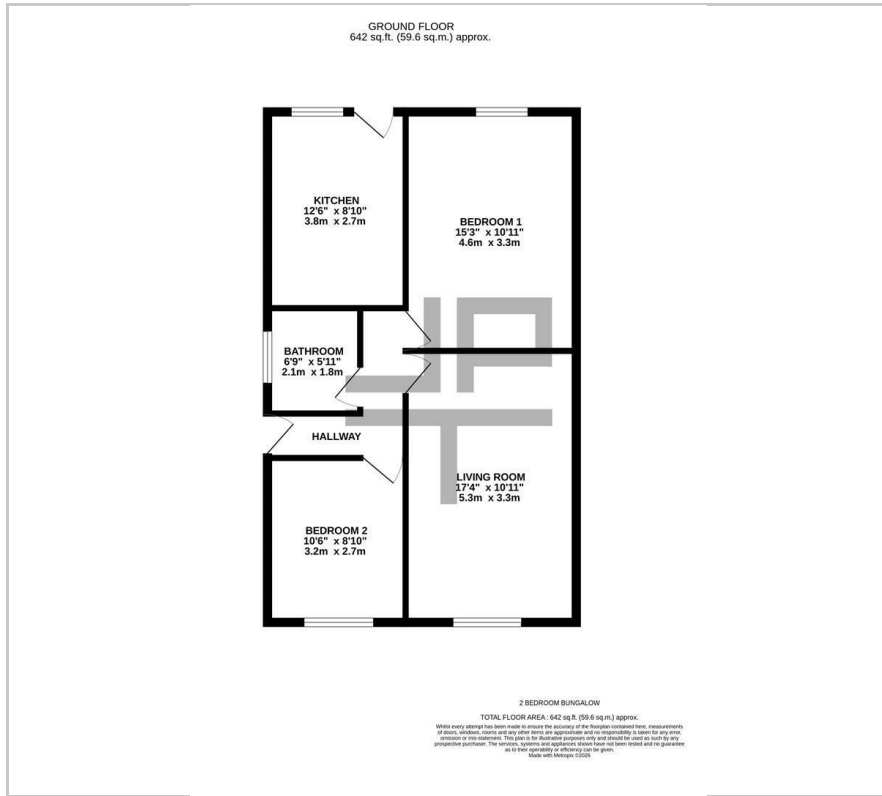
1



D



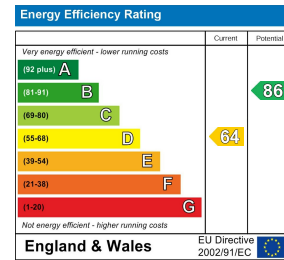
Floor Plan



Area Map



Energy Efficiency Graph



These particulars, whilst believed to be accurate are set out as a general outline only for guidance and do not constitute any part of an offer or contract. Intending purchasers should not rely on them as statements of representation of fact, but must satisfy themselves by inspection or otherwise as to their accuracy. No person in this firm's employment has the authority to make or give any representation or warranty in respect of the property.