



Guide Price
£275,000

Freehold

2x  1x  1x 

**Taylor Road, Lydd On
Sea, Romney Marsh,
Kent, TN29**

OVER 60?

Secure this property
for up to **59% less!**

Wards
Helping you move forwards



Main features

- Large conservatory to enjoy the garden from all year round
- No onward chain so a quick sale is possible
- Bright and airy accommodation
- Bus stop nearby taking you along the coast
- Close to shops and amenities

Accommodation

GROUND FLOOR

Porch

Entrance Hall

Lounge: 17'5 x 11'4 (5.31m x 3.46m)

Kitchen: 12'6 x 6'3 (3.81m x 1.91m)

Bedroom 1: 11'9 x 8'5 (3.58m x 2.57m)

Bedroom 2: 12'0 x 8'2 (3.66m x 2.49m)

Conservatory: 21'8 x 9'5 (6.61m x 2.87m)

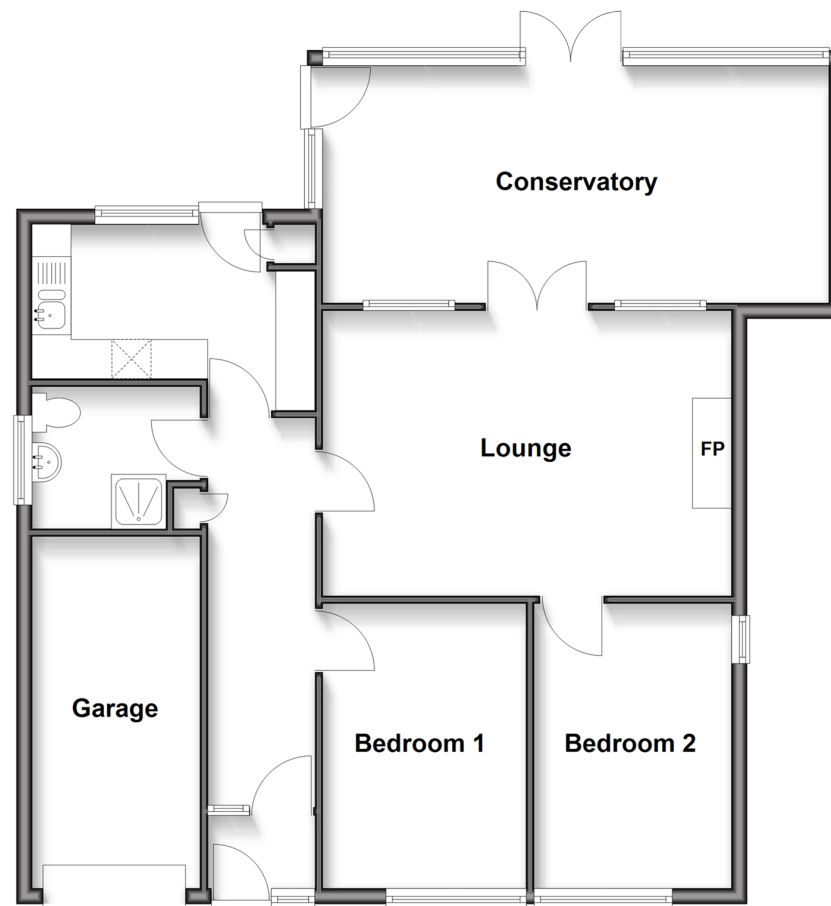
OUTSIDE

Off Road Parking

Garage

Front & Rear Gardens

Ground Floor
Approx. 90.4 sq. metres (972.6 sq. feet)



Call New Romney - 01797 363745 ■ wardsofkent.co.uk

- A private rental licensing scheme applies to some properties in this area, please contact us before proceeding
- Legal advice should be taken to verify fixtures/fittings, planning, alterations and/or lease details
- Appliances & services are untested, dimensions are approximate and floor plans are not to scale
- Through a Homewise Home For Life Plan people aged 60+ can secure this property for up to 50% less, by purchasing a Lifetime Lease.

