



 **3**
Bedrooms

 **1**
Bathroom

 **1**
Receptions



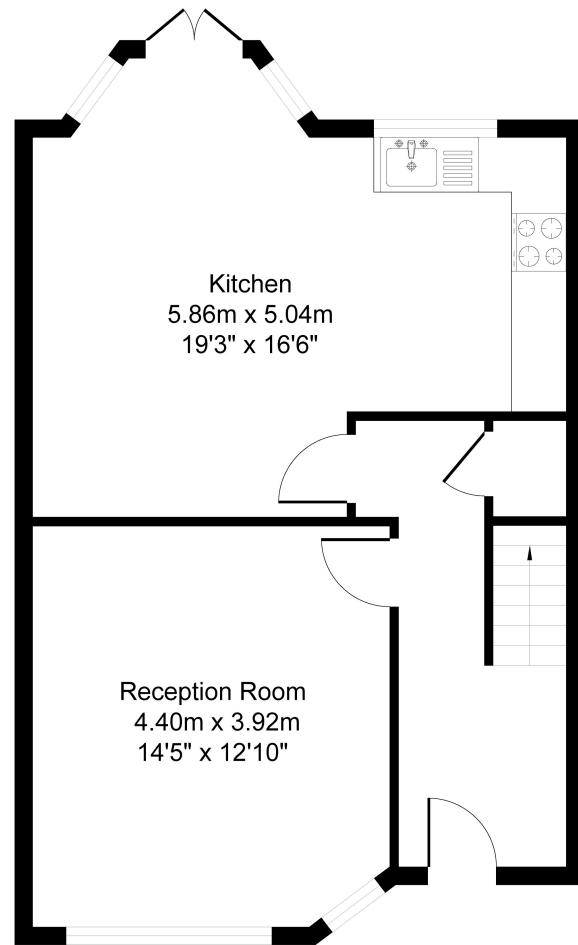
House
Double Glazing

Unfurnished Property
Two double bedrooms

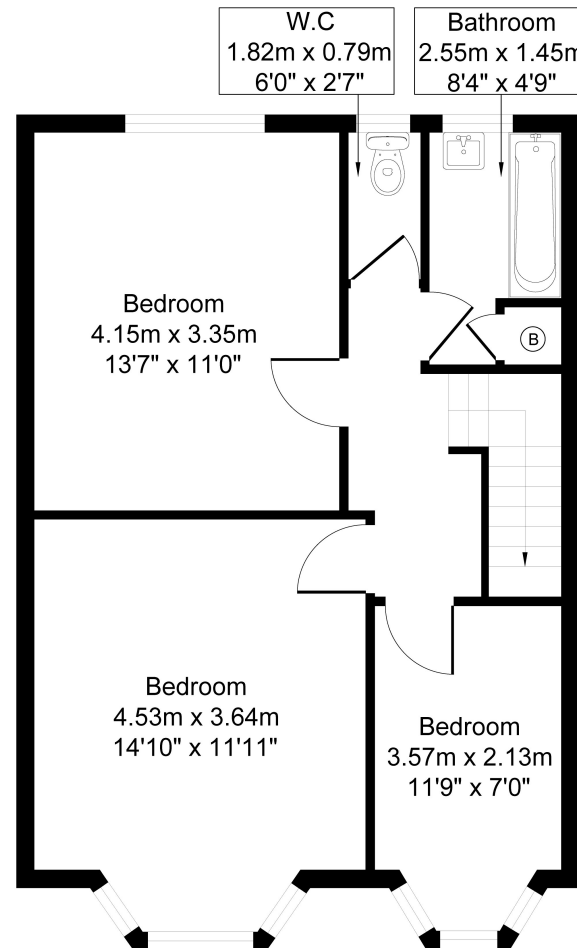
Gas central heating
Private garden

Three-bedroom mid terrace house with LARGE private garden. The property comprises two LARGE DOUBLE bedrooms, one single bedroom, modern bathroom with separate W.C and large open plan reception with fitted kitchen including dishwasher. Further benefits include gas central heating, part wood flooring and double glazing. Located within a short distance to Bruce Grove BR, Tottenham Hale underground and BR Stations with good access to central London via train or bus. Unfurnished. Available end of January.

44 Park View Rd N17 9AU



Ground Floor



First Floor

Approximate Gross Internal Area = 99.77 sq m /1073.99 sq ft
Illustration for identification purposes only, measurements are approximate, not to scale

