



## Eversley Crescent, TW7

£3,500,000

Dexters are delighted to introduce for sale, Ashton House School. Situated within a plot of circa 2,570 m<sup>2</sup> (27,700 ft<sup>2</sup>), the schoolhouse features two linked four-storey period buildings with an internal area of circa 1,030 m<sup>2</sup> (11,100 ft<sup>2</sup>), in addition there are a number of outbuildings including an adobe building creating a combined internal area of approximately 1,157 m<sup>2</sup> (12,463 ft<sup>2</sup>).

Ashton House School was an independent co-educational preparatory and nursery school for children aged roughly 3 to 11 years. It operated as a day school (no boarding) with mixed entry and a non-selective admissions policy.

The school officially closed on Friday 11th July 2025, currently within Use Class F1 the school has the potential for redevelopment covering a number of alternative uses, subject to securing the necessary planning consents.

Located within the London Borough of Hounslow in West London, Isleworth Train Station is within 665 metres providing direct trains to London Waterloo. Osterley Tube Station on the Piccadilly line is within 525 metres providing direct access to London Heathrow Airport and into central London.

### Tenure

50 Eversley Crescent - Leasehold HM Land Registry Title Number NGL139335 (999 years from 29 September 1858)

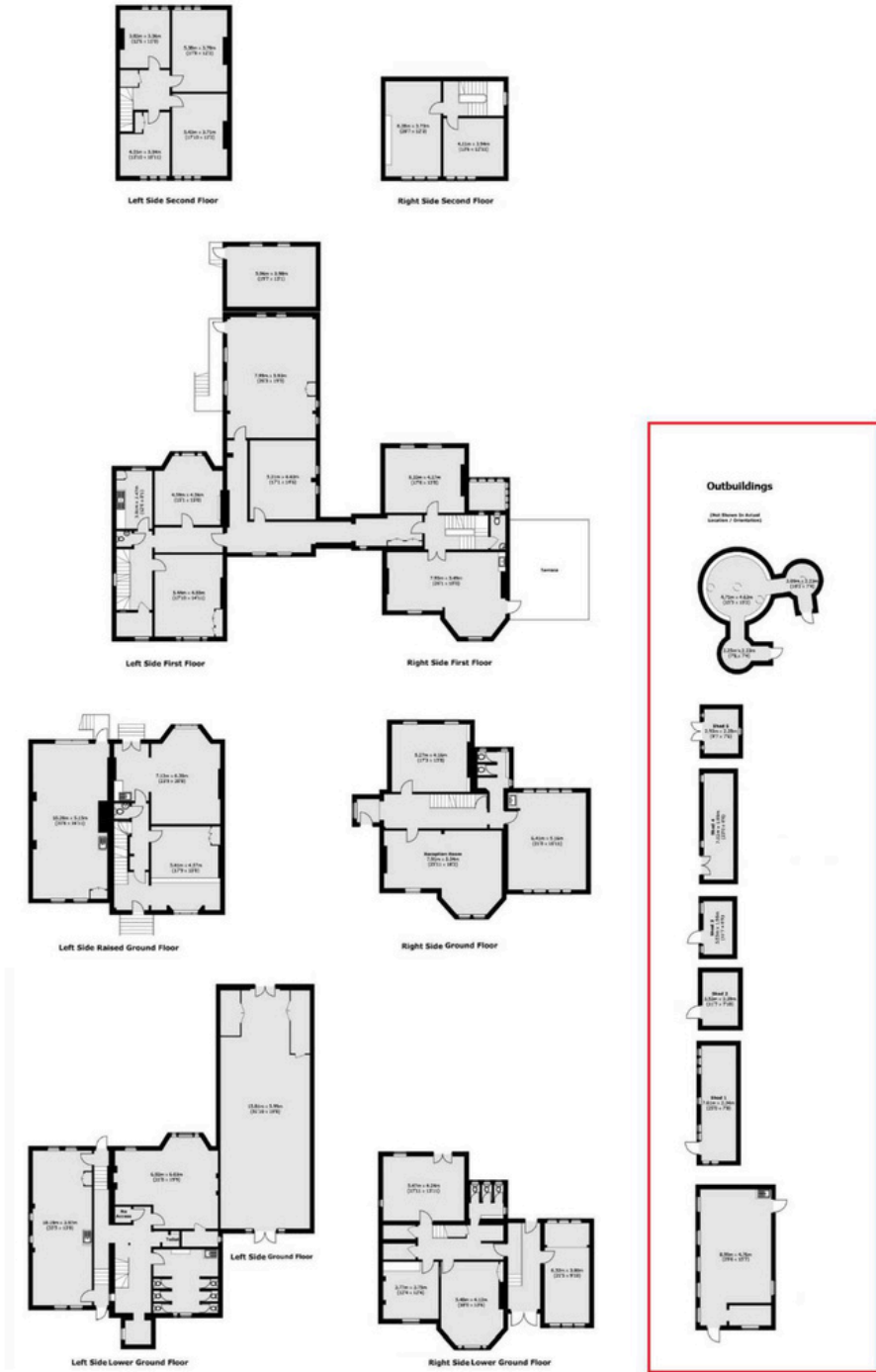
52 Eversley Crescent - Freehold HM Land Registry Title Number NGL86590

### Features

- Non-Active Independent School
- Use Class F1
- Redevelopment Potential (STPP)
- Plot area circa 2,570 m<sup>2</sup> (27,700 ft<sup>2</sup>)
- Internal area circa 1,157 m<sup>2</sup> (12,463 ft<sup>2</sup>)
- Vacant Possession

## Ashton House School, 50-52 Eversley Crescent, Isleworth TW7 4LW

### Total Floor Plan



Total area (approx.): 1031.5 sq. m (11,102.9 sq. ft)  
 Outbuildings (approx.): 126.4 sq. m (1,360.4 sq. ft)  
 Terrace area : 34.5 sq. m (371.3 sq. ft)  
 (Excluding External Area)



Registered office: Mayfair Showroom, 66 Grosvenor Street, London, W1K 3JL.  
 Dexters London Limited, Company Registration Number 04160511

dexters.co.uk

Property sales, lettings and management. Development and investment advisors. Specialist residential Chartered Surveyors.