



Chalcot Square, NW1

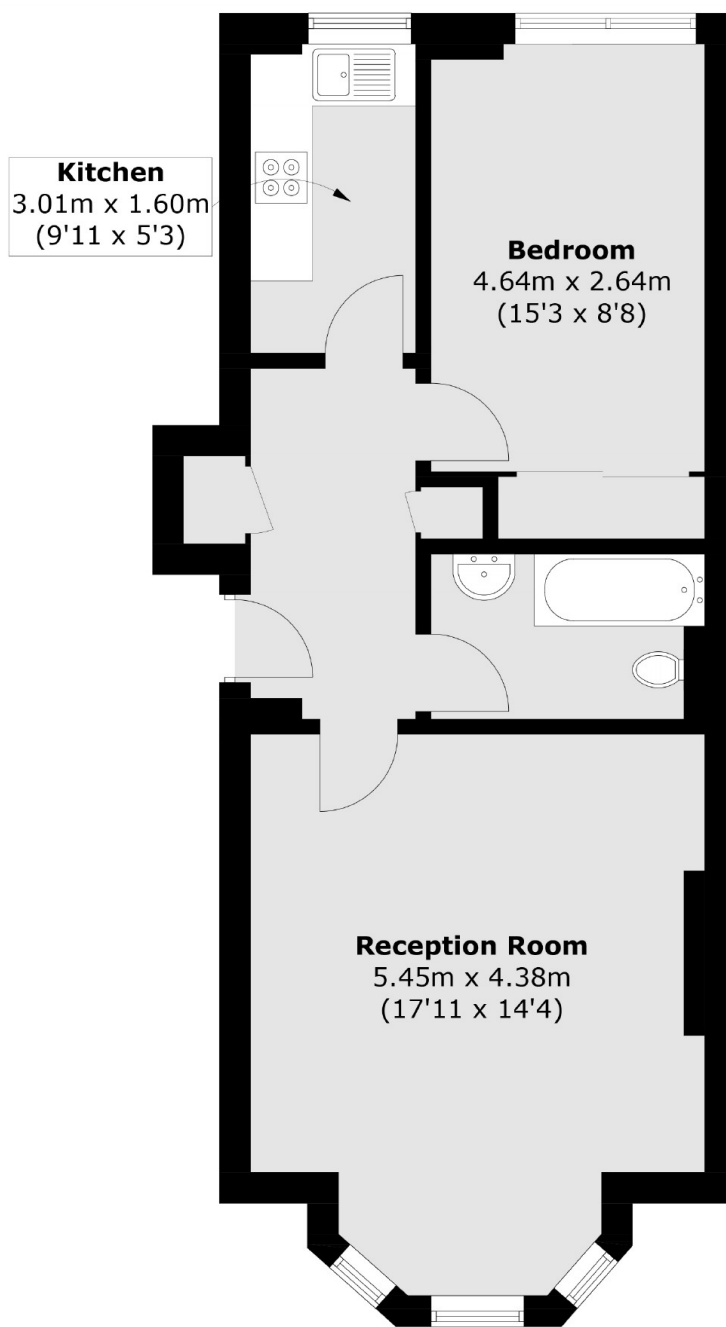
£550 Per week

A spacious one double bedroom apartment on the second floor of a purpose built block close to Regents Park. Bright reception room with high ceilings, separate kitchen, good size double bedroom with built in storage and bathroom with shower over bath. Ideal home for a single professional or a couple.

Features

Bright & Spacious
One Double Bedroom
Second Floor Apartment
Lift
Separate Kitchen
Excellent Location

Chalcot Square, London, NW1



Second Floor

Total area (approx.): 51.6 sq. m (555.4 sq. ft)