



Let **UK** Home

2 Bedrooms

Flat

Located in London

£4,800 Per Month



info@letukhome.co.uk

<https://www.letukhome.co.uk/>

01795 358 886



Sugar Quay, 1 Water Lane London

EC3R 6AP



Let UK Home are excited to offer this spectacular two bedroom apartment in the heart of Landmark Place situated in City of London, EC3R.

This property comprises a large bright open plan kitchen and living room with great views, two double bedrooms with fitted wardrobes (master en-suite), a large family sized bathroom and ample storage.

Residents of this exceptional development will have exclusive use of the gym, the spa, swimming pool, private cinema, sauna & steam room, and treatment room. Residents will also benefit from a concierge and an unrivalled selection of shops, bars, restaurants, and leisure facilities.

Tower Hill Station (Circle & District Lines) is within walking distance, and London Bridge Station (Jubilee & Northern Lines) is also easily accessible. Fast tube services run directly to key destinations including Liverpool Street, the City of London, Victoria, King's Cross and Oxford Street for seamless commuting across central London.

The apartment is surrounded by many universities, and the subway can quickly reach London City University, King's College London, and London School of Economics and Political Science.

This central spot is enveloped by London's most iconic landmarks: The Shard, Tower Bridge and St Paul's Cathedral sit close by. The area is packed with luxury hotels, fine dining restaurants, traditional bars and world-famous theatres. Daily

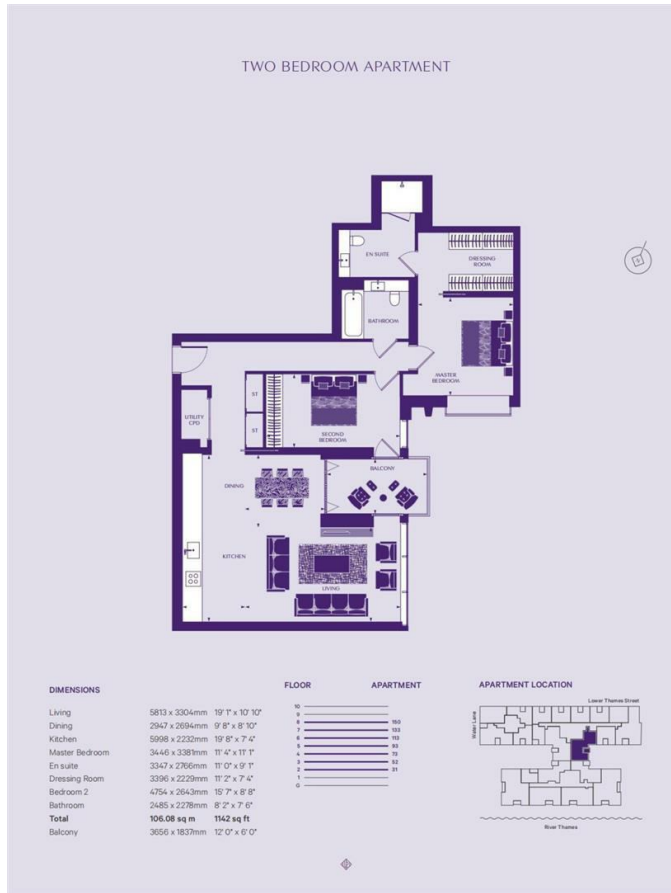
Sugar Quay, 1 Water Lane London

£4,800 Per Month



- 7th Floor
- Concierge Service & 24h Security
- Sauna & Steam Room
- Treatment Room
- Walk to Tube Stations
- Cinema & Game Room
- Swimming Pool & The Spa
- The Gym
- City of London
- EPC Rating: B





Let **UK** Home

3F 2 Eastbourne Terrace
 Paddington
 London
 W2 6LG

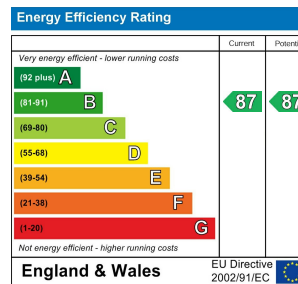
01795 358 886

info@letukhome.co.uk

Council Tax Band: G

Local Authority:

Agents Note: Whilst every care has been taken to prepare these particulars, they are for guidance purposes only. All measurements are approximate and are for general guidance purposes only and whilst every care has been taken to ensure their accuracy, they should not be relied upon and potential buyers/tenants are advised to recheck the measurements.



<https://www.letukhome.co.uk/>