



## Stamford Hill, N16

### £425,000

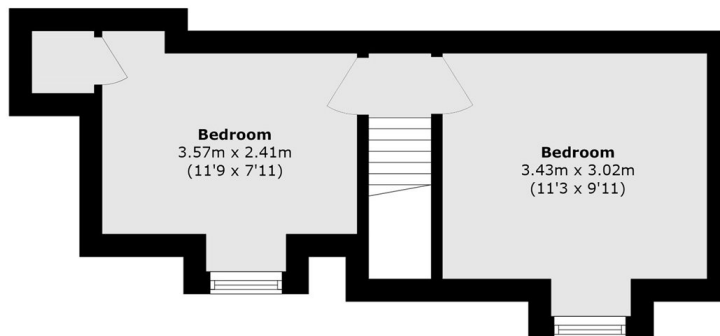
A two double bedroom split level apartment in the purpose built block, Malvern House. The property measures over 685 sq ft and has been renovated throughout by the current owner with separate kitchen, living room and separate W/C. It is being sold chain free.

Stoke Newington Station is a short walk away providing access to Liverpool Street and Seven Sisters Underground Station (Victoria Line). The property is situated near to the popular Stoke Newington Church Street with its boutique shops and restaurants. There are excellent transport links to The City and West End with numerous bus routes.

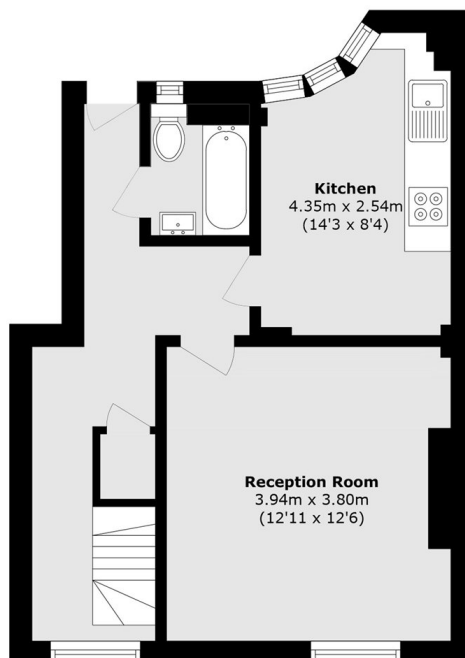
### Features

- Two Double Bedrooms
- Split Level
- Purpose Built
- Secure Entry
- Separate Kitchen
- Good Transport Links

# Stamford Hill, London, N16



**Fourth Floor**



**Third Floor**

Total area (approx.): 63.7 sq. m (685.6 sq. ft)