


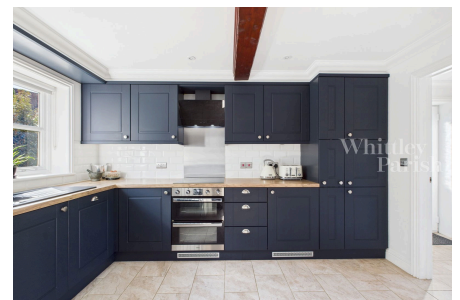
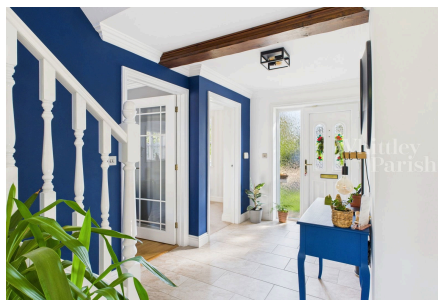


Diamond Close, Winfarthing

£485,000 - £510,000

 4  2  3



Are you looking for an extremely well-presented family home with four bedrooms and a double garage? And would you like to be in a village setting surrounded by rural countryside?

Key Features

- Guide price: £485,000 - £510,000
- Bright, airy and immaculately presented
- Three reception rooms
- Modern kitchen & utility room
- Family bathroom, en suite & ground floor cloakroom
- Off road parking & double garage
- EV charging point installed in 2023
- Village location with local pub

