

Property ref: 181290

## Belmont Court, Reading, RG1 1NS

£1,450 PCM

**HASLAM'S**  
Lettings



This ground floor two bedroom, apartment is located in the heart of Reading town centre and just minutes away from the mainline station. Reading Borough Council tax band C. Broadband/Mobile Info: Connections available. For an indication of specific speeds and supply of Broadband and Mobile, we advise applicants go to the Ofcom website Broadband and Mobile Coverage Checker.

### Available Now

- Two double bedrooms
- Fully fitted kitchen with appliances
- Bathroom with shower over the bath
- Secure allocated parking available for an additional £75 per month
- Gas central heating; EPC rating B
- Furnished; Managed by LANDLORD

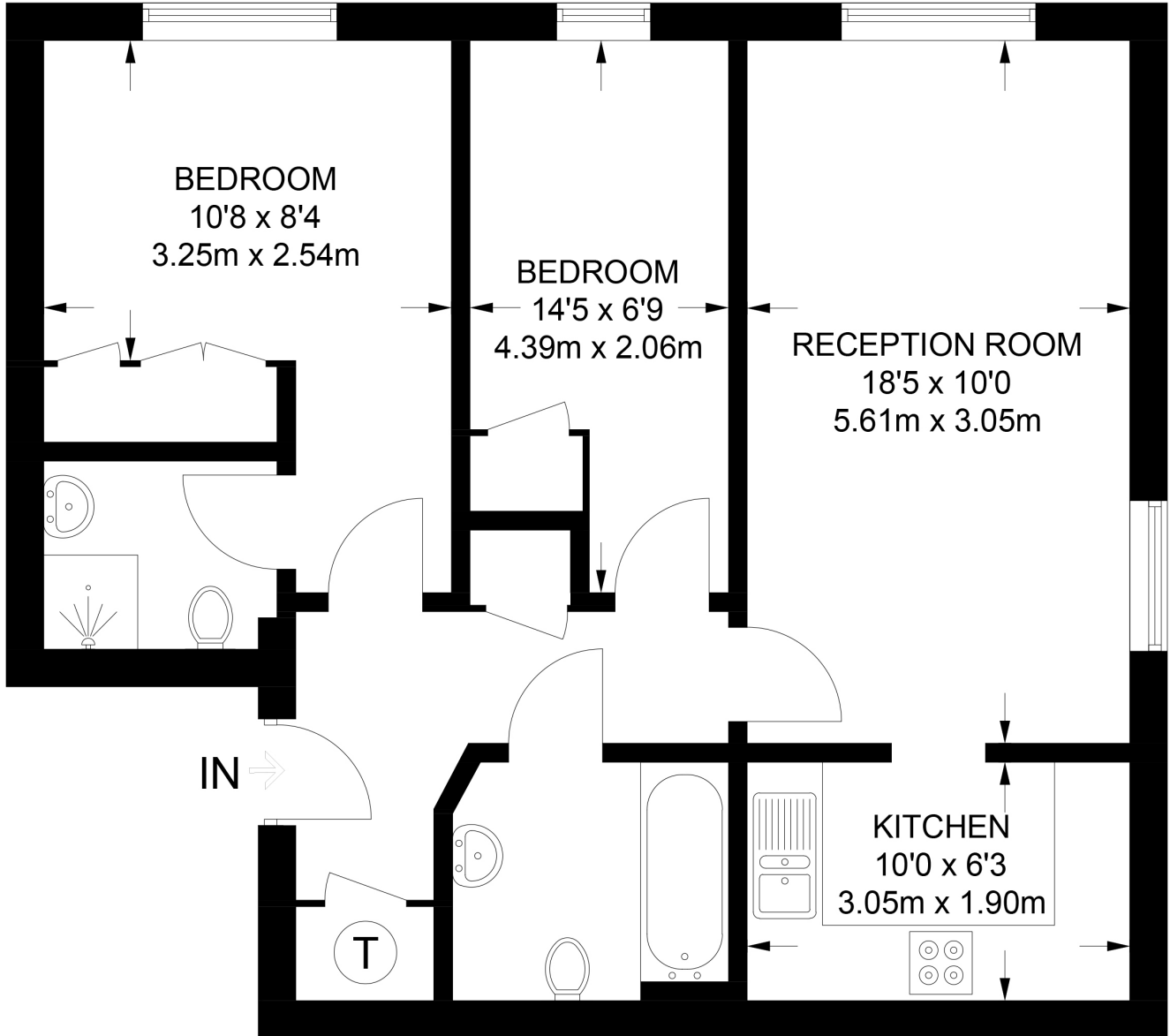
\*Fees For Assured Shorthold Tenancies: when you rent a property from us you will be required to pay a sum equivalent to one weeks' rent for a holding deposit. Upon successful application, this amount will be off set against your first months' rent. You will also be required to pay a security deposit equivalent to 5 weeks' rent which will be held and protected in line with Deposit legislation. For more information about our fees please visit: [www.haslams.net](http://www.haslams.net)  
Fees for all other tenancies (Non Housing Act Tenancies / Company Lets): when you rent a property from us we will charge you a one-off fee per property. This charge is the equivalent of 15 days of the monthly rental charge (+VAT) with a minimum fee of £450 (inc.VAT) up to a maximum of £650 (inc.VAT). Other fees may apply depending on your circumstances.

**0118 960 1055**

**[lettings@haslams.net](mailto:lettings@haslams.net) [www.haslams.net](http://www.haslams.net)**

**Haslams Estate Agents Ltd, 159 Friar Street, Reading, Berkshire, RG1 1HE**





## GROUND FLOOR

**APPROXIMATE GROSS INTERNAL AREA  
653 SQ FT / 60.7 SQ M**

This plan has been drawn for illustrative and identification purposes only.