



Ronalds Road, N5

£725,000

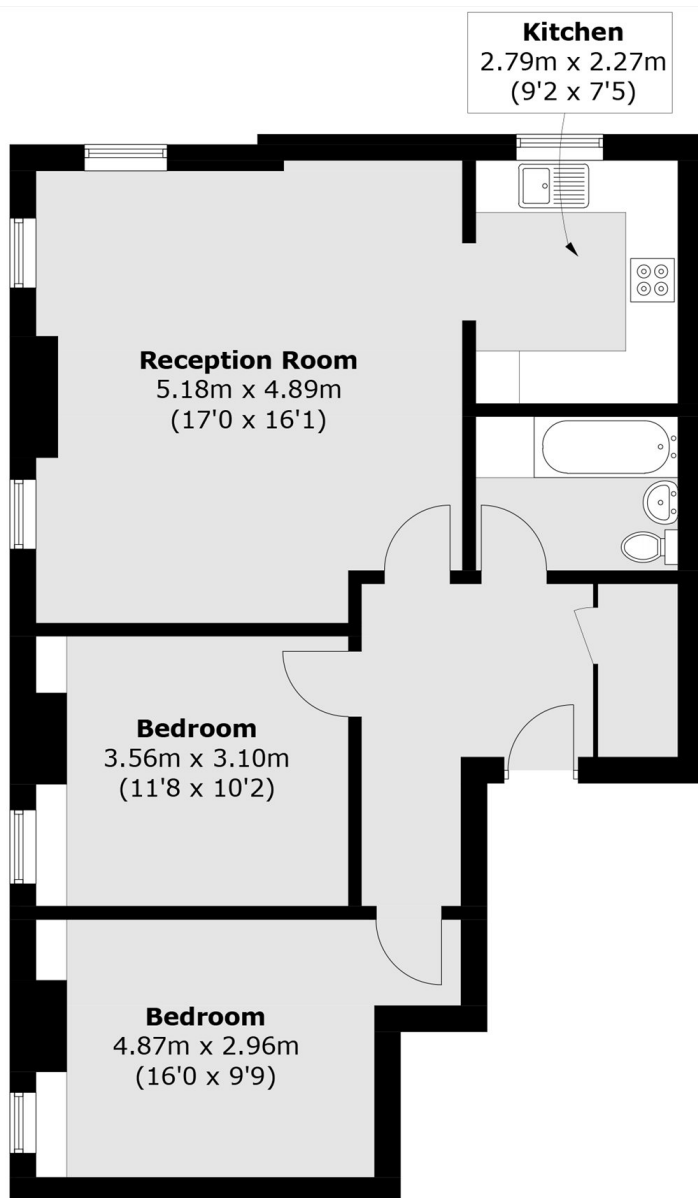
Found in a prime Highbury location, this substantial two bedroom home is set within a period flat development moments from Highbury Fields. There is a large living/dining room which leads onto a semi-open plan kitchen, two double bedrooms, one bathroom, and a large storage cupboard. The property is being sold chain free and with a share of the freehold.

Citadel Court is positioned on Ronalds Road, a quiet tree-lined street in the heart of Highbury. Ideally located between the open green spaces of Highbury Fields and the excellent transport links of Highbury & Islington Station (Victoria Line and Overground), the property is also within easy reach of Drayton Park Station, providing convenient access into The City. The vibrant amenities of Upper Street, with its wide selection of bars, restaurants, cafés and shops, are just a short walk away.

Features

- Two Bedrooms
- First Floor
- Lateral Apartment
- Share of Freehold
- Chain Free

Ronalds Road, London, N5



First Floor

Total area (approx.): 71.7 sq. m (771.8 sq. ft)