



**Connells**

Lincoln Court  
Borehamwood



## Property Description

Set within a peaceful cul-de-sac in a popular Borehamwood location, this extended four-bedroom semi-detached home offers superb living space ideal for families.

Lincoln Court benefits from quiet residential surroundings with well-kept streets and long-established homes, making it a particularly desirable setting for buyers seeking a calm, community-focused environment.

The property has been thoughtfully extended, providing generous ground-floor accommodation perfectly suited to modern family life. A bright and spacious layout flows beautifully throughout, complemented by a generous size rear garden ideal for children, entertaining or outdoor relaxation. An additional feature this home offers is a kitchenette on the top floor off the master bedroom, as well as an en-suite - ideal for young adults or guests!

Externally, Lincoln Court boasts a driveway for three cars. This home delivers both comfort and practicality in equal measure.

Located within easy reach of everyday amenities and highly regarded schools, the area offers excellent convenience for families. Just a short distance away are multiple local shops and food stores, including Costcutter and Borehamwood Pharmacy, all within 0.2 miles. The home also sits close to sought-after primary and secondary schools such as Saffron Green Primary (0.1 miles) and Yavneh College (0.7 miles), providing strong educational options within walking distance.

## Entrance Hall

Door to front aspect.

## Cloakroom

Wash hand basin, WC, tiled.

## Lounge

Window to rear aspect, door to garden, television point.

## Dining Room

Window to front aspect, radiator.

## Kitchen

Window to rear aspect, fitted kitchen with wall and base units, one and a half bowl sink, gas hob, electric oven, dishwasher, undercounter fridge, cookerhood.

## Utility Room

Washing machine, one bowl sink, radiator, mega flow boiler.

## First Floor

Window to front aspect.

## Bedroom 2

Window to rear aspect, fitted wardrobe, radiator.

## Bedroom 3

Window to front aspect, radiator.

## Bedroom 4

Window to rear aspect, WC, radiator.

## Bathroom

Window to side aspect, bath with mixer taps, wash hand basin, WC.

## Second Floor

### Bedroom 1

Window to rear aspect, radiator, fitted wardrobe.

### Ensuite

Shower cubicle, vanity unit with wash hand basin, WC.

### Kitchenette

One bowl sink, fridge.

## Outside

### Front Garden

Driveway for three cars.

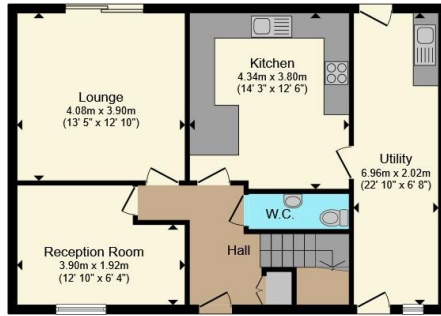
### Rear Garden

Patio and Laid to lawn.

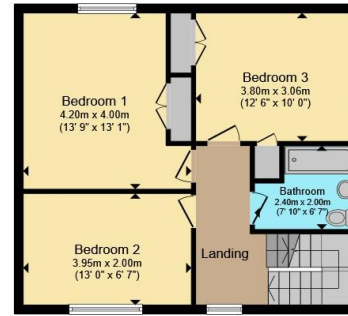




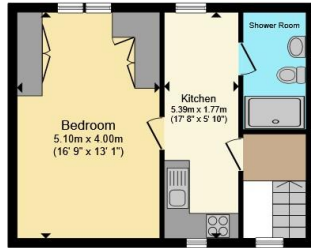




**Ground Floor**



**First Floor**



**Second Floor**

Total floor area 161.8 m<sup>2</sup> (1,742 sq.ft.) approx

This floor plan is for illustrative purposes only. It is not drawn to scale. Any measurements, floor areas (including any total floor area), openings and orientation are approximate. No details are guaranteed, they cannot be relied upon for any purpose and they do not form part of any agreement. No liability is taken for any error, omission or misstatement. A party must rely upon its own inspection(s). Powered by [www.propertybox.io](http://www.propertybox.io)



To view this property please contact Connells on

**T 020 8950 4404**  
**E [bushey@connells.co.uk](mailto:bushey@connells.co.uk)**

86 High Street  
 BUSHEY WD23 3HD

EPC Rating: C Council Tax  
 Band: D

Tenure: Freehold

**view this property online [connells.co.uk/Property/BUS307715](http://connells.co.uk/Property/BUS307715)**



1. MONEY LAUNDERING REGULATIONS Intending purchasers will be asked to produce identification documentation at a later stage and we would ask for your co-operation in order that there will be no delay in agreeing the sale. 2. These particulars do not constitute part or all of an offer or contract. 3. The measurements indicated are supplied for guidance only and as such must be considered incorrect. Potential buyers are advised to recheck measurements before committing to any expense. 4. We have not tested any apparatus, equipment, fixtures, fittings or services and it is in the buyers interest to check the working condition of any appliances.

Connells Residential is registered in England and Wales under company number 1489613, Registered Office is Cumbria House, 16-20 Hockliffe Street, Leighton Buzzard, Bedfordshire, LU7 1GN. VAT Registration Number is 500 2481 05.

**See all our properties at [www.connells.co.uk](http://www.connells.co.uk) | [www.rightmove.co.uk](http://www.rightmove.co.uk) | [www.zoopla.co.uk](http://www.zoopla.co.uk)**

Property Ref: BUS307715 - 0004