

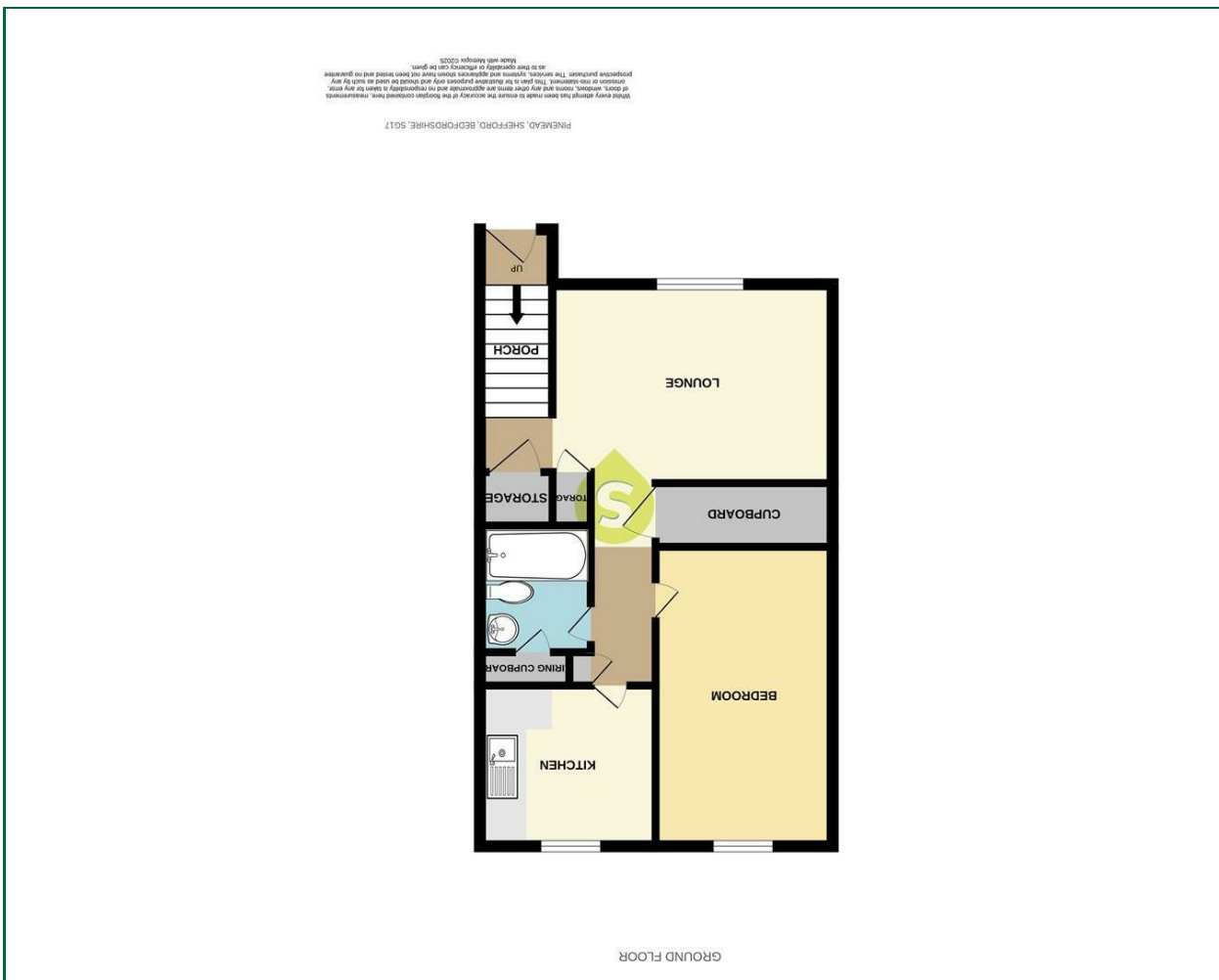


These particulars, whilst believed to be accurate are set out as a general outline only for guidance and do not constitute any part of an offer or contract. Intending purchasers should not rely on them as statements of representation of fact, but must satisfy themselves by inspection or otherwise as to their accuracy. No person in this firm's employment has the authority to make or give any representation or warranty in respect of the property.

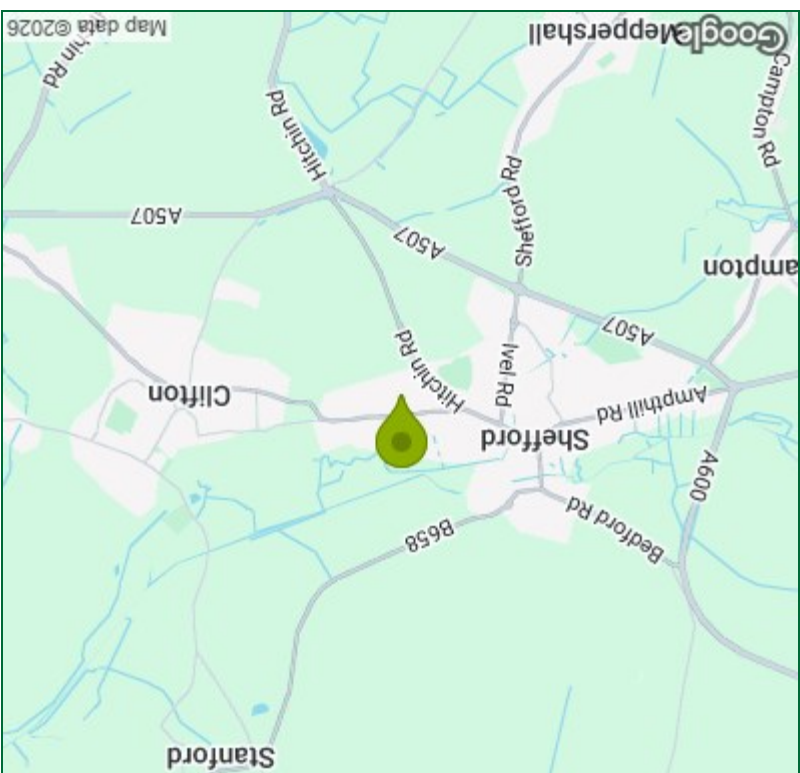
Viewing

Please contact our Shefford Office on 01462 814087

If you wish to arrange a viewing appointment for this property or require further information.

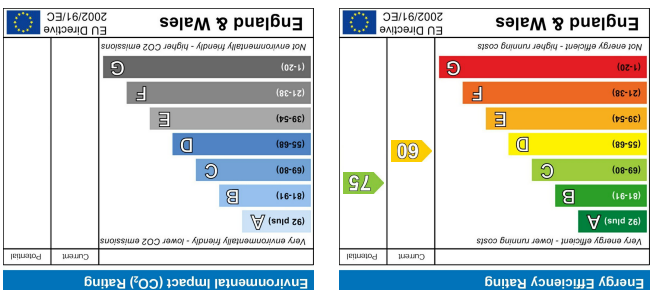


Floor Plan



Area Map

Energy Efficiency Graph



Pinemead,
Shefford | Bedfordshire
£110,000



Entrance Hall

Entrance door, stairs leading to first floor, small cupboard.

Lounge

17'8" x 9'9"

Window to front, radiator, two, large fitted cupboard.

Hallway

Large storage cupboard, small storage cupboard.

Bedroom One

14'8" x 8'5"

Window to rear, radiator, access to loft space.

Kitchen

8'7" x 7'10"

Fitted with a range of base and eye level units with roll top work surfaces, stainless steel sink unit, tiled splash back, electric cooker point, plumbing for washing machine, floor standing gas boiler, window to rear, radiator.

Bathroom

Suite comprising of panel enclosed bath with mixer tap and shower attachment, low level w.c, wash hand basin, part tiled walls, radiator, airing cupboard housing hot water tank.

Outside

Path to front door, outside brick build cupboard.

Agents Notes

Leasehold.

Lease term 125 years from 1993.

Ground Rent £TBC.

Service Charge £TBC.

Council tax band A.

