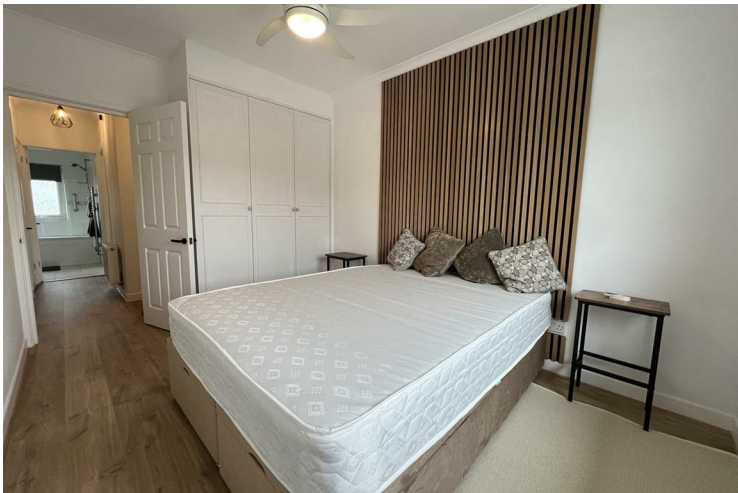




10 KINGS COURT EMBANKMENT ROAD

£1,250 Per

A waterside 2 bedroom apartment with parking and town location.



- 2 Bedrooms • Water views • Undercover Parking • Walking distance to town centre • Balcony

Full Description

Inside, you'll find an inviting entrance hall leading to an open-plan kitchen and living area, complete with modern fittings and patio doors that open onto a balcony with stunning estuary views.

The apartment also features two spacious bedrooms, a well fitted family bathroom, a separate WC, and a utility area. Recently updated to a high standard, the property boasts double glazing and gas central heating throughout. It's move-in ready now and the tenancy length is flexible to suit your needs.

Council Tax Band: E

Local Authority: South Hams District Council

Services: Mains electricity, gas, water and drainage. Gas fired central heating.

EPC: Band C

Viewings: Very strictly by appointment only

Letting - The property is available to rent on an Assured Shorthold Tenancy. Rent £1250 per calendar month.

Unfortunately due to the headlease, pets cannot be considered at this property.

All deposits for a property let by Charles Head are held in an approved Tenancy Deposit Scheme. Usual references required.

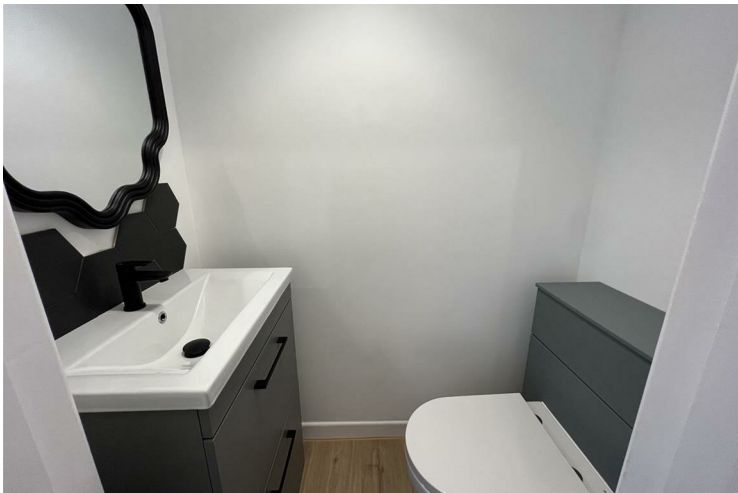
Viewings strictly by appointment with Charles Head.

Holding Deposit And Tenant Fees - This is to reserve a property. The Holding Deposit (equivalent of one weeks rent) will be withheld if any relevant person (including any guarantor(s) withdraw from the tenancy, fail a Right-to Rent check, provide materially significant false information, or fail to sign their tenancy agreement (and / or Deed of Guarantee) within 15 calendar days (or other Deadline for Agreement as mutually agreed in writing). For full details of all permitted Tenant Fees payable when renting a property through Charles Head please refer to the Scale of Tenant Fees available on Charles Head website, office or on request. For further clarification before arranging a viewing please contact the lettings office dealing with the property.


IMPORTANT NOTICE: The information provided is for general guidance purposes and is issued in good faith to offer an overview of the property. These details do not form part of any offer or contract. 1. Descriptions, measurements, and other details are not guaranteed to be accurate and should not be relied upon as factual statements. Tenants must independently verify all information and satisfy themselves. Measurements are approximate and may require confirmation. 2. The condition of the property and its services has not been checked, and no warranties or assurances can be provided by Charles Head or their representatives 3. Photographs included in the listing are for illustrative purposes only and may not depict all parts of the property or its current state. Items shown are not necessarily included in the sale or tenancy unless expressly stated 4. Any mention of modifications, planning permissions, or potential uses of the property does not imply that necessary permissions have been obtained. Interested parties should conduct their own investigations 5. Property descriptions are



subjective and reflect opinions intended to give a general impression rather than detailed or definitive statements. For any aspects of particular importance, clarification should be sought before arranging a viewing. Prospective buyers or tenants are strongly advised to confirm availability and book an appointment to view the property before traveling.





Energy Efficiency Rating		
	Current	Potential
<i>Very energy efficient - lower running costs</i>		
(92 plus) A		
(81-91) B		
(69-80) C	79	79
(55-68) D		
(39-54) E		
(21-38) F		
(1-20) G		
<i>Not energy efficient - higher running costs</i>		
England & Wales	EU Directive 2002/91/EC 	

EPC Rating: C Council Tax Band: E

Agents Note: Whilst every care has been taken to prepare these particulars, they are for guidance purposes only. All measurements are approximate and are for general guidance purposes only and whilst every care has been taken to ensure their accuracy, they should not be relied upon and potential buyers/tenants are advised to recheck the measurements

Kingsbridge Lettings
 58 Fore Street
 Kingsbridge
 Devon
 UK
 TQ7 1NY

01548 852352
 lettings@charleshead.co.uk
<https://charleshead.co.uk/>

