



Flat 2, 39 Bramham Gardens, London | Earls Court | London | SW5 0JE

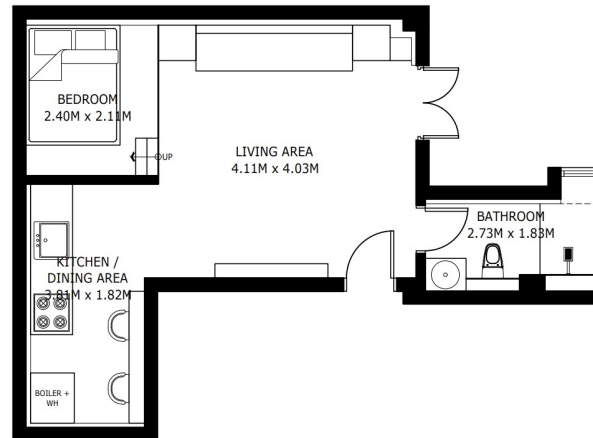
£2,500 Per Month

SÉJOUR

**Flat 2, 39 Bramham Gardens,
London | Earls Court
London | SW5 0JE**

Welcome to Bramham Gardens, an exceptional recently refurbished development curated by award-winning interior designers, offering beautifully considered living in one of London's most prestigious residential settings.

- Recently refurbished apartment
- Fully furnished to a high specification
- Exclusive access to private garden square
- Lower ground floor position
- Private outdoor space
- Excellent built-in storage throughout



UNIT 2

GROSS INTERNAL AREA
31.30 SQ.M. / 336.91 SQ.FT.

*SIZES AND DIMENSIONS ARE APPROXIMATE, ACTUAL MAY VARY.

Energy Efficiency Rating		Current	Potential
<i>Very energy efficient - lower running costs</i>			
(92 plus) A			
(81-91) B			
(69-80) C		77	83
(55-68) D			
(39-54) E			
(21-38) F			
(1-20) G			
<i>Not energy efficient - higher running costs</i>			
England & Wales		EU Directive 2002/91/EC	

**Council Tax Band C
EPC Rating C**

**10 Cromwell Pl
South Kensington
London
SW7 2JN**

**020 3865 0611
lettings@cityrelay.com**