



Colney Hatch Lane, N10

£2,000 Per calendar month

A newly refurbished large two double bedroom apartment with off street parking in central Muswell Hill. The property boasts a spacious living room, separate kitchen, high ceilings and two generously sized bedrooms.

Excellent location just off Muswell Hill Broadway surrounded by a variety of popular local restaurants, shops and excellent bus links to central London.

Features

- Two Double bedrooms
- Period Conversion
- Off Street Parking
- Unfurnished
- Spacious Rooms
- Period Features

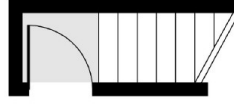


Colney Hatch Lane, N10

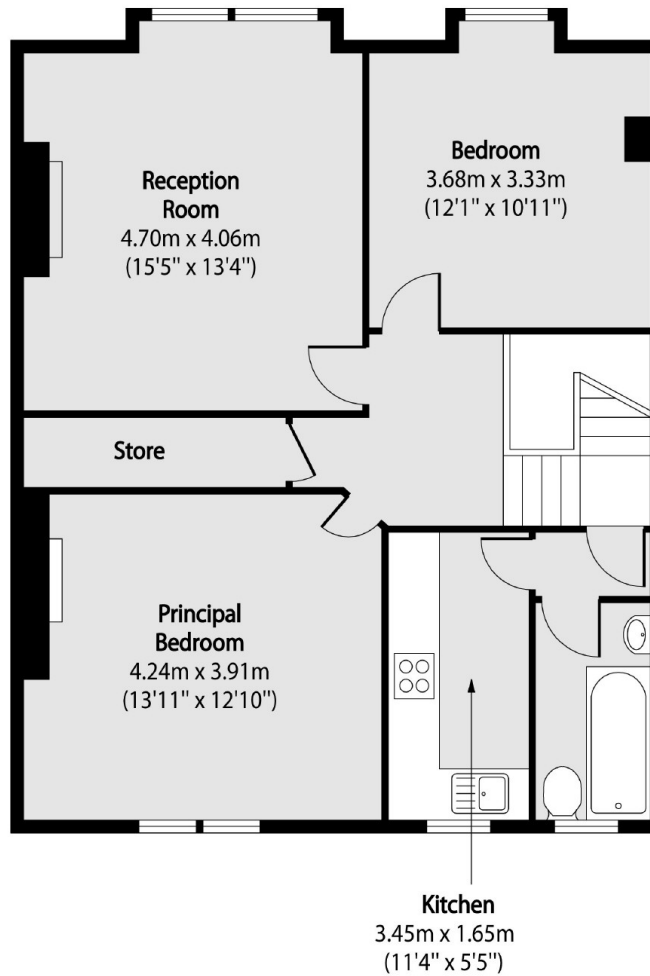


Colney Hatch Lane,
London, N10

First Floor



Second Floor



Total area (approx): 69.49 sq m (748 sq. ft)