



Woods Mews, W1K

£950 Per week

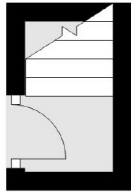
A one bedroom apartment with private balcony in a peaceful Mayfair Mews. This second floor flat has a large reception leading onto a private balcony toward the rear of the building. The double bedroom comes with ample fitted storage.

Woods Mews is set in a quiet residential street located to the east of Hyde Park and to the north of Piccadilly.

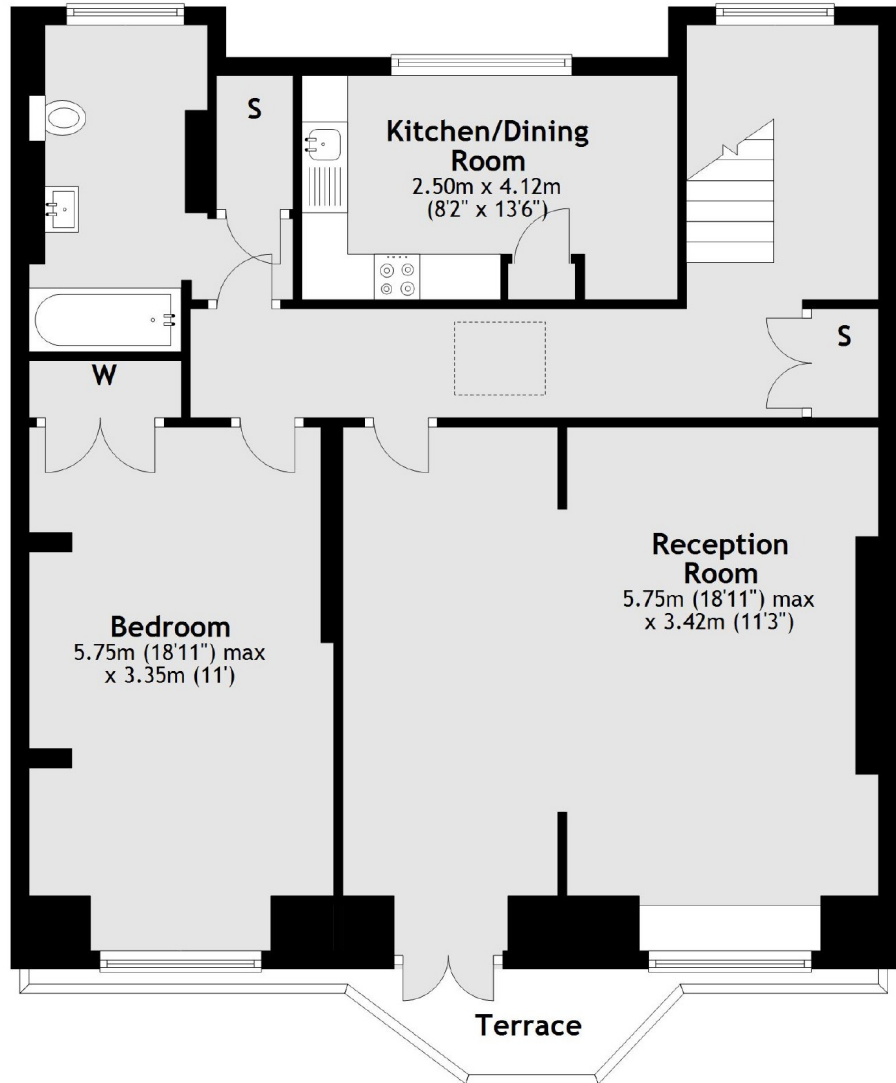
Features

- Spacious Double Bedroom
- Recently Renovated
- Quiet Mews
- Private Balcony
- Large Reception
- Secure Entry Systems

Woods Mews, London, W1K



Second Floor



Third Floor

Total area: approx. 93.7 sq. metres (1008.2 sq. feet)