



Victoria Bolt
estate agents POWERED BY **exp** UK

Ford Close, Ivybridge

Offers Over £200,000

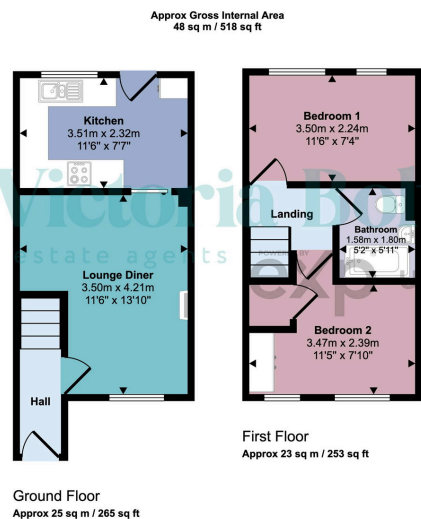
🛏️ 2 🚿 1 🚗 1



- Two double bedrooms
- Recently fitted modern kitchen
- Private rear garden
- Allocated parking space
- Popular Ivybridge location
- Ideal first-time buy
- Integrated appliances
- Rear access to footpath
- Well-presented throughout
- Close to schools, shops and transport links



Great first home in a popular Ivybridge spot, this two-bedroom property offers two double bedrooms, a modern kitchen with integrated appliances, a private garden with rear access and allocated parking. Well-positioned close to local shops, Woodlands Primary School and Spinney Park, it's a really practical and affordable way to get onto the ladder.



This floorplan is only for illustrative purposes and is not to scale. Measurements of rooms, doors, windows, and any items are approximate and no responsibility is taken for any error, omission or mis-statement. Icons of items such as bathroom suites are representations only and may not look like the real items. Made with Made Snappy 360.

