



barnard marcus

Lime Grove, New Malden, KT3 3TP

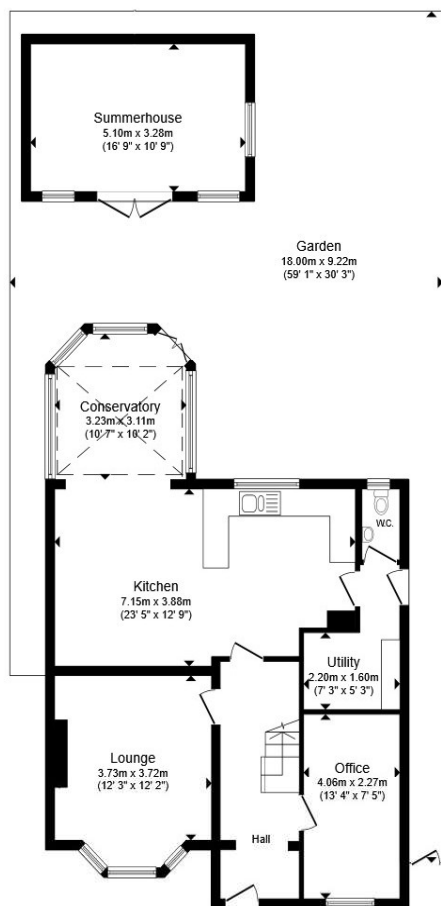


welcome to

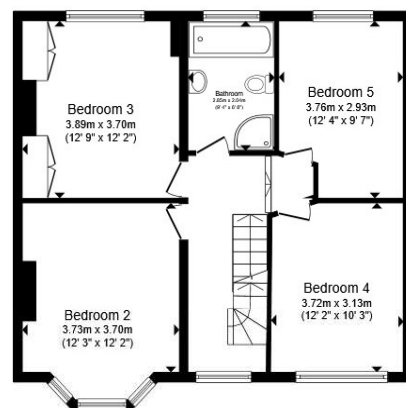
Lime Grove, New Malden

We're delighted to offer this substantial beautifully decorated, five double bedroom, semi-detached family home. Situated in the heart of The Groves region of New Malden, this property offers 2184 SqFt of lavishly appointed accommodation arranged over three floors.

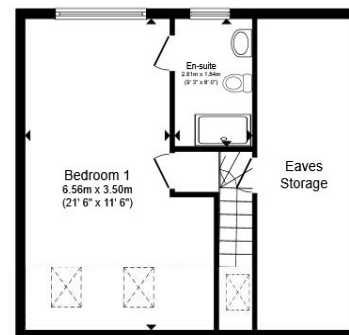




Ground Floor



First Floor



Second Floor



Total floor area 218.8 m² (2,355 sq.ft.) approx

This floor plan is for illustrative purposes only. It is not drawn to scale. Any measurements, floor areas (including any total floor area), openings and orientation are approximate. No details are guaranteed, they cannot be relied upon for any purpose and they do not form part of any agreement. No liability is taken for any error, omission or misstatement. A party must rely upon its own inspection(s). Powered by www.propertybox.io



Set behind a generous frontage providing off-street parking for several vehicles, the property opens into a spacious enclosed porch & welcoming entrance hall, complete with understairs storage & a newly created home office positioned to the front of the house.

Beyond this, the accommodation flows into a spacious bay-fronted lounge, while to the rear the property opens up to a superb open-plan kitchen, reception and dining area, creating a bright and versatile heart of the home. Flooded with natural light, this impressive entertaining space enjoys a delightful outlook over the beautiful rear garden.

Further benefits include side access, a ground floor WC & a separate utility room. The fully fitted kitchen also features a breakfast bar & enjoys the continuity of hardwood flooring flowing through from the entrance hall.

To the first floor, there are four substantial double bedrooms, all tastefully decorated, together with a spacious family bathroom complete with both a separate shower and bath. Occupying the top floor is a generous principal bedroom with eaves storage & the added benefit of an ensuite bathroom.

Outside, a substantial decked & heated patio provides the ideal setting for dining and relaxing throughout the seasons, while a large outbuilding to the rear adds further versatility.

In essence this property offers light, bright accommodation & generous room dimensions with a high quality of finish throughout that can only be appreciated through viewing.

welcome to

Lime Grove, New Malden

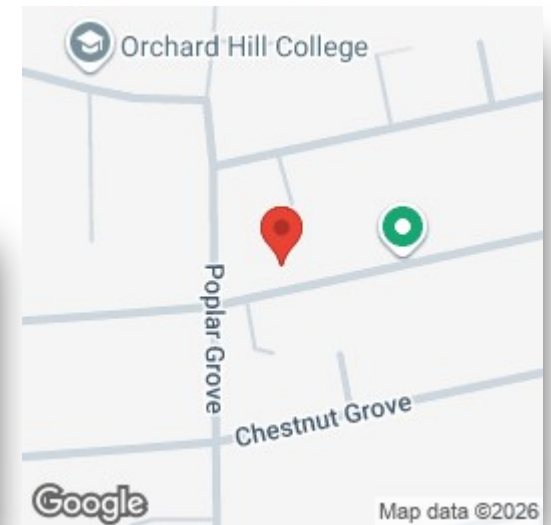
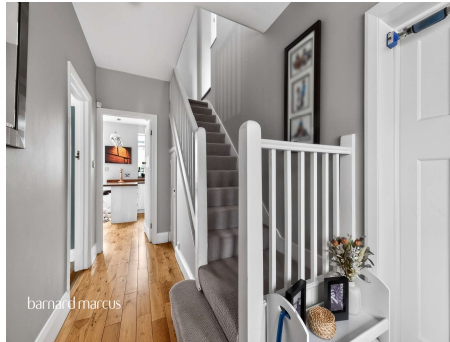
- Five Double Bedrooms
- Open Plan Kitchen / Diner
- Home Office Space
- Utility Room
- En-Suite to Master Bedroom
- Well-Maintained Rear Garden
- Large Block-Paved Driveway with Side Access
- 0.3 Miles to New Malden Train Station

Tenure: Freehold EPC Rating: C

Council Tax Band: E

guide price

£1,350,000



Please note the marker reflects the postcode not the actual property

view this property online [barnardmarcus.co.uk/Property/NML107788](https://www.barnardmarcus.co.uk/Property/NML107788)



Property Ref:
NML107788 - 0003

1. MONEY LAUNDERING REGULATIONS Intending purchasers will be asked to produce identification documentation at a later stage and we would ask for your co-operation in order that there is no delay in agreeing the sale. 2. These particulars do not constitute part or all of an offer or contract. 3. The measurements indicated are supplied for guidance only and as such must be considered incorrect. Potential buyers are advised to recheck measurements before committing to any expense. 4. We have not tested any apparatus, equipment, fixtures or services and it is in the buyers interest to check the working condition of any appliances. 5. Where an EPC, or a Home Report (Scotland only) is held for this property, it is available for inspection at the branch by appointment. If you require a printed version of a Home Report, you will need to pay a reasonable production charge reflecting printing and other costs. 6. We are not able to offer an opinion either written or verbal on the content of these reports and this must be obtained from your legal representative. 7. Whilst we take care in preparing these reports, a buyer should ensure that his/her legal representative confirms as soon as possible all matters relating to title including the extent and boundaries of the property and other important matters before exchange of contracts.

Barnard Marcus is a trading name of Sequence (UK) Limited which is registered in England and Wales under company number 4268443, Registered Office is Cumbria House, 16-20 Hockliffe Street, Leighton Buzzard, Bedfordshire, LU7 1GN. VAT Registration Number is 500 2481 05.



barnard marcus



020 8942 9211



NewMalden@barnardmarcus.co.uk



46-48 High Street, NEW MALDEN, Surrey, KT3 4EZ



[barnardmarcus.co.uk](https://www.barnardmarcus.co.uk)