



Holland Park Gardens, W14

£775,000



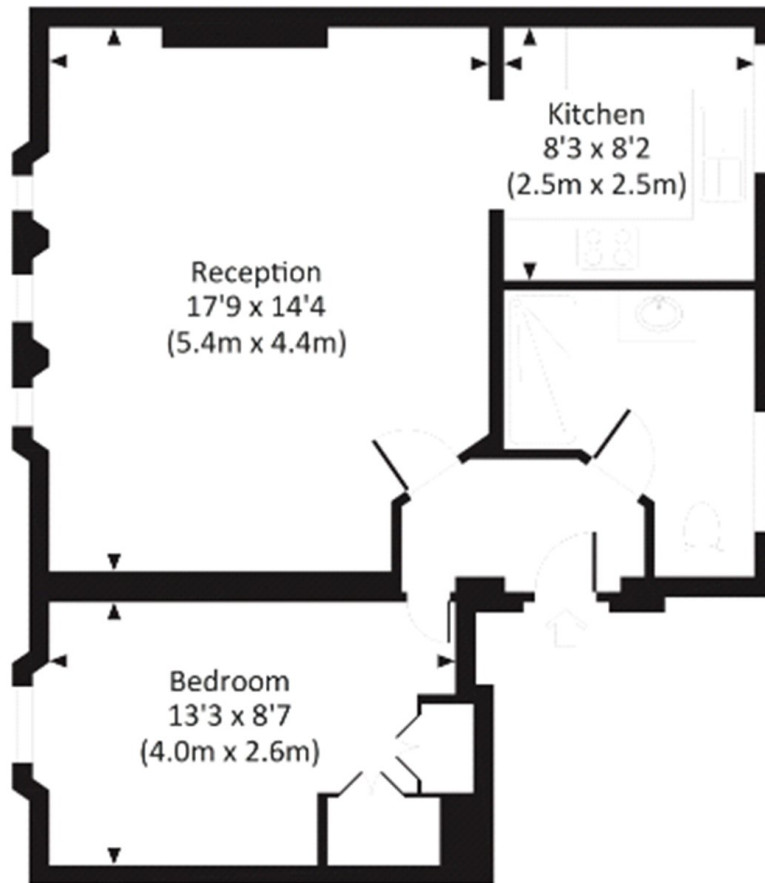
- Beautifully Presented
- Natural Light

- High Ceilings
- Second Floor

- One Bedroom
- Period Property

HOLLAND PARK GARDENS, W14

Approx. gross internal area
550 Sq.Ft. / 51.1 Sq.M.



SECOND FLOOR



All measurements have been made in accordance with BS5 Code of Measuring Practice which are approximate only and only for illustrative purposes. For the avoidance of doubt, these dimensions shall not be taken as any reliance on these measurements. © 2020 www.dorlingparsons.com 020 7605 6890

Marsh & Parsons Holland Park

57 Norland Square, London,
W11 4QJ
020 7605 6890

We aim to make our particulars both accurate and reliable. However, they are not guaranteed; nor do they form part of an offer or contract. If you require clarification on any points then please contact us, especially if you're traveling some distance to view. Please note that appliances and heating systems have not been tested and therefore no warranties can be given as to their good working order.